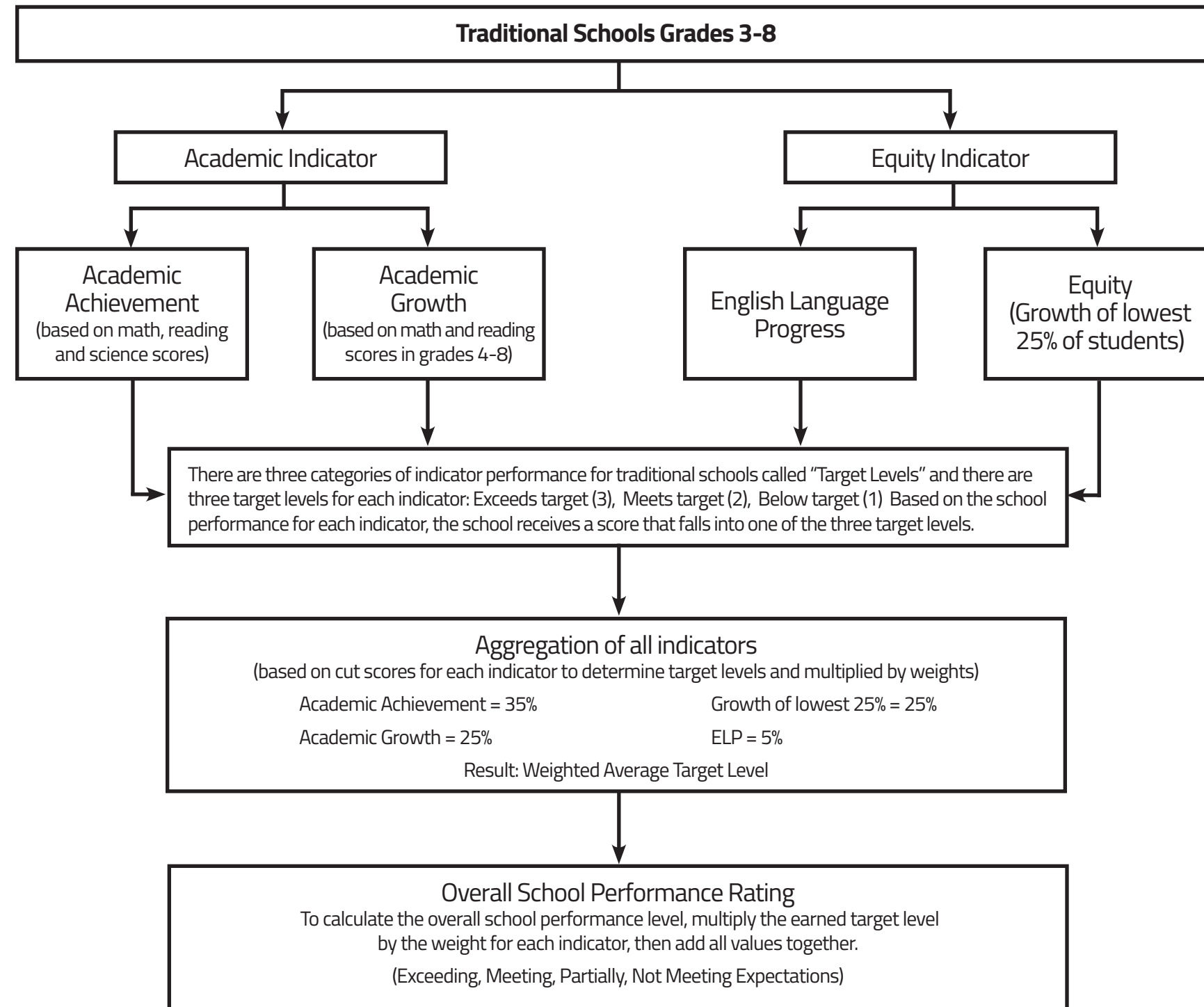
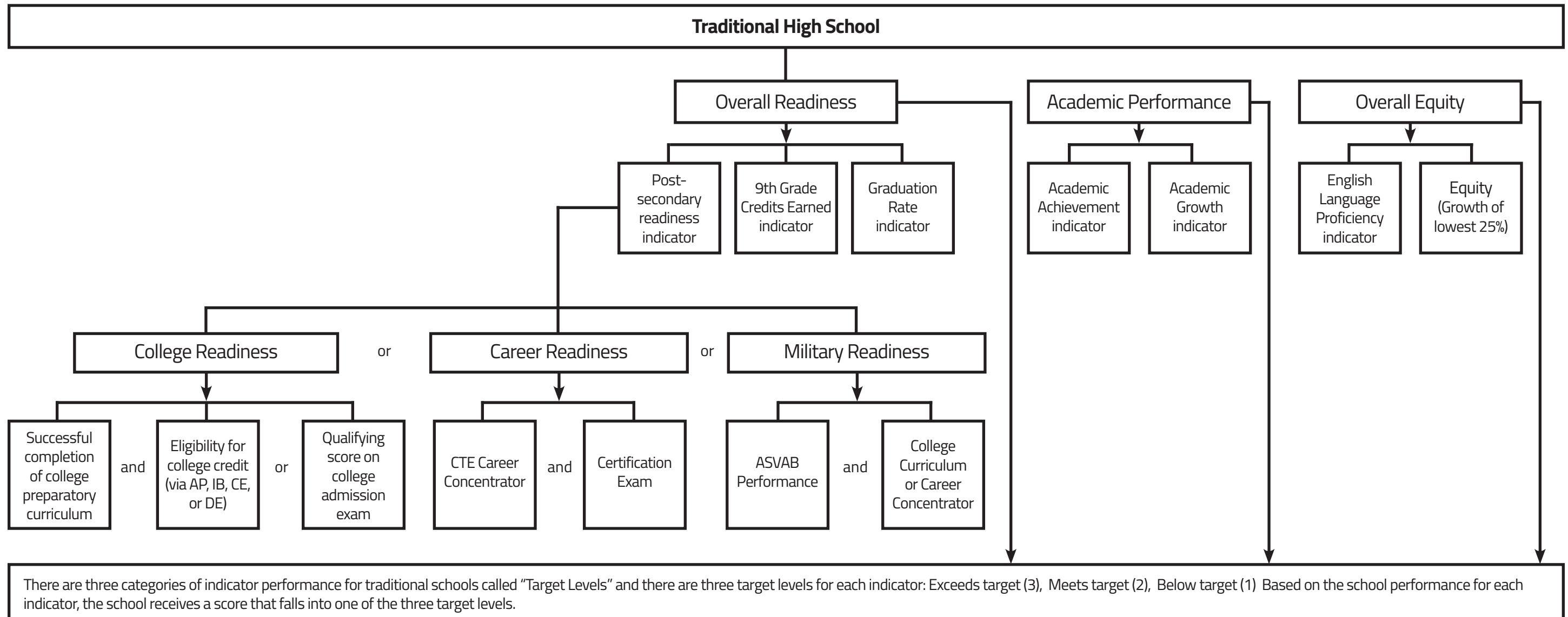




### Wyoming Accountability in Education Act (WAEA)



## Wyoming Accountability in Education Act (WAEA)



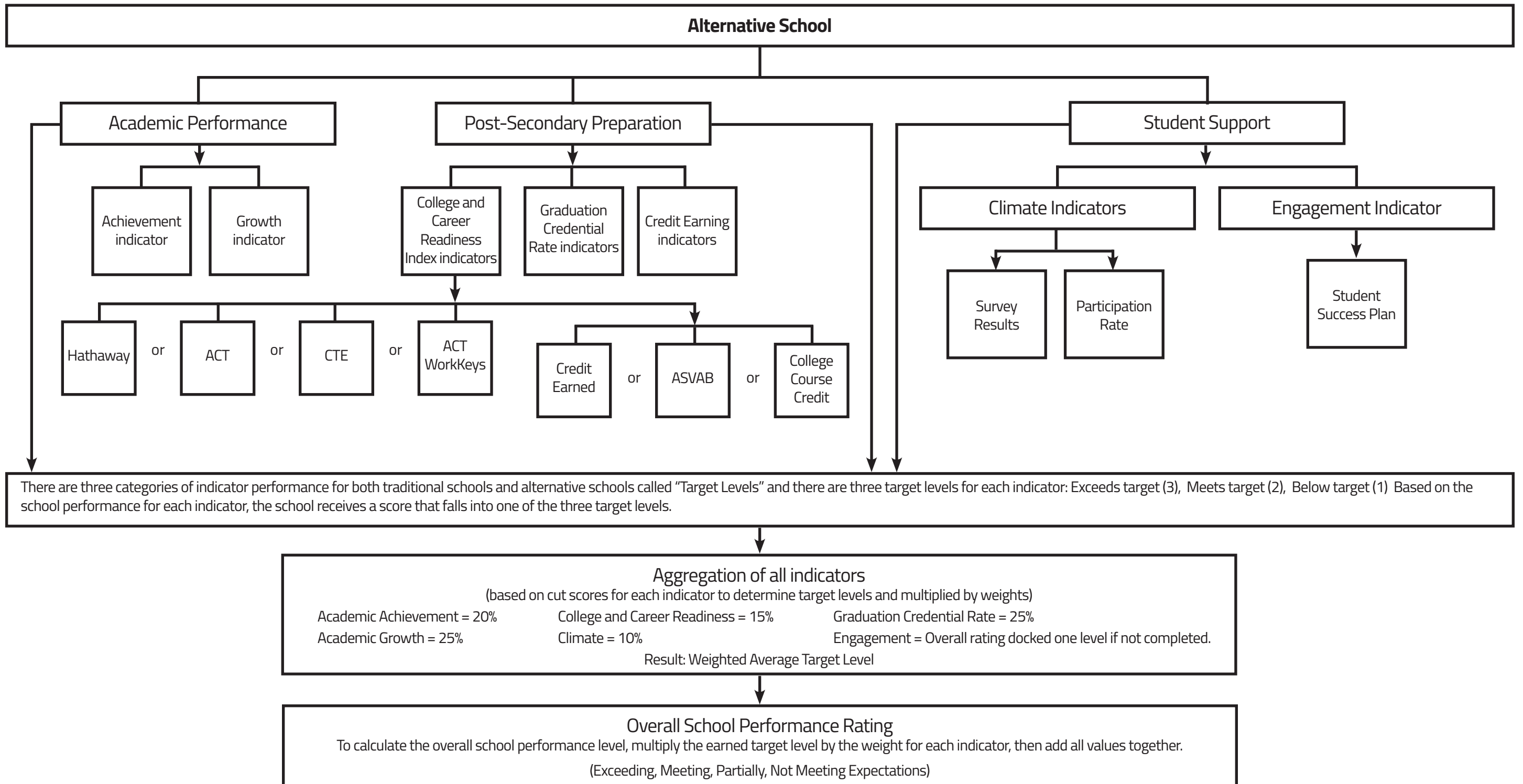
**Aggregation of all indicators**  
 (based on cut scores for each indicator to determine target levels and multiplied by weights)

Academic Achievement = 20%	Growth of lowest 25% = 15%	Graduation Rate = 20%	Academic Growth = 20%
ELP = 5%	Credits Earned = 5%	Post-Secondary Readiness = 15%	

Result: Weighted Average Target Level

**Overall School Performance Rating**  
 To calculate the overall school performance level, multiply the earned target level by the weight for each indicator, then add all values together.  
 (Exceeding, Meeting, Partially, Not Meeting Expectations)

## Wyoming Accountability in Education Act (WAEA)



To calculate the overall school performance level, multiply the earned Indicator target level by the weight for each indicator, then add all values together.

Indicator Target levels:

- Exceeds target = 3
- Meets target = 2
- Below target = 1

Indicator	Grades 3-8	Traditional HS	Alternative HS
Achievement	35%	20%	20%
Growth	35%	20%	25%
Equity	25%	15%	N/A
ELP	5%	5%	N/A
Grad Rate	N/A	20%	25%
Credits Earned	N/A	5%	5%
PSR/CCR	N/A	15%	15%
Climate	N/A	N/A	10%

## Aggregation Example

Indicator	Earned Target	Traditional HS	Indicator Value
Achievement	2	0.20	0.40
Growth	3	0.20	0.60
Equity	3	0.15	0.45
ELP	1	0.05	0.05
Grad Rate	2	0.20	0.40
Credits Earned	3	0.05	0.15
PSR/CCR	2	0.15	0.30
TOTAL overall school performance level:			2.35
Weighted Average Target Level Cut-Scores	Grades 3–8	Traditional HS	Alternative HS
Exceeding Expectations	2.6	2.5	2.3
Meeting Expectations	1.8	1.8	1.7
Partially Meeting Expectations	1.4	1.4	1.4