

# Wyoming Department of Education

## At-Risk Determinations for the Wyoming Funding Model

August 2020

### Statute, Rules & Regulations, and Definitions (to accompany At-Risk determination flowcharts)

- At-Risk Students, School Foundation Program, Statute and Rules and Regulations
  - o Wyoming Statute 21-13-309(m)(v)(A):
    - At-risk students, for purposes of model computations, shall include students within a school who are eligible for participation in the free and reduced price lunch program under the national school lunch program established by 42 U.S.C. 1751 et seq., who are identified as limited English proficiency in accordance with rules and regulations of the department of education or who are mobile students as defined by department rule and regulation and enrolled in grades six (6) through twelve (12) for the applicable school year. A student shall be counted only once for purposes of computing school at-risk student populations even though that student may simultaneously be eligible to participate in the free and reduced price lunch program, in programs serving students with limited English proficiency or is defined as a mobile student.
  - o Wyoming Department of Education Chapter 8 RULES AND REGULATIONS FOR THE SCHOOL FOUNDATION PROGRAM 03-07-2011:
    - Section 17. At-Risk Data Used for the Funding Model.
      - The data constituting a district's at-risk count shall be the unduplicated count of ELL students, FRL students and mobile students.
    - Section 4. Definitions.
      - (j) English Language Learner (ELL) Student. For purposes of calculating the funding model at-risk count, any student on October 1 who has been identified as an ELL or former ELL in Year 1 or Year 2 Monitor Status in compliance with required identification criteria presented in a format specified by the Department.
- Snapshot Date
  - o District WDE684 submissions consist of records for all students enrolled on a specific "snapshot" date; October 1st in the Fall, for example.
- District Fall and Spring Student Data Submissions to the WDE
  - o Currently refers to the WDE684 data collection (WISE Certified Teacher / Course / Student data) in the Fall with an October 1st snapshot date and in the Spring with an accountability snapshot date set by the Department.
- Enrolled/Enrollment
  - o A student's primary (base, or non-concurrent) enrollment in any grade KG-12 at a Wyoming public school, as reported by a district to the WDE on a specified snapshot date.
- Student's School Enrollment Date
  - o A student's most current first day of enrollment (or re-enrollment) in a school as reported on the WDE684.
- USDA Provision 2, 3 or Community Eligibility Provision (Free and Reduced School Lunch alternative program)
  - o The USDA Provision 2 or 3 program reduces application burdens and meal counting and claiming procedures. It allows schools to simply receive the same level of Federal cash and commodity assistance each year, with some adjustments, for a four (4) year period.
    - Source: [http://www.fns.usda.gov/cnd/Governance/prov-1-2-3/Prov1\\_2\\_3\\_FactSheet.htm](http://www.fns.usda.gov/cnd/Governance/prov-1-2-3/Prov1_2_3_FactSheet.htm)
    - During the first year, or base year, the school district determines free and reduced meal eligibility and reports student counts by type (e.g. Free or Reduced) via the Fall WDE684. Student counts reported on the WDE684 for the base year will be used to calculate the at-risk proxy for the funding model for the first year. During the next four years, the district makes no new eligibility determinations. The approved USDA provisional percentage will be used for at-risk determinations for the next four years until a new base year calculation is required.
  - o The Community Eligibility Provision (CEP) under Section 104(a) of the Healthy, Hunger Free Kids Act provides an alternative to household applications for free and reduced price meals for qualifying schools in high poverty areas. The CEP claiming percentages are established in the first year may be used for a period of four school years.
    - Source: <http://www.fns.usda.gov/school-meals/community-eligibility-provision>

#### Version Log

v1. Oct 2007: Original

v2. Nov 2008: Inclusion of ELL Monitored Students as ELL for purposes of At-Risk funding determination

v3. Feb 2010: Inclusion of Provision 2 USDA Lunch Program as equivalent to Provision 3 for purposes of At-Risk funding determination

v4. May 2011: Updated language from Chapter 8 Rules and Regulations, section 4, Definition of English Language Learner (ELL) Student

v5. March 2015: Updated language for base year reporting under USDA Provision 2 or 3 and CEP. WDE

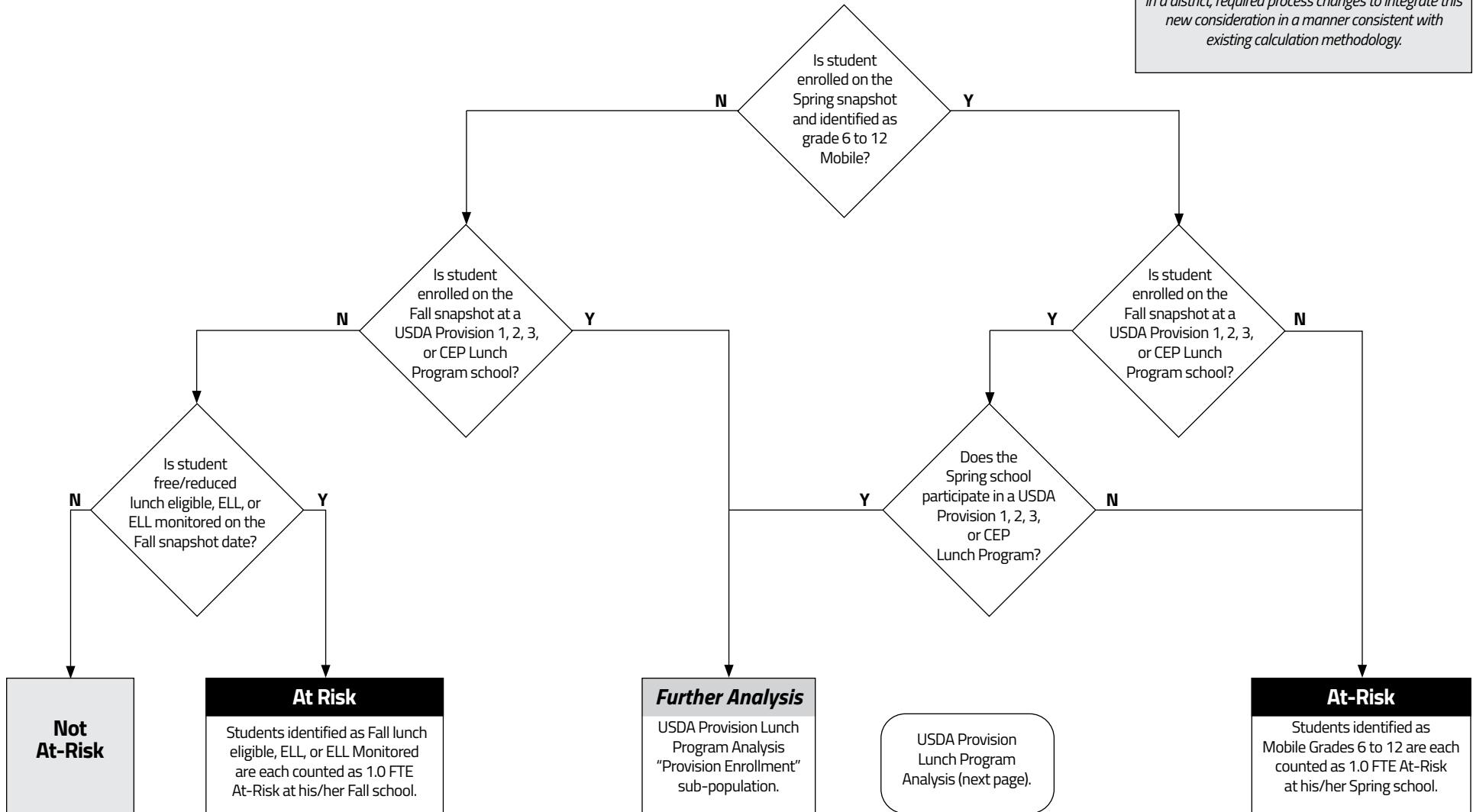
v6. August 2020

# Wyoming Department of Education

## At-Risk Determinations for the Wyoming Funding Model

*District Fall and Spring Student Data Submissions (WDE684) to the WDE: Primary (base, or non-concurrent) enrollment records at Wyoming public schools, grades K-12.*

*March 2015: Addition of Schools beginning to participate in USDA Lunch Community Eligibility Provision programs, and only at some (not all) schools in a district, required process changes to integrate this new consideration in a manner consistent with existing calculation methodology.*



# Wyoming Department of Education

## At-Risk Determinations for the Wyoming Funding Model

USDA Provision Lunch Program Analysis  
 "Provision Enrollment" sub-population  
 (from prior page)

**USDA Provision Lunch Program Analysis**

USDA Provision Lunch Program Analysis: The "Provision Enrollment" subpopulation includes all K-12 students enrolled on the Fall snapshot at a school which participates in a USDA Provision 1, 2, 3, or CEP Lunch Program EXCEPT those students who are then enrolled at a NON-Provision school in the same district on the Spring snapshot and meet criteria to be counted as At-Risk Mobile Grades 6 to 12.

The count of At-Risk students generated through this analysis is added to the number of At-Risk students identified during the initial portion of the overall process (Page 1) which also identified this "Provision Enrollment" sub-population.

If schools in a district have differing CEP % values, the "Provision Enrollment" count at each Fall school is multiplied by the school's CEP %, and the products are then summed.

