

COLLEGE COSTS AND SCHOLARSHIP INFORMATION

Each community college and the University of Wyoming have costs of attendance and additional scholarships listed on their websites. Visit their websites for more details.

CASPER COLLEGE

Casper
www.caspercollege.edu

CENTRAL WYOMING COLLEGE

Riverton
www.cwc.edu

EASTERN WYOMING COLLEGE

Torrington
www.ewc.wy.edu

LARAMIE COUNTY COMMUNITY COLLEGE

Cheyenne / Laramie
www.lccc.wy.edu

NORTHWEST COLLEGE

Powell
www.nwc.cc.wy.us

NORTHERN WYOMING COMMUNITY COLLEGE DISTRICT

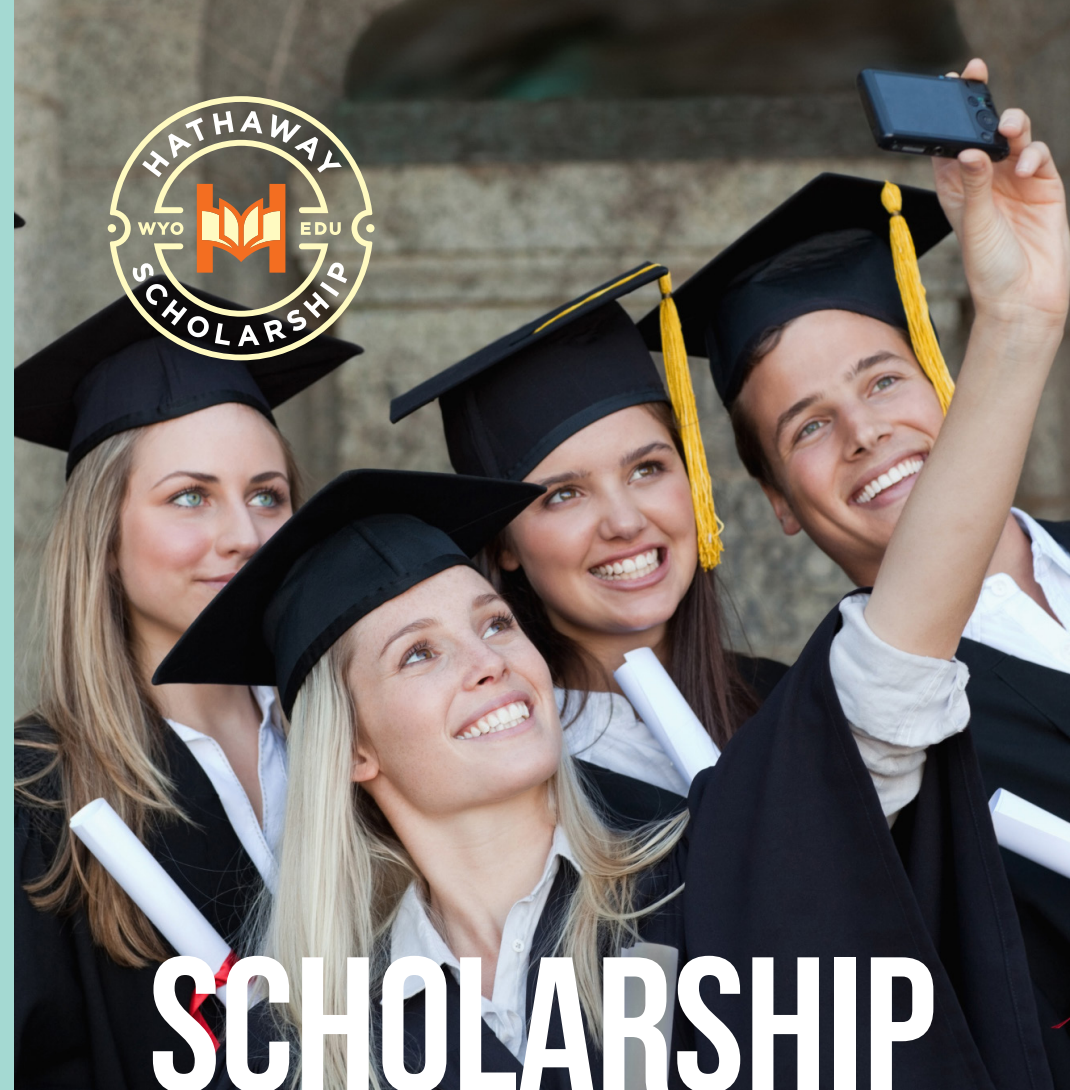
Sheridan / Gillette
www.sheridan.edu

WESTERN WYOMING COMMUNITY COLLEGE

Rock Springs
www.wwc.wy.edu

UNIVERSITY OF WYOMING

Laramie
www.uwyo.edu



SCHOLARSHIP REQUIREMENTS

INSIDE

The Hathaway Scholarship Program provides money for all qualified Wyoming high school graduates to go to college. Learn which high school courses are required to receive the different scholarship tiers and plan to reach these goals in order to earn money for your education.

www.hathawayscholarships.org



NOTES

DEAR STUDENTS,

In 2005, the state of Wyoming developed a program to give each Wyoming student the opportunity to attend college. The Wyoming legislature honored former Governor Stanley K. Hathaway by developing a scholarship program from the permanent Mineral Trust Fund he set up. Because of this trust fund, every year the state of Wyoming is able to invest over \$17 million dollars and over 5,800 scholarships to students to help them go to college in Wyoming.

Wyoming students have a unique opportunity unlike any other state and the information here will help you get your Hathaway Scholarship! Every Wyoming student has the opportunity to use the Hathaway Scholarship. Don't miss out; make sure you're one of them!

Talk to your school counselor or go to **hathawayscholarships.org** for more information.

Sincerely,

THE HATHAWAY SCHOLARSHIP TEAM

Two handwritten signatures in black ink. The top signature is a cursive name, and the bottom signature is a more stylized cursive name.

COLLEGE READINESS TESTING

WY-TOPP

The Wyoming Test of Proficiency and Progress (WY-TOPP) is a system of summative assessments in English language arts, mathematics, and science. For grades 3-10, the WY-TOPP summative assessments are given in the subjects of math and English language arts; students in grades 4, 8, and 10 will also be assessed in science.

ACT®

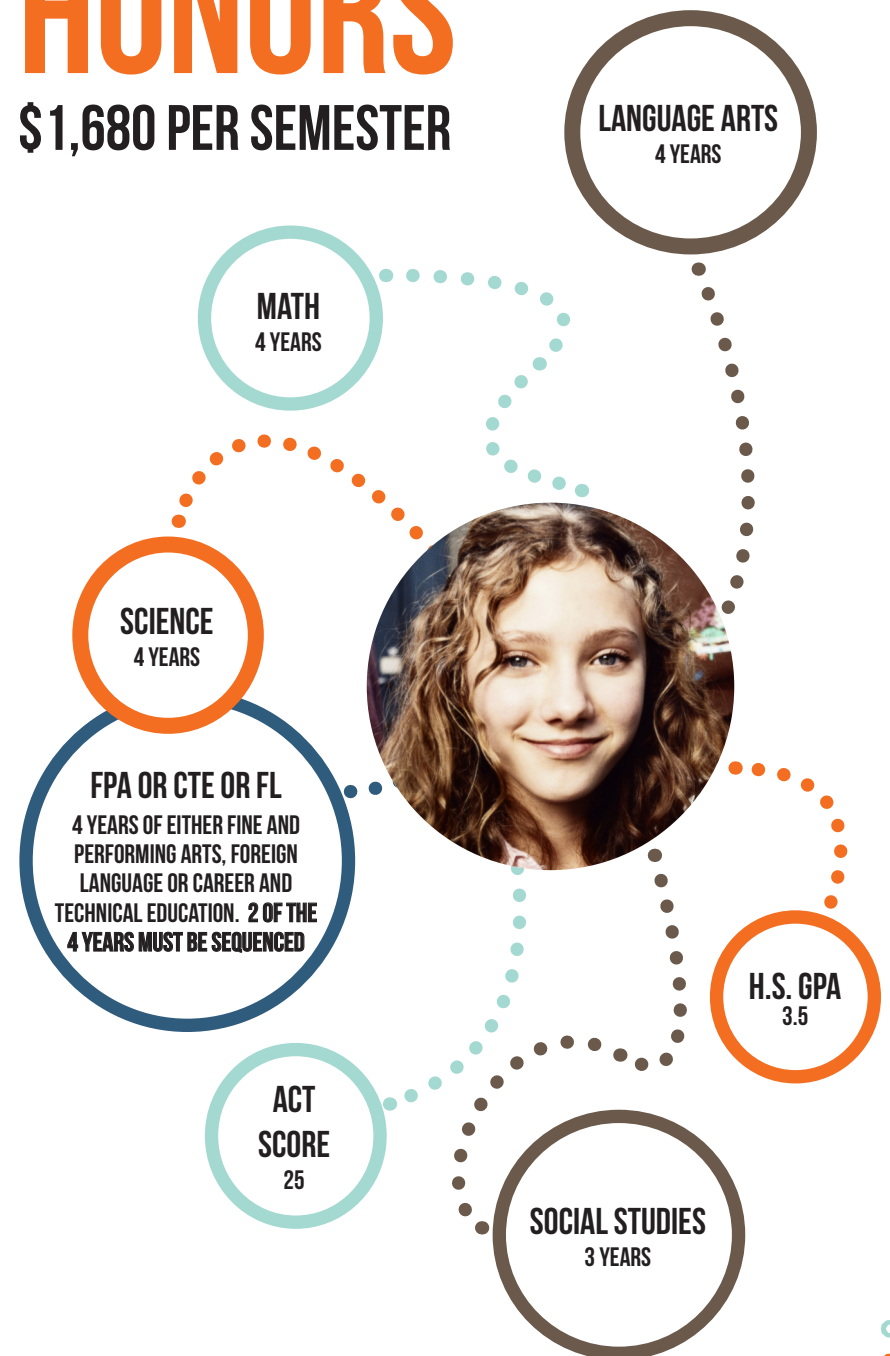
The ACT® is a national college admissions test accepted by colleges and universities in the U.S. including the University of Wyoming and all seven Wyoming community colleges. The ACT® score is also used to qualify students for scholarships such as one of the Hathaway Scholarships.

- All Wyoming 11th grade students take this test
- Score range: 1 - 36
- Test subjects: English, Math, Reading, Science, Writing
- Includes a career interest inventory to help students map an education & job path.



HONORS

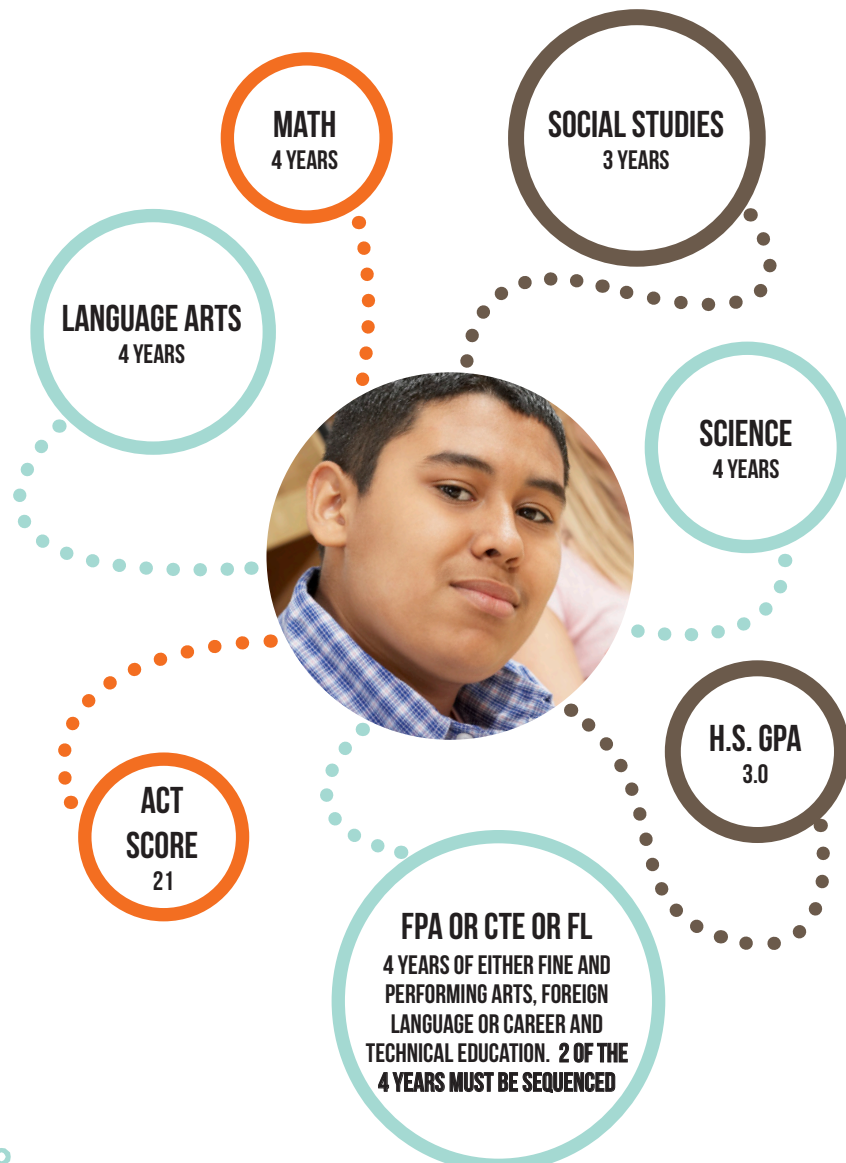
\$1,680 PER SEMESTER



SEE PAGE 6 FOR HONORS CURRICULUM REQUIREMENTS

PERFORMANCE

\$1,260 PER SEMESTER



SEE PAGE 6 FOR PERFORMANCE CURRICULUM REQUIREMENTS

PROVISIONAL OPPORTUNITY

LANGUAGE ARTS

Current high school graduation requirements.

MATH

Current high school graduation requirements, which includes at least two of these courses: Algebra I, Algebra II, Geometry.

SOCIAL STUDIES

Current high school graduation requirements.

SCIENCE

Current high school graduation requirements.

FPA or CTE or FL

2 years of either fine and performing arts, career and technical education, or foreign language (FL must be sequenced).

Go to www.hathawayscholarships.org, find the Hathaway Success Curriculum for your school district and use that to complete your Hathaway Scholarship Success Curriculum Plan.

HATHAWAY SUCCESS CURRICULUM REQUIREMENTS

HONORS AND PERFORMANCE

LANGUAGE ARTS – 4 YEARS

Taken during grades 9-12 only.

MATH – 4 YEARS

Algebra I, Algebra II, Geometry, and one “additional math” course (additional math must be taken in grades 9-12).

SOCIAL STUDIES – 3 YEARS

Taken during grades 9-12 only.

SCIENCE – 4 YEARS

Taken during grades 9-12 only. One year may include an “additional science” course.

FPA or CTE or FL

4 years of either fine and performing arts, foreign language or career and technical education. **2 of the 4 years must be sequenced.**

OPPORTUNITY

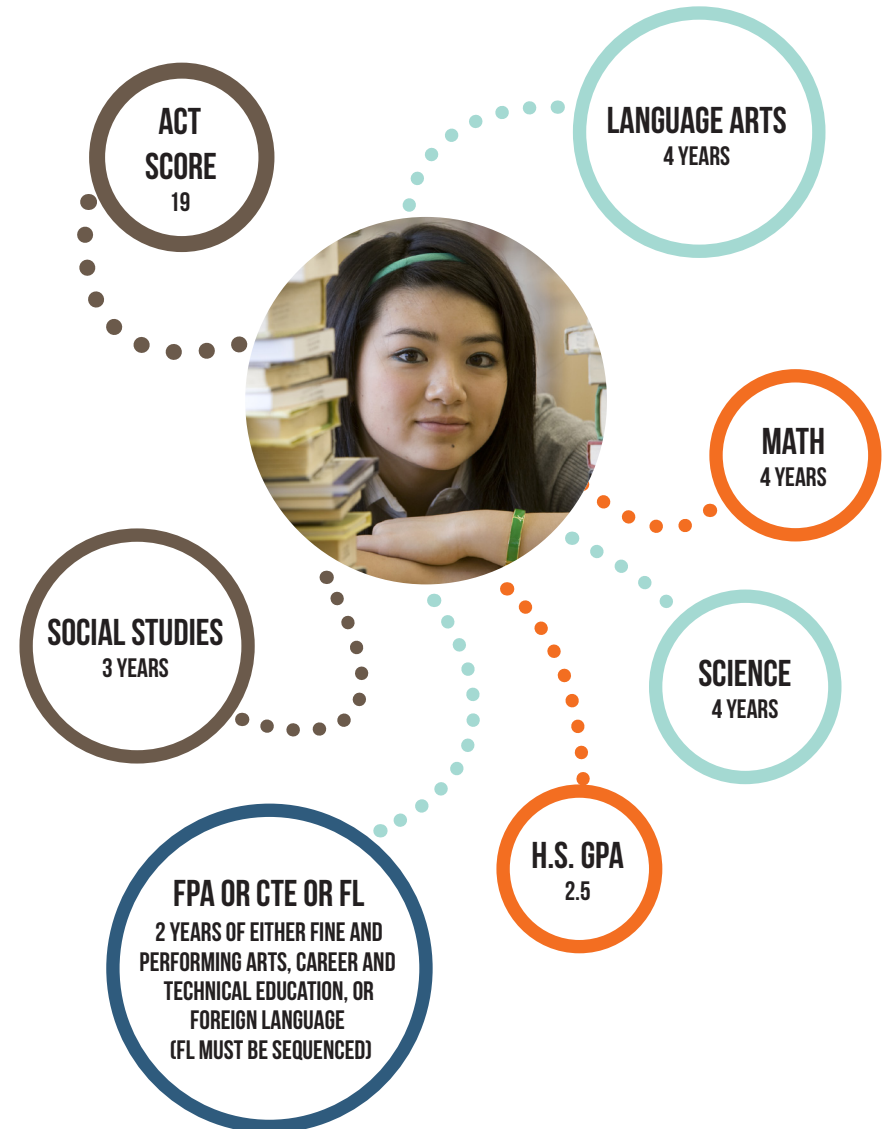
Requirements are the same as Honors and Performance Scholarships with one exception:

FPA or CTE or FL

2 years of either fine and performing arts, career and technical education, or foreign language (FL must be sequenced).

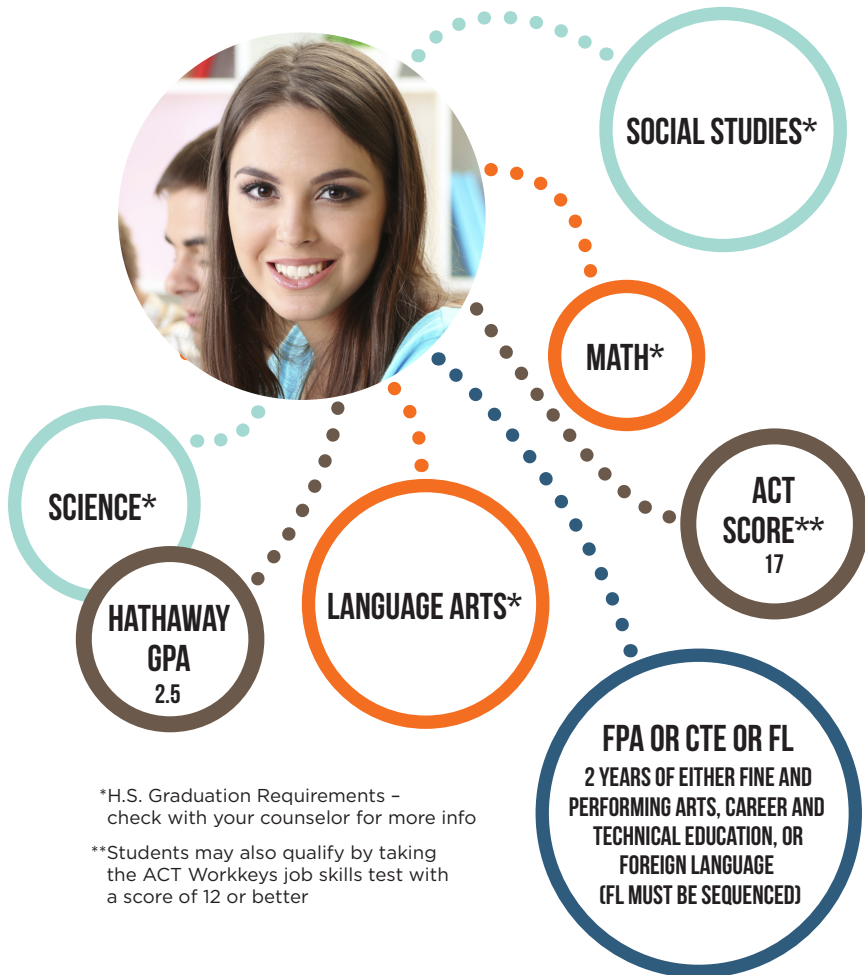
OPPORTUNITY

\$840 PER SEMESTER



PROVISIONAL OPPORTUNITY

\$840 PER SEMESTER

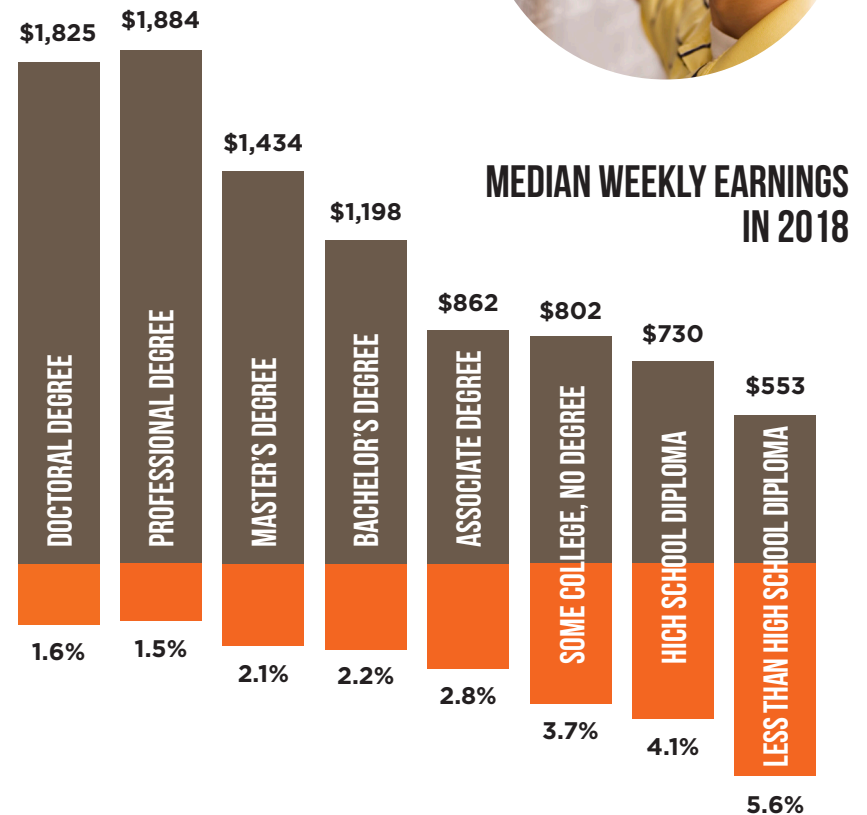


*H.S. Graduation Requirements - check with your counselor for more info

**Students may also qualify by taking the ACT Workkeys job skills test with a score of 12 or better

EDUCATION PAYS

EARNINGS AND UNEMPLOYMENT RATES BY EDUCATIONAL ATTAINMENT



UNEMPLOYMENT RATE IN 2018

Data are for persons age 25 and over. Earnings are for full-time wage and salary workers.

Source: Current Population Survey, U.S. Bureau of Labor Statistics, U.S. Department of Labor.