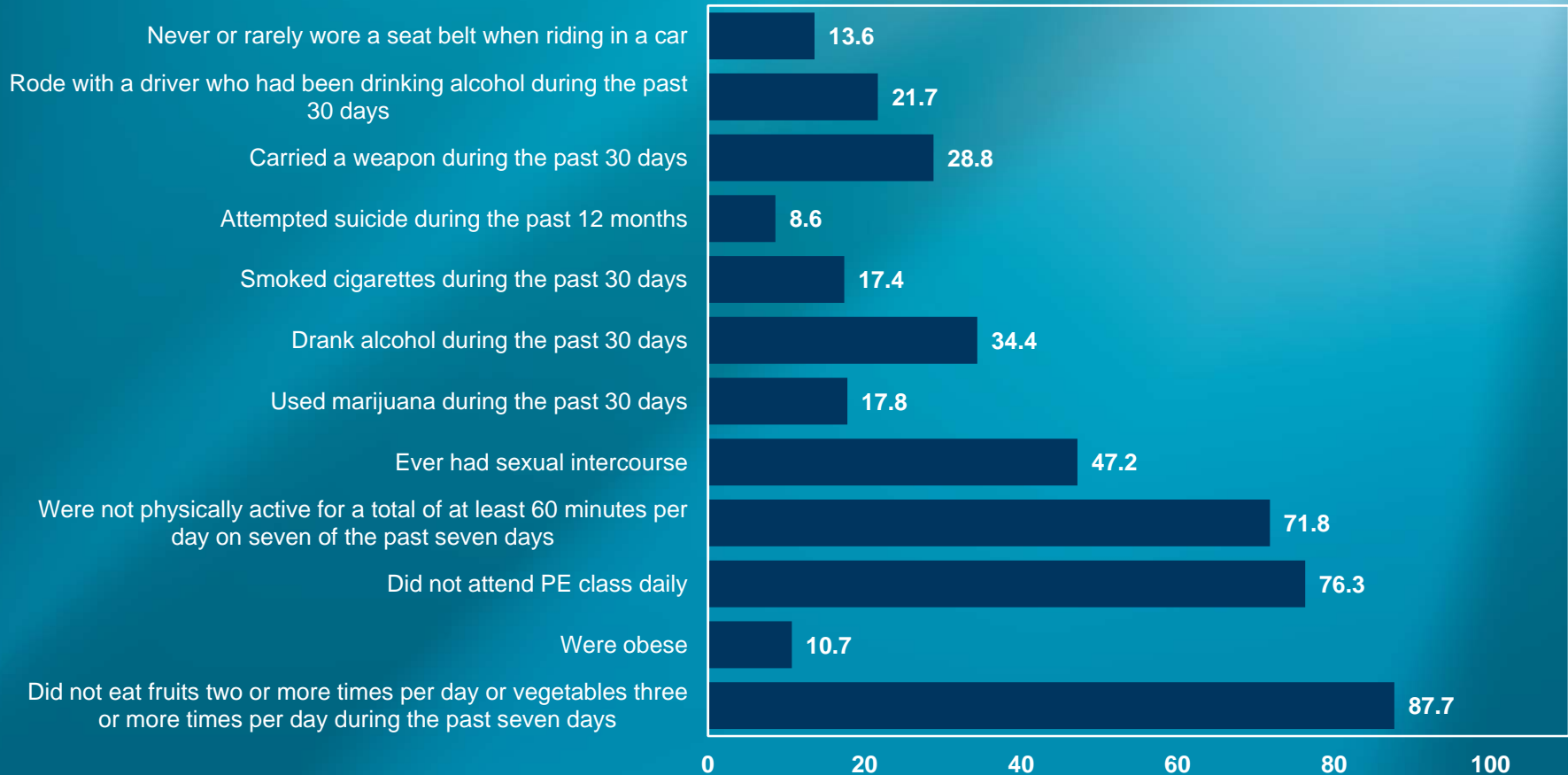


2013 Youth Risk Behavior Survey Results

Wyoming High School Survey Summary Graphs

Percentage of students who:

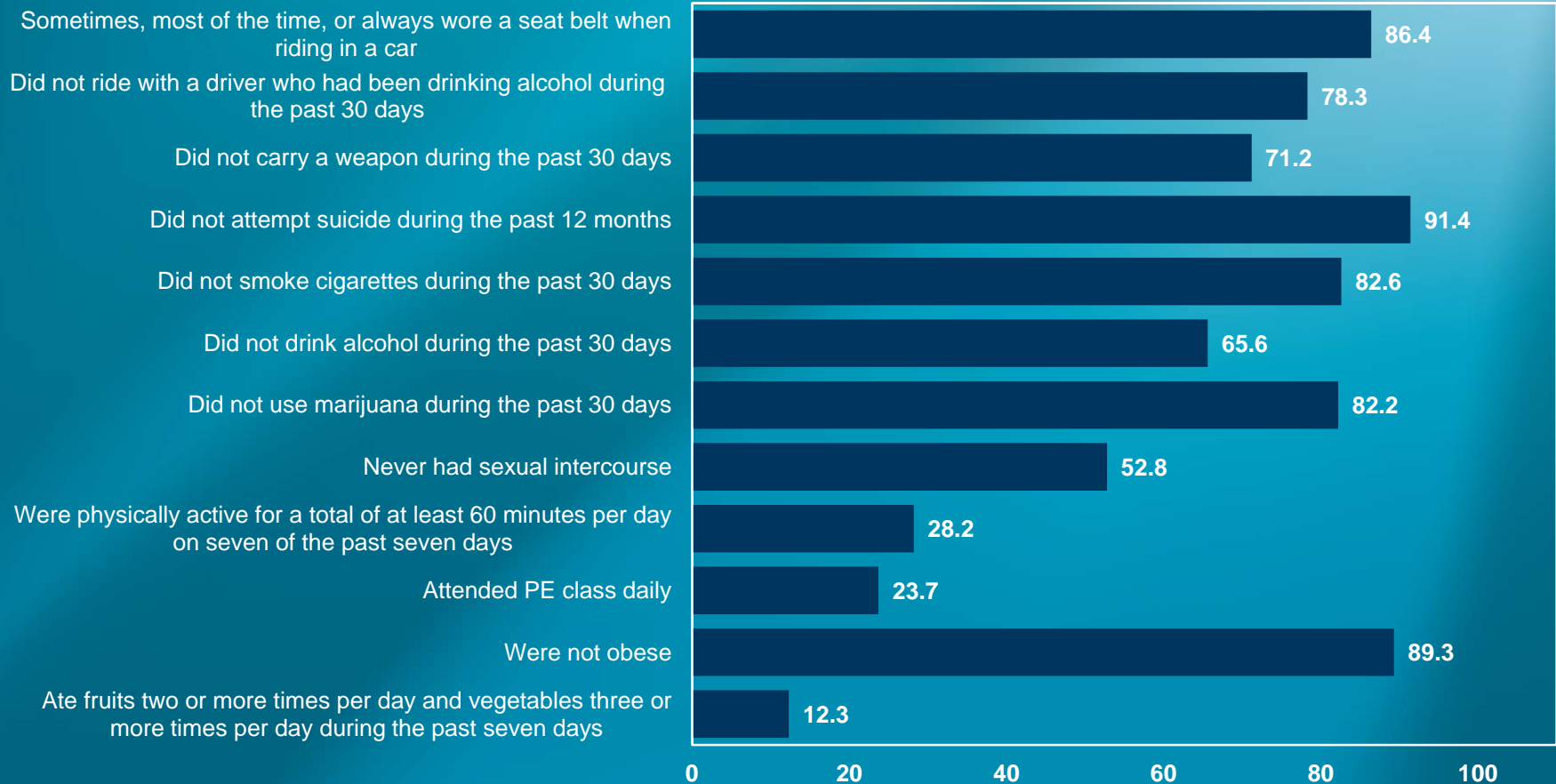


Note: This graph contains weighted results. See the corresponding summary tables for detailed explanation of data.

2013 Youth Risk Behavior Survey Results

Wyoming High School Survey Summary Graphs

Percentage of students who:

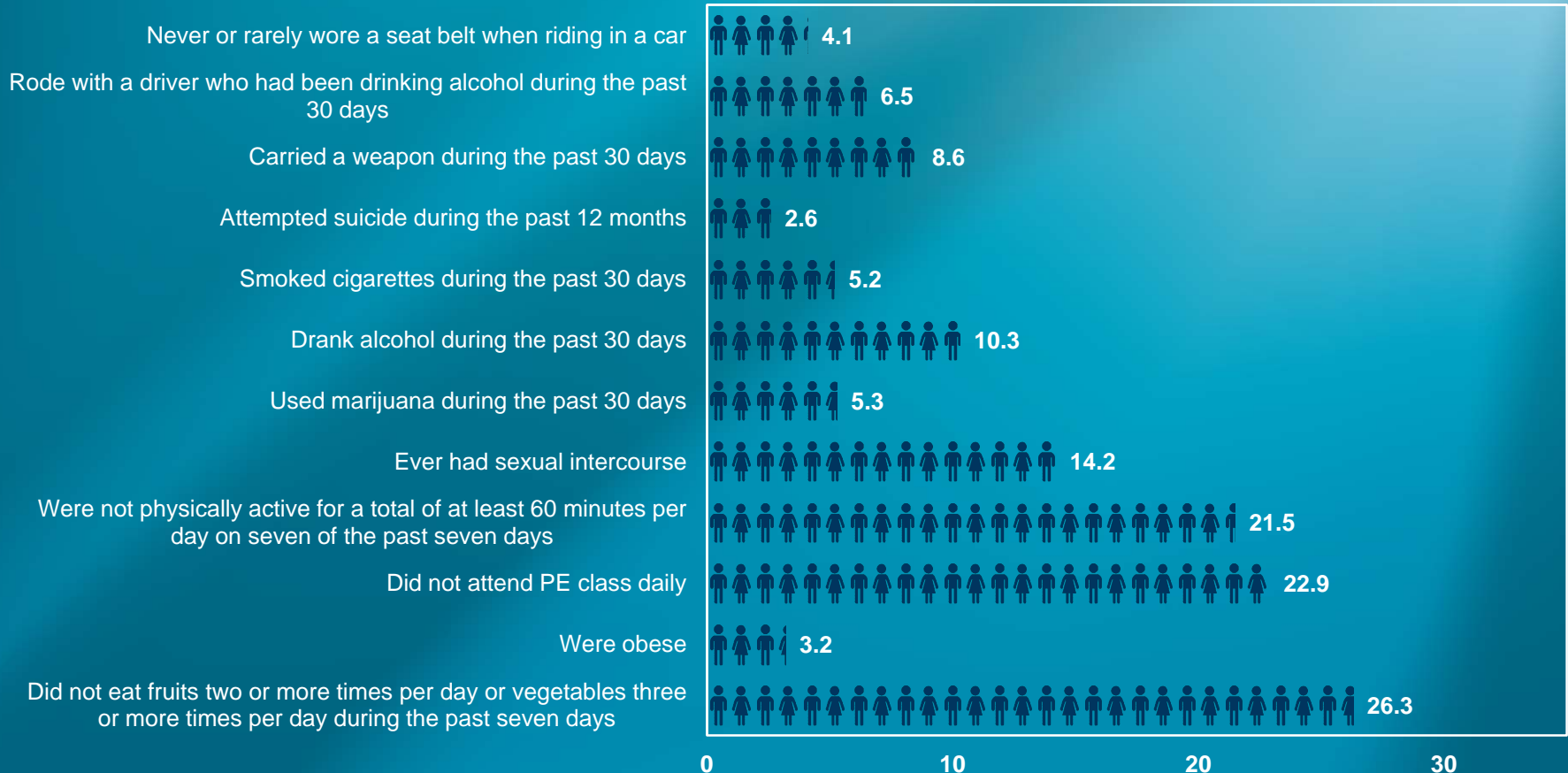


Note: This graph contains weighted results. See the corresponding summary tables for detailed explanation of data.

2013 Youth Risk Behavior Survey Results

Wyoming High School Survey Summary Graphs

Number of students in a class of 30 who:

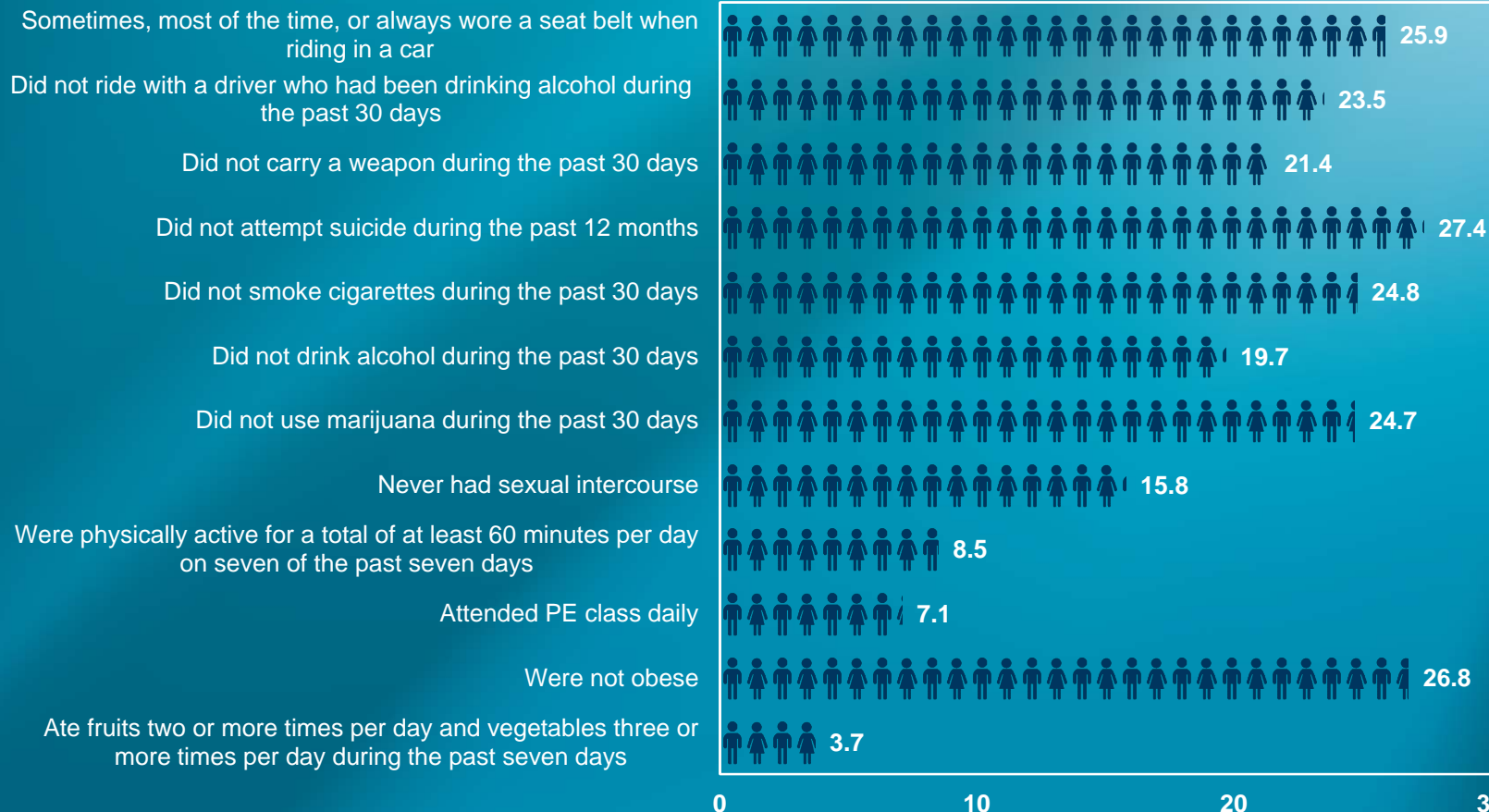


Note: This graph contains weighted results. See the corresponding summary tables for detailed explanation of data.

2013 Youth Risk Behavior Survey Results

Wyoming High School Survey Summary Graphs

Number of students in a class of 30 who:



Note: This graph contains weighted results. See the corresponding summary tables for detailed explanation of data.