



Wyoming Department of Education

Cindy Hill, Superintendent of Public Instruction
Hathaway Building, 2nd Floor, 2300 Capitol Avenue
Cheyenne, WY 82002-0050
Phone: (307) 777-7675 | Fax: (307) 777-6234 | edu.wyoming.gov

MEMORANDUM NO. 2014-117

TO: District Superintendents
School Principals

FROM: Tonya Gerharter, Education Consultant
Support Systems and Resources Division

DATE: September 29, 2014

SUBJECT: WyoBio for Educators

WYOBIO FOR EDUCATORS

Wyoming Biodiversity Citizen Science Initiative

CHEYENNE - WyoBio is the newest resource for teaching biodiversity science in Wyoming. This map-based tool allows students to upload data collected on plants and animals and compare their observation data to those of professional and citizen scientists. Additional map layers (including elevation, climate, human disturbance and more) can be overlaid on species observations and range maps.

Using WyoBio is easy, visit www.wyobio.org to explore the map, access resources and download lesson plans. Registration is required to submit observations, but the application is available to all visitors.

In collaboration with Wyoming citizen scientists, WyoBio is expanding, as is the selection of lesson plans designed to use WyoBio to meet educational standards. WyoBio has been designed and built with educators, with educators in mind. Please visit, register and explore!

This [information packet](#) gives you an overview of the website and how you can use it in your classroom. Hard copies available by request, please email wyobio@uwyo.edu.

For more information contact Brenna R. Marsicek at brenna.marsicek@uwyo.edu

Attached: WyoBio For Educators Flyer

Wyoming Biodiversity Citizen Science Initiative



WyoBio for Educators

Wyoming Biodiversity Citizen Science Initiative



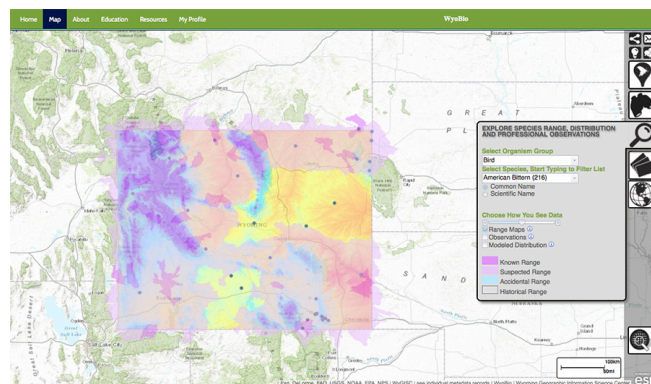
Taking students out of the classroom, bringing Wyoming-based biodiversity science into the classroom.

WyoBio is the newest resource for teaching biodiversity science in Wyoming. This map-based tool allows students to upload data collected on plants and animals and compare their observation data to those of professional and citizen scientists. Additional map layers (including elevation, climate, human disturbance and more) can be overlaid on species observations and range maps.

Using WyoBio is easy! Visit www.wyobio.org to explore the map, access resources and download lesson plans. Registration is required to submit observations, but the application is available to all visitors.

WyoBio is growing! In collaboration with Wyoming citizen scientists, the database is expanding, as is the selection of lesson plans designed to use WyoBio to meet educational standards. WyoBio was designed and built with educators, with educators in mind.

Please visit, register and explore!



INFORMATION PACKET

Wyoming Biodiversity Citizen Science Initiative

Download the Information packet for teachers!

This information packet gives you an overview of the website and how you can use it in your classroom. Or request hard copies by emailing wyobio@uwyo.edu.

> [Click here to download!](#)

