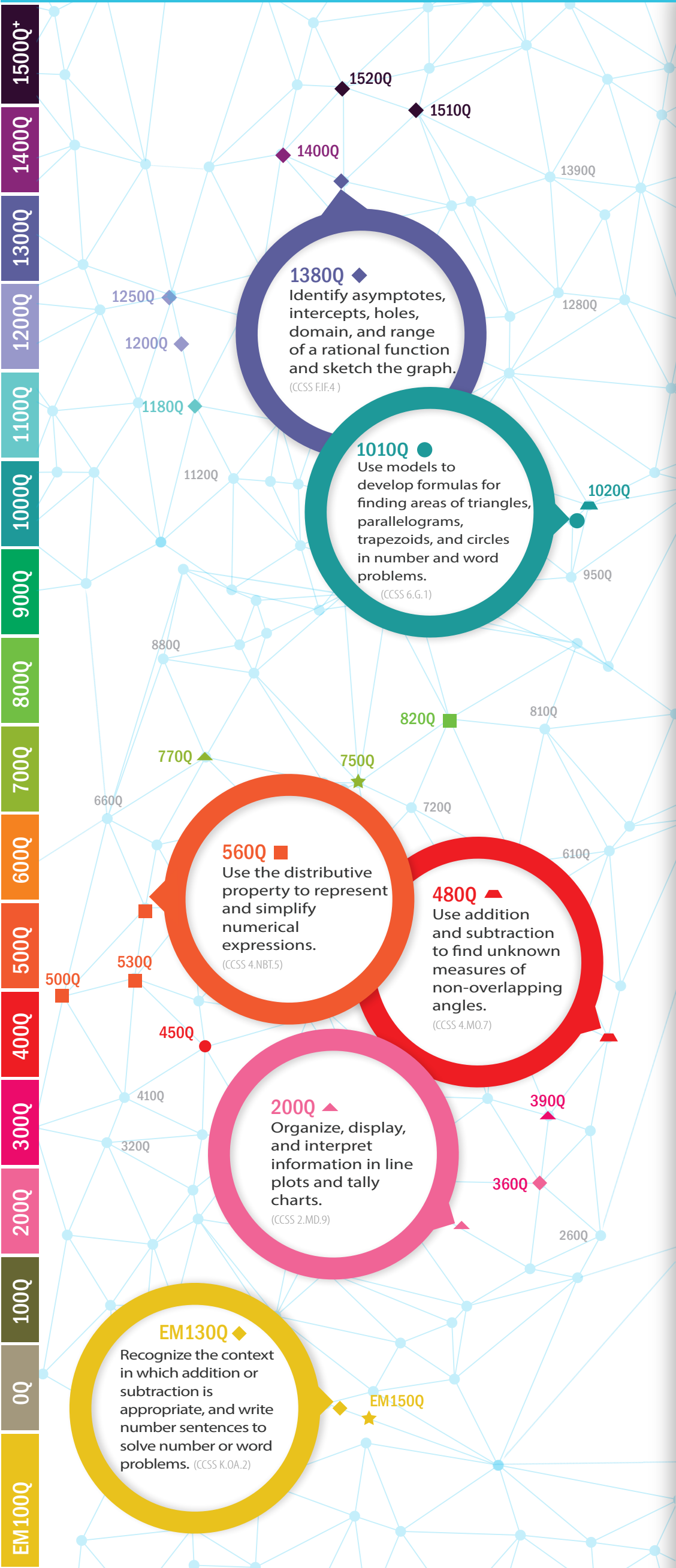




QSCs ORGANIZED BY QUANTILE® MEASURE

EXEMPLARS FROM OVER 500 QUANTILE SKILLS & CONCEPTS



QUANTILE  
MEASURE

- 1520Q** Identify continuous and discontinuous functions and locate points of discontinuity.
- 1510Q** Graph tangent, cotangent, secant, and cosecant functions and identify the domain, range, period, and asymptotes of the function.
- 1400Q** Use the definition of a hyperbola to identify characteristics, write an equation and graph the relation.
- 1380Q** Identify asymptotes, intercepts, holes, domain, and range of a rational function and sketch the graph.
- 1250Q** Identify the undefined values of rational algebraic expressions.
- 1200Q** Identify and interpret zeros of a quadratic function using factoring in algebraic and word problems.
- 1180Q** Use and interpret function notation in number and word problems; determine a value of the function given an element of the domain.
- 1020Q** Define and identify complementary and supplementary angles.
- 1010Q** Use models to develop formulas for finding areas of triangles, parallelograms, trapezoids, and circles in number and word problems.
- 820Q** Rewrite or simplify algebraic expressions including the use of the commutative, associative, and distributive properties, and inverses and identities, in number and word problems.
- 770Q** Organize, display, and interpret information in stem-and-leaf plots.
- 750Q** Describe the effect of operations on size and order of numbers.
- 560Q** Use the distributive property to represent and simplify numerical expressions.
- 530Q** Estimate and compute products of whole numbers with multi-digit factors.
- 500Q** Use order of operations including parentheses and other grouping symbols to simplify numerical expressions.
- 480Q** Use addition and subtraction to find unknown measures of non-overlapping angles.
- 450Q** Determine the area of rectangles, squares, and composite figures using nonstandard units, grids, and standard units in number and word problems.
- 390Q** Organize, display, and interpret information in tables and graphs (frequency tables, pictographs, and line plots).
- 360Q** Write addition and subtraction sentences that represent a number or word problem; solve.
- 200Q** Organize, display, and interpret information in line plots and tally charts.
- EM130Q** Recognize the context in which addition or subtraction is appropriate, and write number sentences to solve number or word problems.
- EM150Q** Describe, compare and order objects using mathematical vocabulary.

## GLOSSARY

**Emerging Mathematician (EM)** A code that comes before a Quantile measure of below zero for material and student measures at early levels.

**Quantile Skill and Concept (QSC)**  
The description of a skill and its Quantile measure.

For more information and free resources,  
visit [www.Quantiles.com](http://www.Quantiles.com).

- ◆  
ALGEBRA  
& ALGEBRAIC  
THINKING
- ★  
NUMBER  
SENSE
- NUMERICAL  
OPERATIONS
- MEASUREMENT
- ▲  
GEOMETRY
- ▲  
DATA ANALYSIS,  
STATISTICS  
& PROBABILITY