

Grade 3
Released Items

3N2

Number Operations and Concepts - Understand ways to represent numbers, relationships among numbers, and number systems

Mr. Johnson wrote the number shown below on the classroom board.

8436

**Part A. What is the place value of the digit 4 in 8,436?
Show or explain how you got your answer.**

Place Value: _____

Part B. In the space below, write 8,436 in word form.

3N3

Number Operations and Concepts - Develop the connection between conceptual understanding and computational proficiency

Ashley counted the birds on an art poster in the library. The table below shows the number of each type of bird Ashley counted.

Art Poster Bird Count

Type of Bird	Number Counted
Wood Duck	18
Golden Eagle	4
Green Heron	9
Wild Turkey	12

What is the total number of Wood Ducks and Wild Turkeys Ashley counted on the art poster in the library?

- A 6
- B 18
- C 20
- D 30

337656 A family took a car trip. They traveled 18 miles before stopping the first time. Then they traveled another 17 miles before stopping the second time. What is the total number of miles the family had traveled when they stopped the second time?

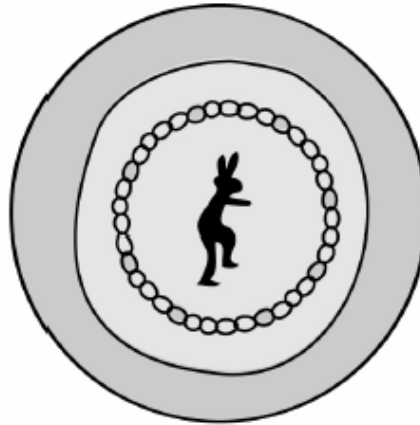
- A . 30 mi
- B . 33 mi
- C . 35 mi
- D . 45 mi

3G2

Geometry - Analyze characteristics and properties of two- and three-dimensional geometric shapes

Shane drew a picture of the new rug in his bedroom.

3337804



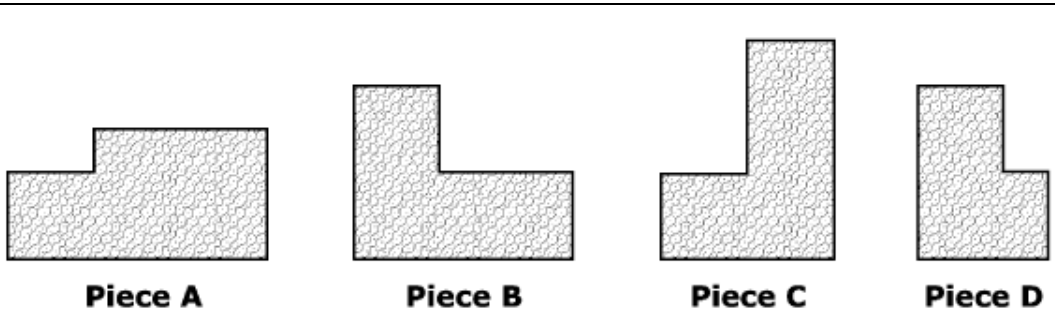
Which best describes the shape of Shane's new rug?

- A . Triangle
- B . Square
- C . Rectangle
- D . Circle

3G3

Geometry - Apply transformations and use symmetry to analyze mathematical situations

The Martin family put new carpet on their living room floor. They had four pieces of carpet left over. The pieces are shown below.



Which two pieces appear to be congruent?

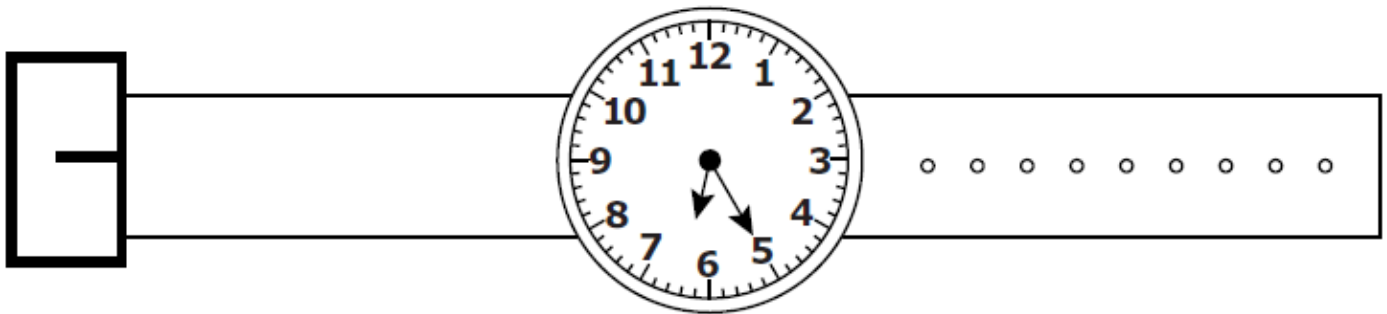
- A Piece B and Piece D
- B Piece B and Piece C
- C Piece A and Piece C
- D Piece A and Piece B

3M1

Measurement - Understand measurable attributes of objects and the units, systems, and processes of measurement

3556376

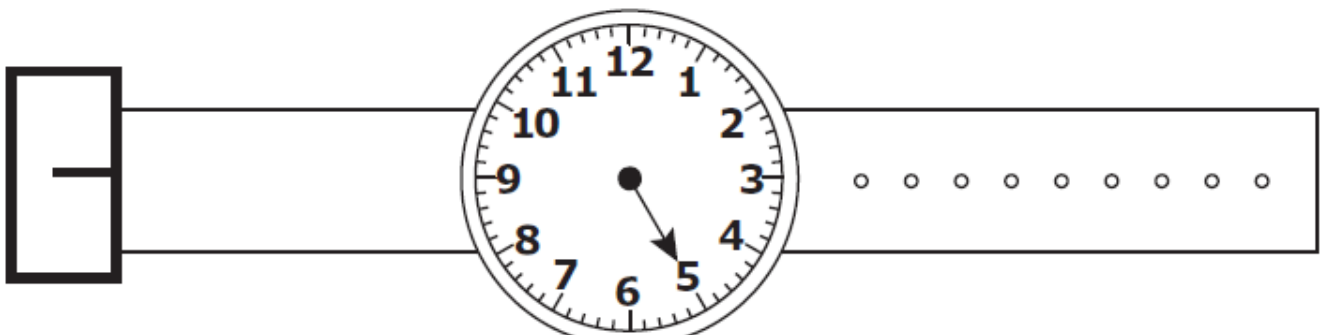
The watch pictured below shows the time Kelli entered the state of Wyoming.



Part A. What is the time shown on the watch? Write your answer in the space below.

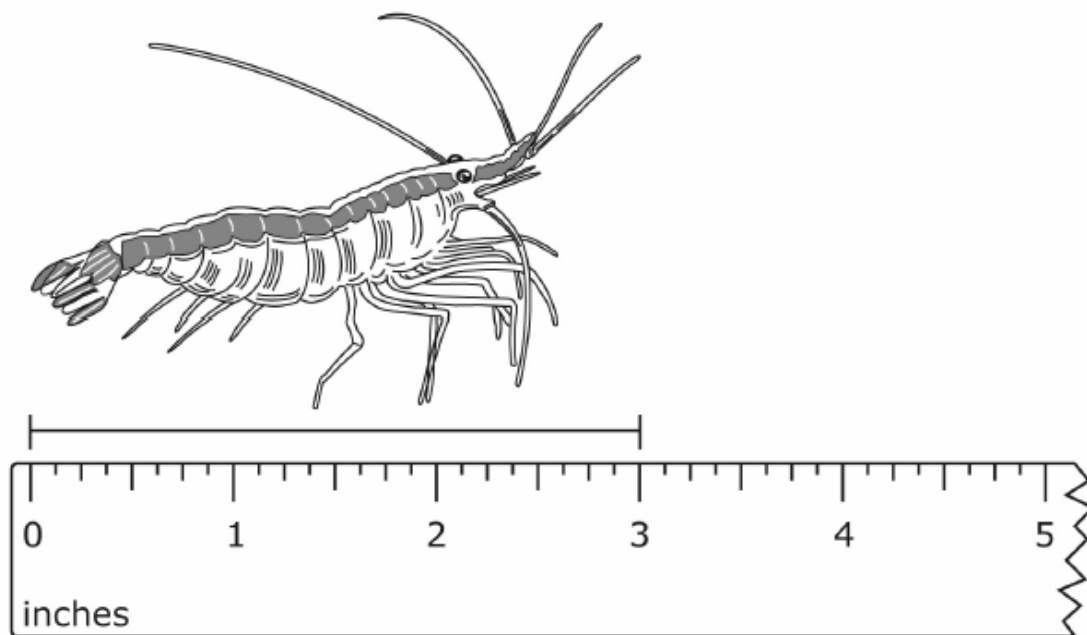
Time (a.m.): _____

Part B. Kelli left Wyoming at 11:25 p.m. Draw the hour hand on the watch pictured below to correctly show the time Kelli left Wyoming.



A picture of a shrimp is shown below.

3337840



Using the ruler shown, which of these is closest to the length of the shrimp in inches?

1 in.
A .

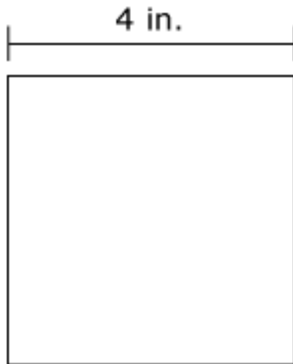
2 in.
B .

3 in.
C .

4 in.
D .

3M2

Measurement - Apply appropriate techniques, tools, and formulas to determine perimeter, area or volume



Kate is making a square card for her friend. The picture shows Kate's card.

What is the perimeter in inches of Kate's card?

- A 4 inches
- B 8 inches
- C 12 inches
- D 16 inches

3A1

Algebra - Understand patterns, relations, and functions

Marilyn made the pattern shown below.

6, 12, 18, 24, 30, 36, ...

Which of these could be the rule Marilyn used to make this pattern?

A Add 4

B Add 6

C Multiply by 2

D Multiply by 6

Pauline saw some buses lined up as shown below.



She noticed that the numbers on the sides of the buses formed a pattern. If this pattern continues, what number should replace the "?" on the 5th bus? Write your answer in the space below. Explain how you got your answer.

Number: _____

3D1

Data Analysis and Probability - Collect, organize, and display relevant data to answer questions and use appropriate statistical methods to analyze the data

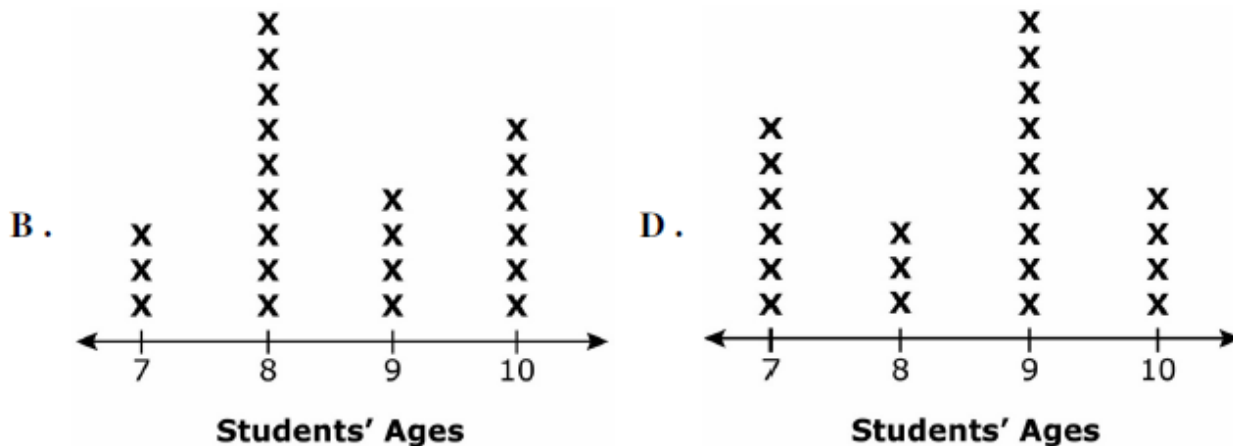
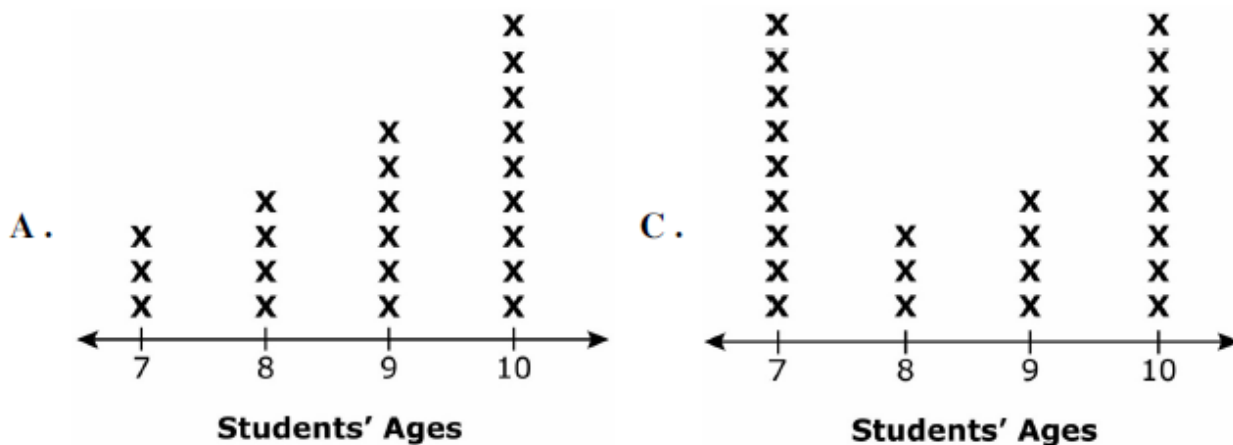
The table below shows the number of students by age who were taking music lessons.

3337551

Students Taking Music Lessons

Age	Number of Students
7	3
8	9
9	4
10	6

Which line plot below correctly shows the data from the table?



3D2

Data Analysis and Probability - Develop and evaluate inferences and predictions that are based on data

Anthony has a basket with toy cars that are all the same shape and size. The number of cars of each color is shown in the table below.

Basket of Toy Cars

Car Color	Number of Cars	Car Color	Number of Cars
Blue	22	Purple	31
Green	27	White	18
Silver	24	Yellow	29

If Anthony reaches into the basket without looking and chooses one toy car, which color of car is he most likely to choose?

- A Blue
- B Green
- C Purple
- D Yellow