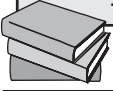


Read the Web site as if you were researching the library's services. After reading the Web site, answer the questions as if you were evaluating the usefulness of the library's Web site.

Grayson County Public Library

1010 West Street Mierra, Wyoming Phone: (888) 591-4928 Fax: (888) 334-6639



Home

Services

Articles/Databases

Local Writers

Membership Application

Thanks to the generous contributions of the local community, the Grayson County Public Library has been in operation since 1965. The library, a non-profit organization, accepts donations of new and gently used books for its collection. Also, with recent renovations completed, the Internet is available, free of charge, for library members. Members may use one of five terminals to surf the Web for 30 minutes at a time. Students have priority usage during the school year.

The library includes fiction, biography, nonfiction, reference, and children's sections, as well as a newly added section for teens. The library is open Monday through Thursday 8 a.m.-8 p.m. and Friday and Saturday 8 a.m.-10 p.m.

[Board of Trustees](#)

[Policies: Overdue books, late fees, loan periods, limits](#)

[Employment](#)

[Volunteer](#)

[E-Books](#)

[Frequently Asked Questions](#)

Special Events:

- Computer classes are now available for \$15 per class. Learn basic computer skills, such as word processing, designing Web sites, and using the Internet. See Myrna Willer for details.
- Children's Story Hour comes to Grayson County Public Library! On Mondays and Wednesdays, hear Mr. Wayne Wilson read classic literary favorites to children aged 5-12. Free admission.

My Library Account:

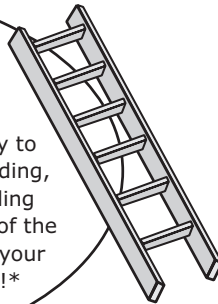
Using the 10-digit number on the back of your library card, you can check the status of your account as well as access the online catalog of the Grayson County Public Library. Please note that you must check out books in person. You may renew or place a book on hold through online services. The library is proud to offer online service to customers 24 hours a day.

Enter Library Card Number:

Enter First and Last Name:

YOUNG READERS CLUB: CLIMBING TO SUCCESS

For the next two months, the Young Readers Club will be reading their way to new heights. For each hour spent reading, fill in a step of the ladder on the Reading Ladder Log. When you reach the top of the ladder, come to the library and claim your prize! Ages 5-12. Participation is free!*



* For residents of Grayson County. All others will be charged \$10.

A new feature will be coming soon! Teachers in the community will be volunteering their time to serve as online tutors. They will be available to help with homework questions!

COMING
THIS 
FALL. . .

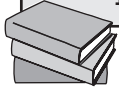
**Homework
Helper!**

Have a specific research question? Our librarians at the Reference Desk can help! Email your question to GCPL@library.net, and our librarians will work to find an answer for you!



Grayson County Public Library

1010 West Street Mierra, Wyoming Phone: (888) 591-4928 Fax: (888) 334-6639



Home

Services

Articles/Databases

Local Writers

Membership Application

To obtain a library card, you must be a resident of Grayson County. Please bring proof of residency, such as a water bill, when you apply for your library card. Children under the age of 12 who live in Grayson County may also receive a library card when accompanied by a parent or guardian. Library membership is free for Grayson County residents. Teachers may receive a special library card with proof of employment. Teachers receive the privileges of a higher check-out limit and longer check-out periods.

Print out this application. Submit the completed application in person to Grayson County Public Library for processing.

Please print legibly in ink.

Name: _____

Address: _____

Phone Number: _____

Email: _____

Date of Birth: _____

If a teacher, please indicate school where employed: _____

For office use only:

Proof of residency supplied: _____

Assigned library card number: _____

Teacher: Yes/No School: _____

SPECIAL NOTE: For people who live outside of Grayson County, a library card may be obtained for a charge of \$50 per year, or \$20 for 3 months. For such memberships, all rules and regulations apply.

What makes a teacher's library card different from a standard library card?

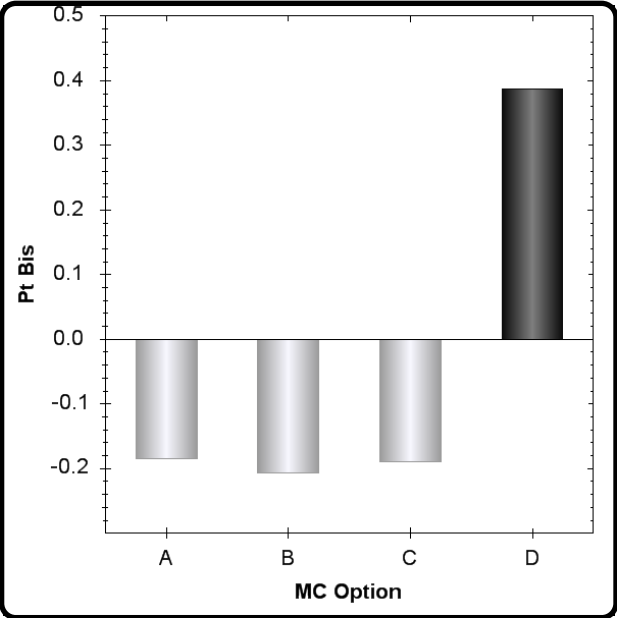
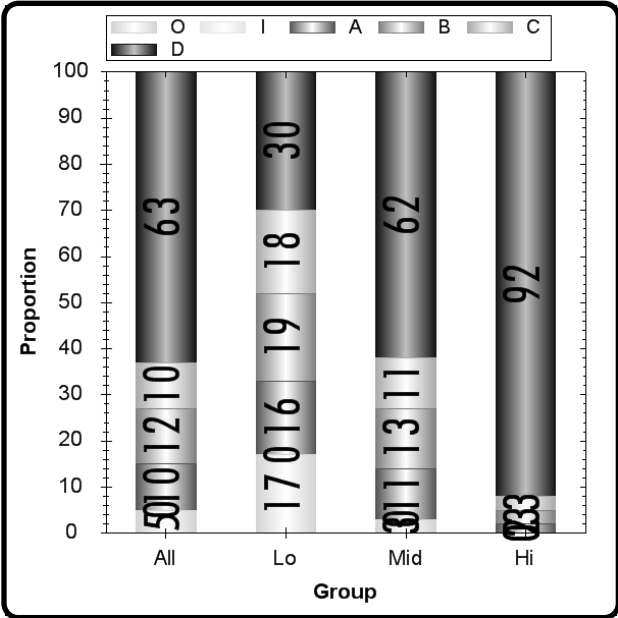
- A** It allows teachers to get research help from the Reference Desk.
- B** It allows teachers to place books on hold using the online service.
- C** It allows teachers to access the Web longer than other people.
- D** It allows teachers to check out more books than other people.

Type	Max Points	Key	N Count	Item Mean	Discrimination
Multiple Choice	1	D	2019	0.663	0.388

Rasch Diff	Diff SE	Infit	Outfit
0.093	0.060	0.920	0.860

	A	B	C	D	Omit	Invalid
All	10	12	10	63	5	0
Low Scorers	16	19	18	30	17	0
Middle Scorers	11	13	11	62	3	0
High Scorers	2	3	3	92	0	0

MC Item Option Discriminations			
A	B	C	D
-0.185	-0.207	-0.190	0.388



Notes:
White students may perform better on this item as compared to Hispanic students. (B)

Which library policy applies to 14-year-old Samuel who lives in Grayson County?

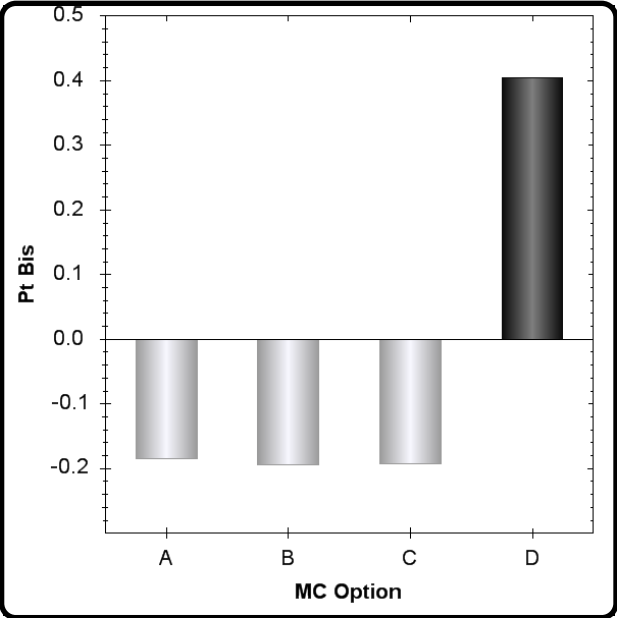
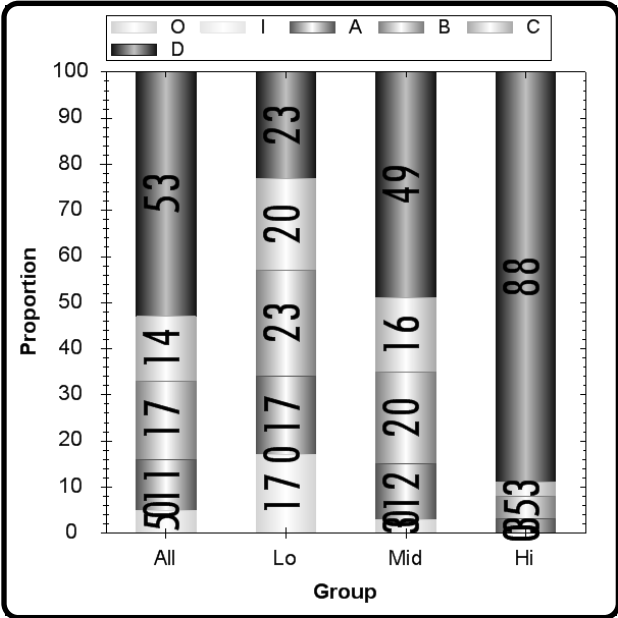
- A** He would pay \$50 to check out books during a 12-month period.
- B** He would pay \$10 to take part in the library's Young Readers Club.
- C** He would pay \$20 to check out books during the 3 months of summer.
- D** He would pay \$15 to take a computer class offered at the library.

Type	Max Points	Key	N Count	Item Mean	Discrimination
Multiple Choice	1	D	2015	0.559	0.404

Rasch Diff	Diff SE	Infit	Outfit
0.590	0.057	0.930	0.890

	A	B	C	D	Omit	Invalid
All	11	17	14	53	5	0
Low Scorers	17	23	20	23	17	0
Middle Scorers	12	20	16	49	3	0
High Scorers	3	5	3	88	0	0

MC Item Option Discriminations			
A	B	C	D
-0.185	-0.194	-0.192	0.404



Notes:

Which library services will most likely be used by members who are keeping a Reading Ladder Log?

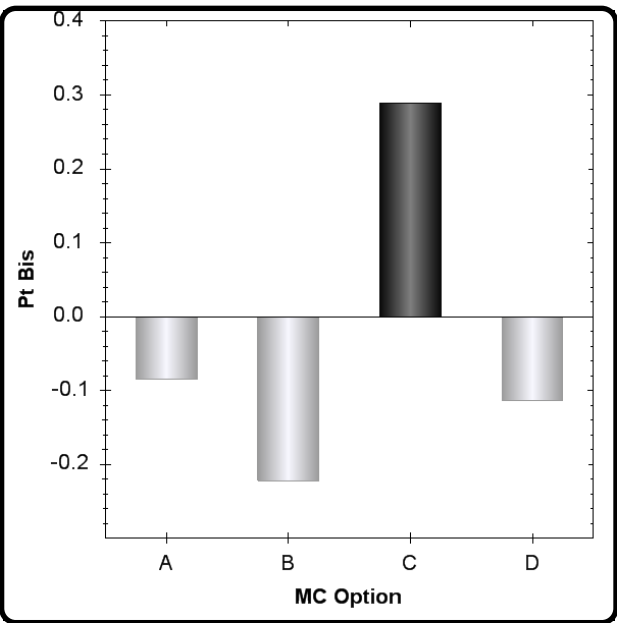
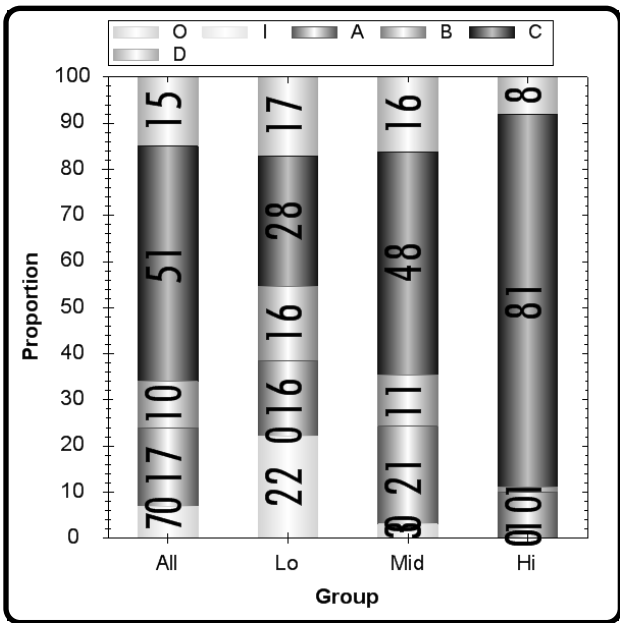
- A** The Reference section and the Internet
- B** Volunteer and Employment services
- C** The Children's and Teen sections
- D** Special Events and E-Books service

Type	Max Points	Key	N Count	Item Mean	Discrimination
Multiple Choice	1	C	1963	0.545	0.289

Rasch Diff	Diff SE	Infit	Outfit
0.637	0.057	1.070	1.090

	A	B	C	D	Omit	Invalid
All	17	10	51	15	7	0
Low Scorers	16	16	28	17	22	0
Middle Scorers	21	11	48	16	3	0
High Scorers	10	1	81	8	0	0

MC Item Option Discriminations			
A	B	C	D
-0.085	-0.222	0.289	-0.113



Notes:

Which activity can be done by accessing an online library account?

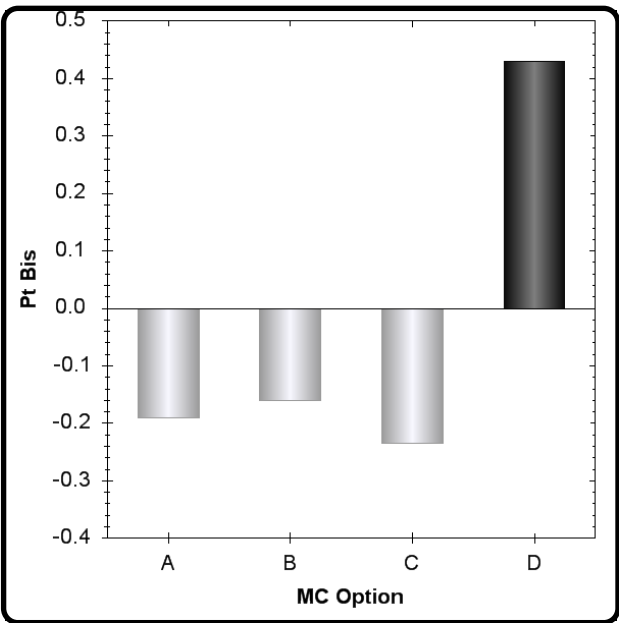
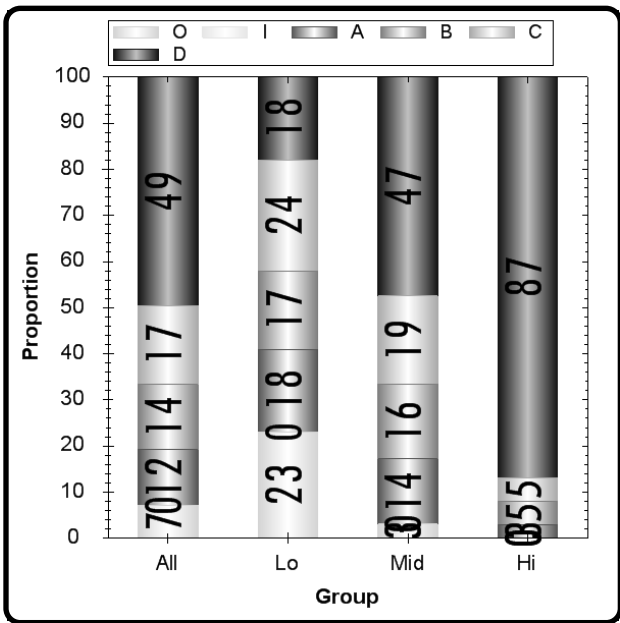
- A** Making a financial donation
- B** Paying a library fine
- C** Checking out a book
- D** Renewing a checked-out book

Type	Max Points	Key	N Count	Item Mean	Discrimination
Multiple Choice	1	D	1960	0.530	0.429

Rasch Diff	Diff SE	Infit	Outfit
0.694	0.057	0.920	0.880

	A	B	C	D	Omit	Invalid
All	12	14	17	49	7	0
Low Scorers	18	17	24	18	23	0
Middle Scorers	14	16	19	47	3	0
High Scorers	3	5	5	87	0	0

MC Item Option Discriminations			
A	B	C	D
-0.191	-0.161	-0.235	0.429



Notes:

Which phrase best summarizes the purpose of the Grayson County Public Library's Web site?

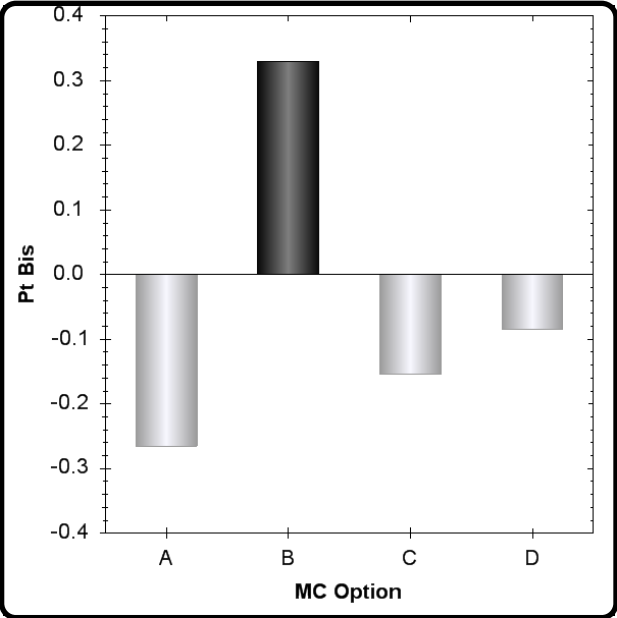
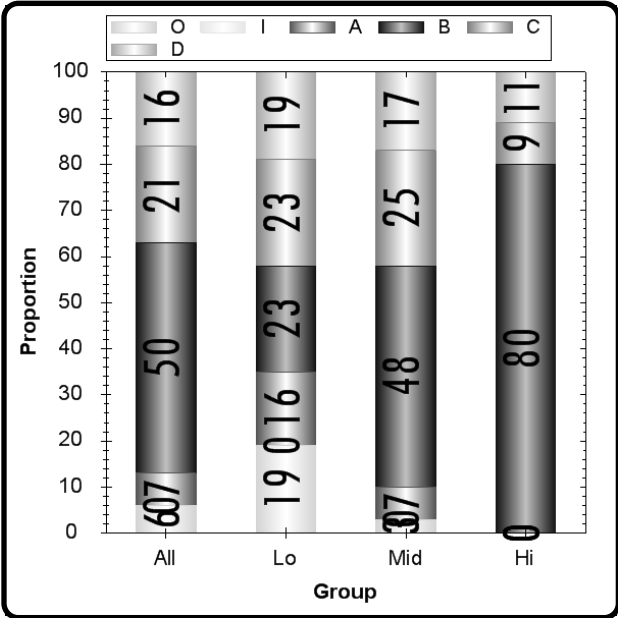
- A** To meet the needs of the county's teachers
- B** To promote the resources and events the library offers
- C** To encourage contributions to the library
- D** To develop the county's literacy skills

Type	Max Points	Key	N Count	Item Mean	Discrimination
Multiple Choice	1	B	2007	0.535	0.330

Rasch Diff	Diff SE	Infit	Outfit
0.743	0.056	1.000	0.980

	A	B	C	D	Omit	Invalid
All	7	50	21	16	6	0
Low Scorers	16	23	23	19	19	0
Middle Scorers	7	48	25	17	3	0
High Scorers	0	80	9	11	0	0

MC Item Option Discriminations			
A	B	C	D
-0.265	0.330	-0.154	-0.084



Notes:

Which activity can be done directly through the Grayson County Public Library's Web site?

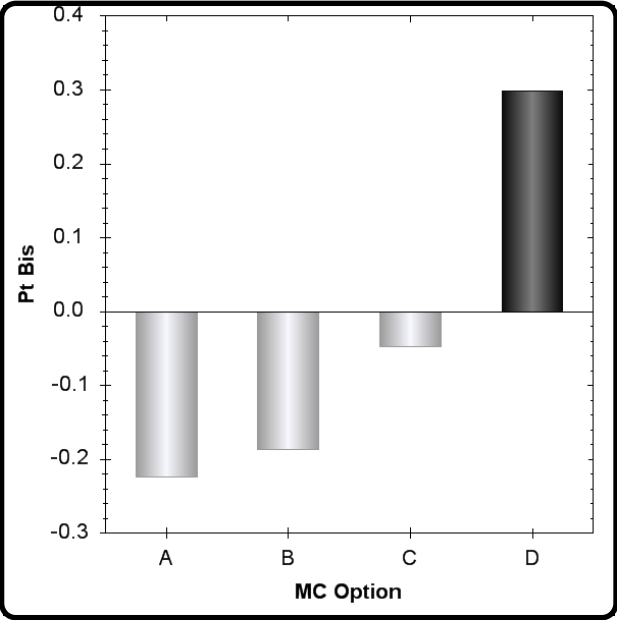
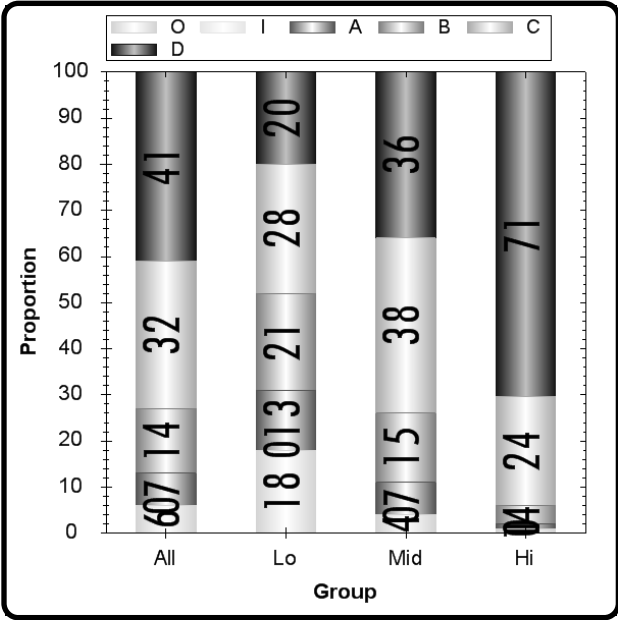
- A** Hearing classic literary favorites read aloud
- B** Learning word processing skills
- C** Applying for a membership card
- D** Checking the status of a library account

Type	Max Points	Key	N Count	Item Mean	Discrimination
Multiple Choice	1	D	2008	0.436	0.299

Rasch Diff	Diff SE	Infit	Outfit
1.259	0.056	1.000	1.030

	A	B	C	D	Omit	Invalid
All	7	14	32	41	6	0
Low Scorers	13	21	28	20	18	0
Middle Scorers	7	15	38	36	4	0
High Scorers	1	4	24	71	1	0

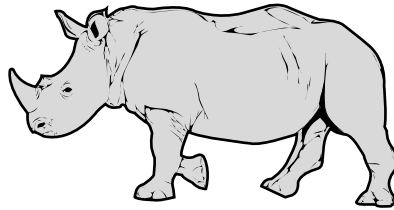
MC Item Option Discriminations			
A	B	C	D
-0.224	-0.187	-0.047	0.299



Notes:

As you read "Watch Out for a Black Rhino" think about how the author uses details to support important ideas about black rhinos.

Watch Out for a Black Rhino



- 1 The only warning of an attack may be a snort and a puff like a steam engine about to rumble out of a train station. In this case, however, the big, black mass happens to be a five-foot-tall, 12-foot-long, 2,500-pound black rhino.
- 2 A black rhino has some very particular qualities. It spends its days wallowing in mud. Now and then, a black rhino uses its huge upper lip to grab a favorite snack of leaves, shoots, flowers or twigs. Although a black rhino does not see very well, its hearing and sense of smell are excellent. If a black rhino whiffs a scent it does not recognize, whether an animal, a person or even a tree, it tends to charge directly toward the unknown smell. A black rhino will even rush nearby rocks if they do not smell familiar. Like a snake or spider, this animal tends to attack first and investigate later. Even other black rhinos may be in the direct line of fire if there is a land dispute or it is mating season.
- 3 The black rhino lives primarily in central and South Africa and comes equipped with two great weapons—the pair of large horns on its nose. These sharp weapons are made of the same type of living skin cells as human fingernails. At times, a black rhino's horn may break like a fingernail, but the horn can grow back.
- 4 A black rhino's horns help it protect itself. For a female black rhino, the horns act as protection for her babies if a lion or hyena makes an unwelcome approach. The horns, coupled with thick skin, help protect a black rhino against other animals in its environment. Few animals are willing to attack an animal this big and brave.
- 5 The biggest threats to a black rhino, as with other endangered animals, are human. Those same horns that help keep a black rhino safe from attack are also quite valuable in some markets. Used to make everything from folk medicine to handles for daggers, a black rhino's horns fetch a surprisingly high price in some parts of the world.

- 6 This demand for horns almost eliminated the black rhino population. In the 1970s its population numbered about sixty thousand. Twenty years later its population had plummeted to just a few thousand. Fortunately, new laws were passed that protect the black rhino, and its population is beginning to increase.

- 7 Black rhinos are returning to central and southern Africa. The increase in number is good news for the black rhino, but the news may not be so great for odd-smelling creatures.

Which sentence from the article best supports the idea that a black rhino is aggressive?

3522388

- A . Now and then, a black rhino uses its huge upper lip to grab a favorite snack of leaves, shoots, flowers or twigs.
- B . A black rhino will even rush nearby rocks if they do not smell familiar.
- C . A black rhino's horns help it protect itself.
- D . The horns, coupled with thick skin, help protect a black rhino against other animals in its environment.

CID: 3522388		READING			Gr7		R.8.E.1		Max Pts: 1		Key: B		
					Multiple Choice				Watch Out for a Black Rhino!				
N Cnt: 545					Mean: 0.738				Corr: 0.380				
	A	B	C	D	Omit	Invalid		MF	WH	WA	SPED	LEP	LUNCH
All	7	73	8	12	1	0	Favor	M					
Low	18	43	20	14	5	0	Flag	High					
Mid	5	75	6	14	0	0	N Ref	296					
High	1	91	2	6	0	0	N Foc	249					

Which sentence from the article best supports the author's belief that a black rhino is brave?

3522391

- A . In this case, however, the big, black mass happens to be a five-foot-tall, 12-foot-long, 2,500-pound black rhino.
- B . Even other black rhinos may be in the direct line of fire if there is a land dispute or it is mating season.
- C . The black rhino lives primarily in central and South Africa, and comes equipped with two great weapons—the pair of large horns on its nose.
- D . For a female black rhino, the horns act as protection for her babies if a lion or hyena makes an unwelcome approach.

CID: 3522391		READING			Gr7		R.8.E.1		Max Pts: 1		Key: D		
					Multiple Choice			Watch Out for a Black Rhino!					
N Cnt: 522					Mean: 0.513			Corr: 0.415					
	A	B	C	D	Omit	Invalid		MF	WH	WA	SPED	LEP	LUNCH
All	14	18	16	51	1	0	Favor						
Low	29	19	30	17	5	0	Flag						
Mid	14	19	17	51	0	0	N Ref						
High	3	18	5	74	0	0	N Foc						

What is the main purpose of Paragraph 1?

3522389

- A . To define a difficult concept to the reader
- B . To describe an unfamiliar scene to the reader
- C . To gain the reader's attention
- D . To change the reader's opinion

CID: 3522389		READING			Gr7		R.8.E.2		Max Pts: 1		Key: C		
					Multiple Choice				Watch Out for a Black Rhino!				
N Cnt: 522					Mean: 0.778				Corr: 0.215				
	A	B	C	D	Omit	Invalid		MF	WH	WA	SPED	LEP	LUNCH
All	4	16	77	2	1	0	Favor						
Low	7	21	63	4	5	0	Flag						
Mid	5	16	76	2	0	0	N Ref						
High	0	11	89	1	0	0	N Foc						

What is the most likely reason why the author includes Paragraph 3?

3522390

- A . To prove a black rhino needs to be helped
- B . To prove there are similarities between a black rhino and people
- C . To describe a fragile part of a black rhino's body
- D . To describe a characteristic of a black rhino's horns

CID: 3522390		READING			Gr7		R.8.E.2		Max Pts: 1		Key: D		
					Multiple Choice			Watch Out for a Black Rhino!					
N Cnt: 522					Mean: 0.504			Corr: 0.236					
	A	B	C	D	Omit	Invalid		MF	WH	WA	SPED	LEP	LUNCH
All	6	24	20	50	1	0	Favor						
Low	10	23	31	30	5	0	Flag						
Mid	7	25	18	50	0	0	N Ref						
High	1	21	14	64	0	0	N Foc						

Read this sentence from the article.

3522385 Few animals are willing to attack an animal this big and brave.

Which other animal shares these characteristics with the rhino?

- A . Sheep
- B . Antelope
- C . Turtle
- D . Bull

CID: 3522385		READING			Gr7		R.8.E.3		Max Pts: 1		Key: D		
					Multiple Choice				Watch Out for a Black Rhino!				
N Cnt: 522					Mean: 0.923				Corr: 0.295				
	A	B	C	D	Omit	Invalid		MF	WH	WA	SPED	LEP	LUNCH
All	2	3	3	91	1	0	Favor						N
Low	6	8	9	71	5	0	Flag						High
Mid	1	3	1	95	0	0	N Ref						314
High	0	0	1	99	0	0	N Foc						208

The elephant is also a large animal found in Africa. Which of the elephant's physical features most relates to the rhino's source of problems in the article?

3522384

- A . Skin
- B . Tusks
- C . Ears
- D . Tail

CID: 3522384		READING			Gr7		R.8.E.3		Max Pts: 1		Key: B		
					Multiple Choice				Watch Out for a Black Rhino!				
N Cnt: 545					Mean: 0.655				Corr: 0.271				
	A	B	C	D	Omit	Invalid		MF	WH	WA	SPED	LEP	LUNCH
All	29	65	3	2	1	0	Favor						
Low	38	45	6	6	5	0	Flag						
Mid	33	62	4	1	0	0	N Ref						
High	16	84	0	1	0	0	N Foc						