



**PAWS  
Reading  
Grade 3**

**Released Items  
With Data**

**2011**

Copyright © **2012** by the Wyoming Department of Education.

All rights reserved. No part of this publication may be reproduced or transmitted in any form or by any means, electronic or mechanical, including photocopy, recording, or any information storage and retrieval system, without permission in writing from the Wyoming Department of Education.

*Pearson* and the *Pearson* logo are trademarks, in the U.S. and/or other countries, of Pearson Education, Inc. or its affiliate(s).

Portions of this work were previously published.

Printed in the United States of America.



## Animal Builders



- 1 People build houses for birds, dogs, and even bats. Most animals, however, can build their own homes. Many animals build homes for themselves or their offspring. You can spot many homes made by animals just by taking a walk outside.
- 2 Spider webs are easy to find. Spiders spin webs in trees, on the ground, and even in your home. There are many kinds of spider webs. Orb spiders spin beautiful spiral webs. They spend a lot of time preparing their designs. Funnel spiders make webs that look like birds' nests. The funnels have big openings so the spiders can catch their prey. Spiders also spin webs around their eggs. These webs protect the eggs.
- 3 Ants are tiny, busy builders. Some ants build nests underground. Ants tunnel through the ground. They carry the dirt out of their tunnel. The mounds of soil and sand that form outside the nest entrances are called "anthills." You can find anthills almost any place where there is dirt.
- 4 The beaver may be the best-known animal builder of all. Beavers live near water. They have teeth like an ax. To cut trees down, beavers gnaw all the way around a tree trunk. They drag the fallen tree away to build a lodge or dam. Beavers weave logs and branches together. These smart builders even use mud to stick rocks together when building.
- 5 A bird's nest is a common sight in trees. Most birds build nests on the tops of branches. Orioles are a little different. Oriole nests hang below tree branches. The female picks up long pieces of bark, grass, hair, or string. She attaches both ends of the pieces she chooses to a branch. The "ropes" hang off the branch in loops. The oriole can then gather leaves, twigs, or grass to weave on the ropes. Finally, she lines the nest with soft pieces of fur or feathers. The nest looks like a hanging basket.

- 6        Animals find all sorts of places to build their homes. They use many different materials. Squirrels use leaves to build nests high in treetops. Muskrats live near water, and they build lodges out of cattails and grasses. Moths and butterflies spin cocoons, a protective web covering, out of silk. They can spin them on the ground, in a tree, or around a curled leaf. Take a walk, and you can find an animal's home in your area.

3338657

**00** Which animal makes a home that looks like a bird's nest?

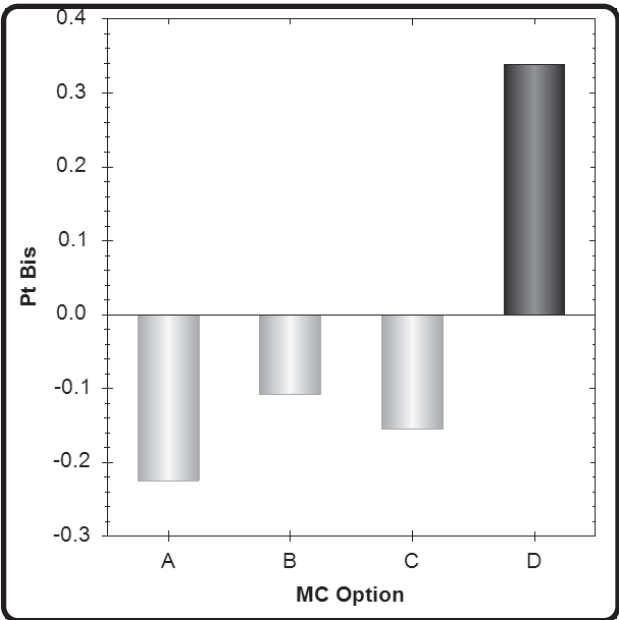
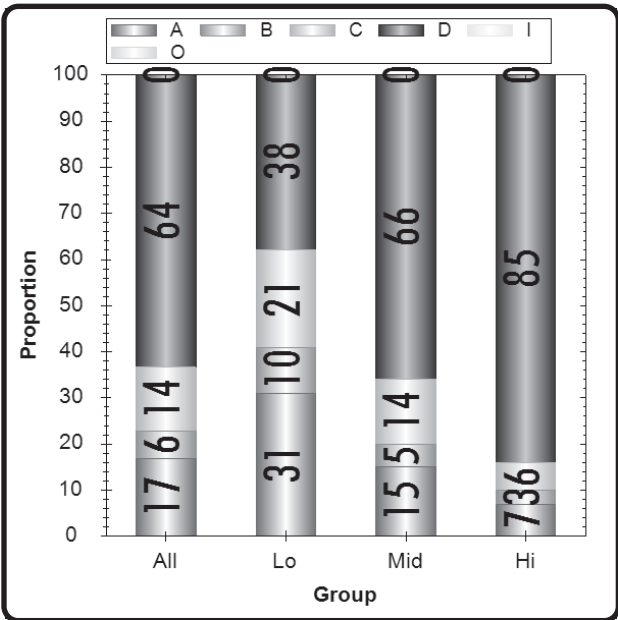
- Ⓐ A beaver
- Ⓑ A butterfly
- Ⓒ A muskrat
- Ⓓ A funnel spider

Grade 3 Item # 10	Reading OP10	CID 3338657 R.03.E.1
Psg : Animal Builders		

Type	Max Points	Correct Answer	N Count	Item Mean	Discrimination
Multiple Choice	1	D	6544	0.640	0.339

	A	B	C	D	Inv	Omit
All	17	6	14	64	0	0
Low Scorers	31	10	21	38	0	0
Middle Scorers	15	5	14	66	0	0
High Scorers	7	3	6	85	0	0

MC Item Option Discriminations			
A	B	C	D
-0.225	-0.108	-0.155	0.339



Notes:

3338660

**00** Which animals tunnel through the ground when building their home?

- Ⓐ Ants
- Ⓑ Beavers
- Ⓒ Orioles
- Ⓓ Spiders

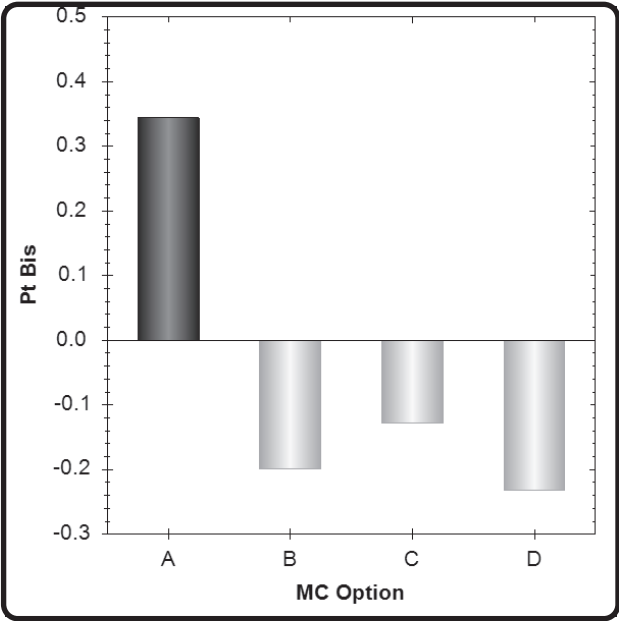
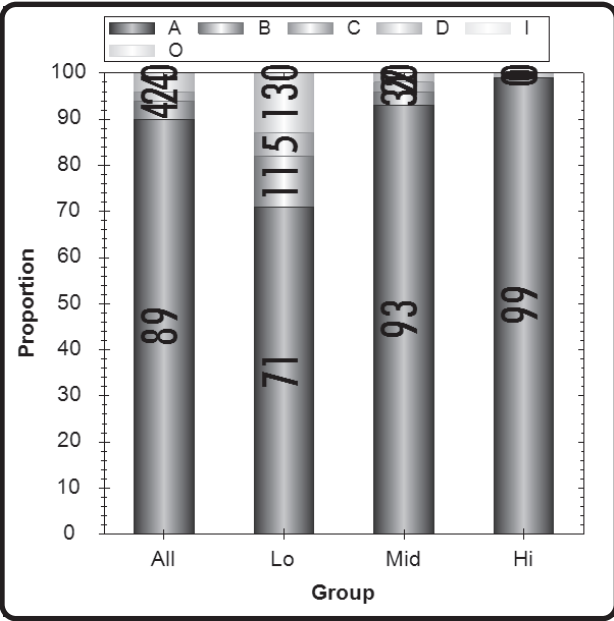


**Grade 3** **Reading** **CID 3338660**  
**Item # 7** **OP10** **R.03.E.1**  
**Psg : Animal Builders**

Type	Max Points	Correct Answer	N Count	Item Mean	Discrimination
Multiple Choice	1	A	6544	0.890	0.344

	A	B	C	D	Inv	Omit
All	89	4	2	4	0	0
Low Scorers	71	11	5	13	0	0
Middle Scorers	93	3	2	2	0	0
High Scorers	99	0	0	1	0	0

MC Item Option Discriminations			
A	B	C	D
0.344	-0.199	-0.128	-0.232



Notes:

3338647

**00** Which animal weaves logs and branches together?

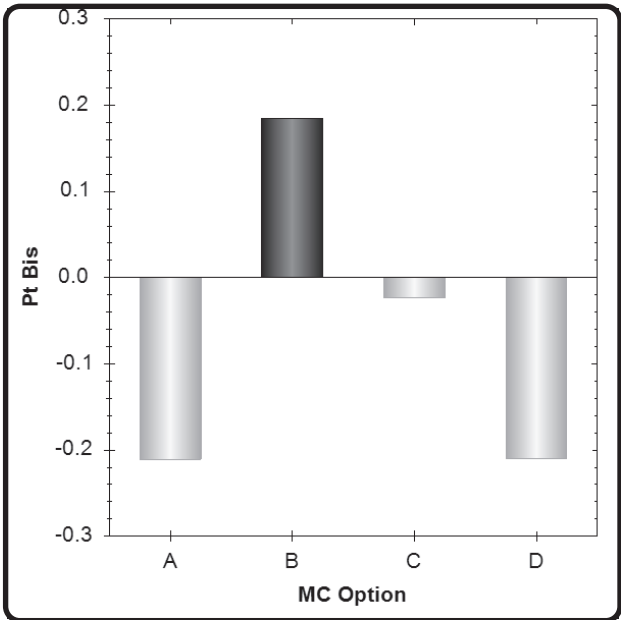
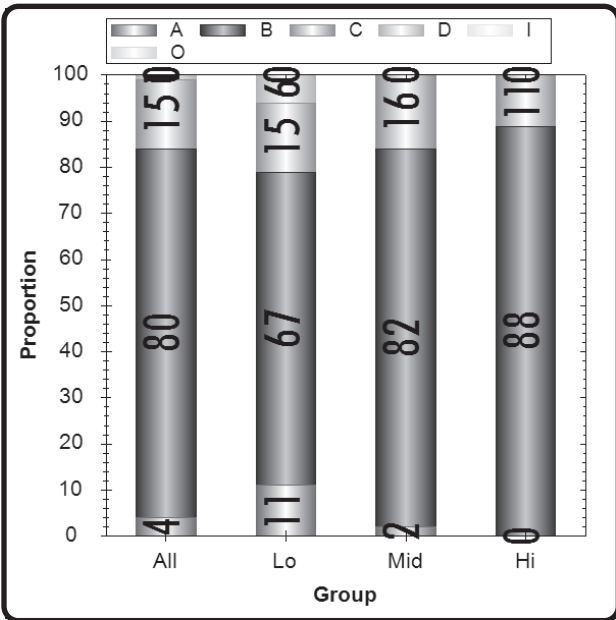
- Ⓐ The spider
- Ⓑ The beaver
- Ⓒ The oriole
- Ⓓ The ant

Grade 3 Item # 11	Reading OP10 Psg : Animal Builders	CID 3338647 R.03.E.1
----------------------	--	-------------------------

Type	Max Points	Correct Answer	N Count	Item Mean	Discrimination
Multiple Choice	1	B	6544	0.800	0.185

	A	B	C	D	Inv	Omit
All	4	80	15	1	0	0
Low Scorers	11	67	15	6	0	0
Middle Scorers	2	82	16	0	0	0
High Scorers	0	88	11	0	0	0

MC Item Option Discriminations			
A	B	C	D
-0.211	0.185	-0.023	-0.210



Notes:

3338720

**00** Which animal home can most people find near their homes?

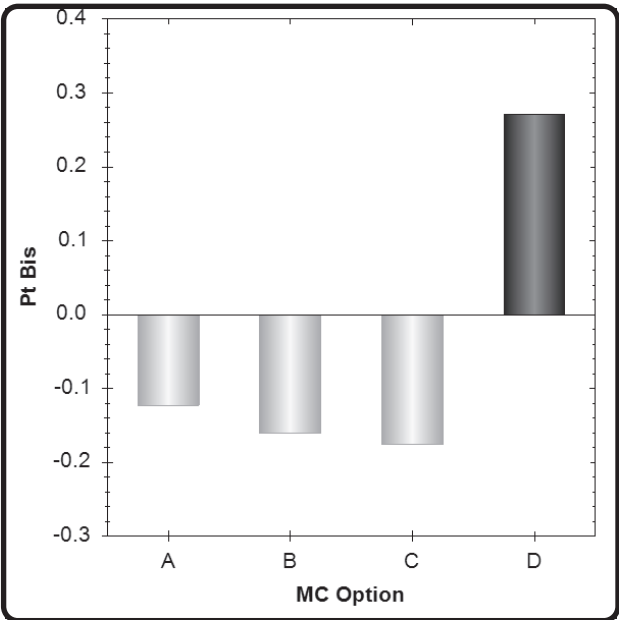
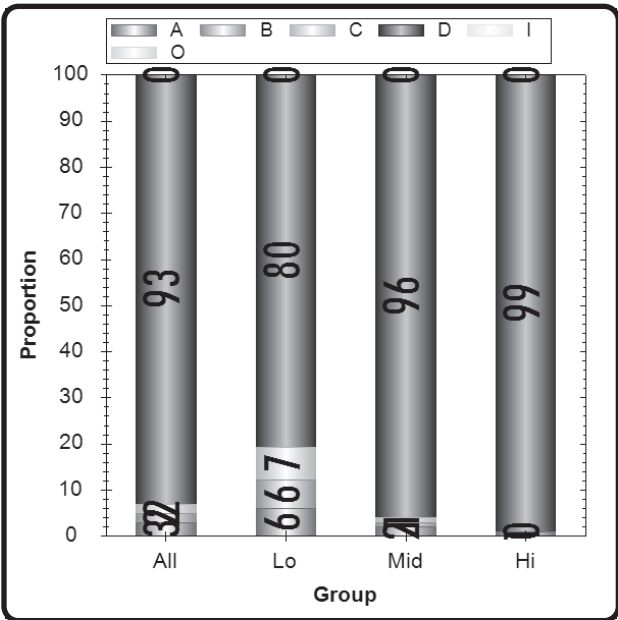
- Ⓐ Muskrat's lodge
- Ⓑ Beaver's lodge
- Ⓒ Bat's cave
- Ⓓ Bird's nest

**Grade 3** **Reading** **CID 3338720**  
**Item # 12** **OP10** **R.03.E.3**  
**Psg : Animal Builders**

Type	Max Points	Correct Answer	N Count	Item Mean	Discrimination
Multiple Choice	1	D	6544	0.930	0.271

	A	B	C	D	Inv	Omit
All	3	2	2	93	0	0
Low Scorers	6	6	7	80	0	0
Middle Scorers	2	1	1	96	0	0
High Scorers	1	0	0	99	0	0

MC Item Option Discriminations			
A	B	C	D
-0.123	-0.161	-0.176	0.271



Notes:

3338643

**00** Which sentence best describes the main idea of the passage?

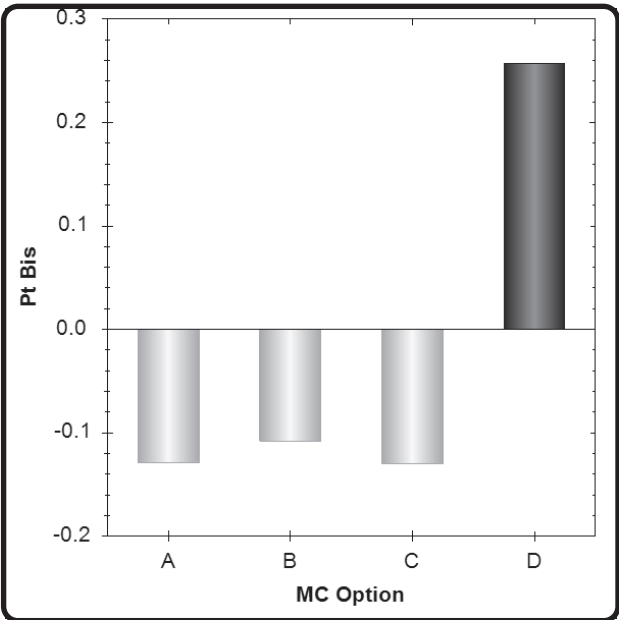
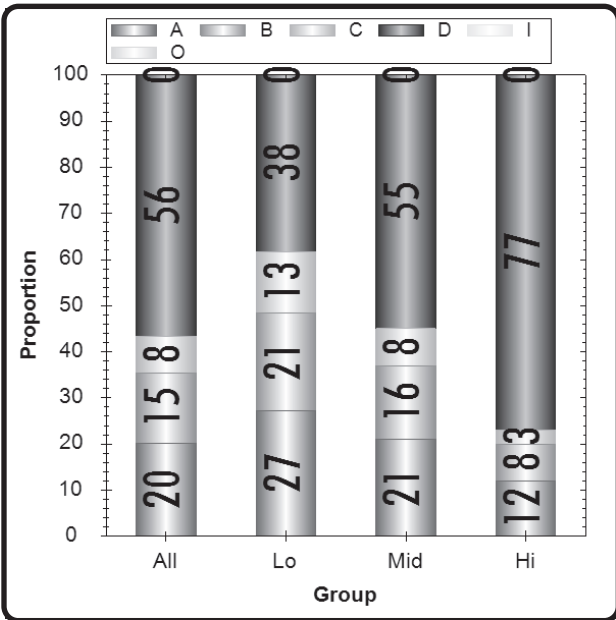
- Ⓐ Animals take a lot of time to build homes.
- Ⓑ Animals work hard together to build their homes.
- Ⓒ Some animals build the same types of homes as other animals.
- Ⓓ Many animals build their own homes.

Grade 3 Item # 14	Reading OP10 Psg : Animal Builders	CID 3338643 R.03.E.1
----------------------	--	-------------------------

Type	Max Points	Correct Answer	N Count	Item Mean	Discrimination
Multiple Choice	1	D	6544	0.560	0.257

	A	B	C	D	Inv	Omit
All	20	15	8	56	0	0
Low Scorers	27	21	13	38	0	0
Middle Scorers	21	16	8	55	0	0
High Scorers	12	8	3	77	0	0

MC Item Option Discriminations			
A	B	C	D
-0.129	-0.108	-0.130	0.257



Notes:

3338738

**00** How are people and beavers alike?

- Ⓐ They both have to build homes for others.
- Ⓑ They both use mud and sticks to build their homes.
- Ⓒ They both cut down trees to build homes.
- Ⓓ They both have to build their homes near water.

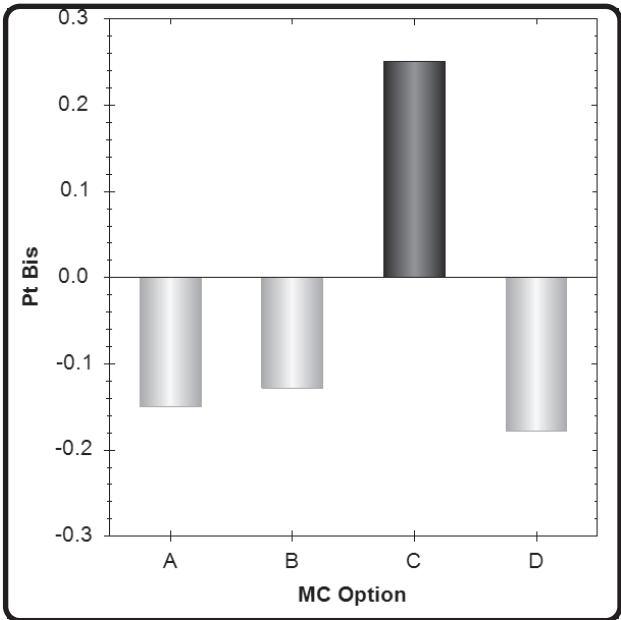
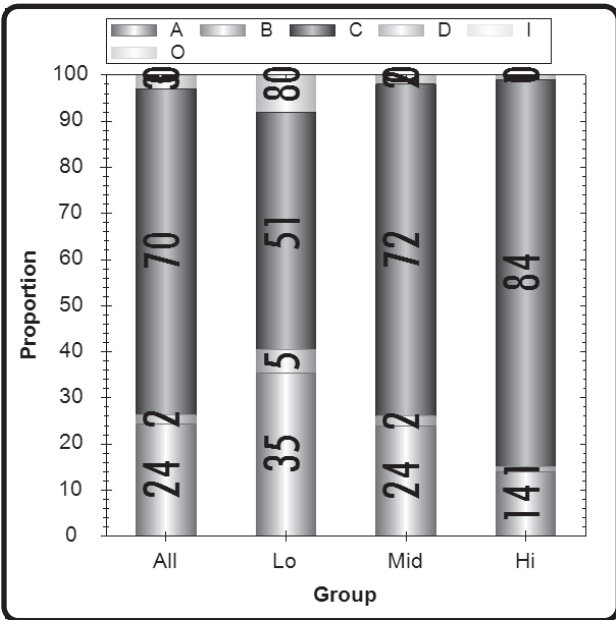


**Grade 3** **Reading** **CID 3338738**  
**Item # 13** **OP10** **R.03.E.3**  
**Psg : Animal Builders**

Type	Max Points	Correct Answer	N Count	Item Mean	Discrimination
Multiple Choice	1	C	6544	0.700	0.251

	A	B	C	D	Inv	Omit
All	24	2	70	3	0	0
Low Scorers	35	5	51	8	0	0
Middle Scorers	24	2	72	2	0	0
High Scorers	14	1	84	1	0	0

MC Item Option Discriminations			
A	B	C	D
-0.150	-0.128	0.251	-0.178



Notes:

3338667



**How are spiders and butterflies alike? Use details from the passage to support your answer.**

---

---

---

---

---

---

---

---

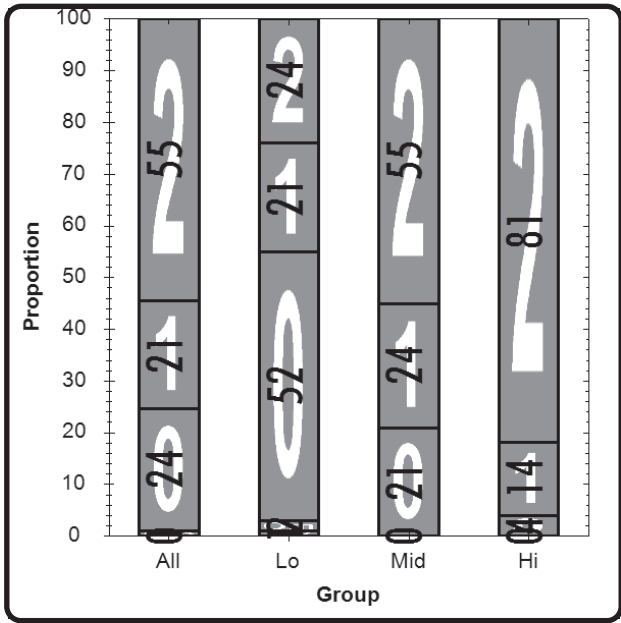
---

---

Grade 3 Reading CID 3338667  
 Item # 57 OP08 R.03.E.1  
 Psg : Animal Builders

Type Max Points N Count Item Mean Discrimination  
 Short Response 2 6400 1.302 0.436

	0	1	2	Inv	Omit
All	24	21	55	0	1
Low Scorers	52	21	24	1	2
Middle Scorers	21	24	55	0	0
High Scorers	4	14	81	0	0



Notes:

8

Spiders and butterflies  
are like because  
a spider usually  
builds it's home  
in a tree.  
A butterfly usually  
does the same thing

Score 2

The student provided main ideas and details (. . . *a spider usually builds it's home in a tree. A butterfly usually does the same thing*) from the passage that are accurate and logically connected to the task of explaining how spiders and butterflies are alike. The main ideas and details are sufficient to support the reader's position.



<sup>8</sup> They both spen stuff

**Score 1**

**The main idea provided by the student (. . . *they both spen (spin) stuff*) is generally accurate, but is insufficient to explain how spiders and butterflies are alike because the student does not explain what spiders and butterflies spin.**

<sup>8</sup> Spiders and butterflies are alike because they both have tons of different kinds of itself. Like for spiders theres a black widow, wolf spider, the jumping spider. All those different kind.

Score 0

The student's response does not address the task of explaining how spiders and butterflies are alike because the information provided (. . . *they both have tons of different kinds . . . black widow, wolf spider, the jumping spider*) is not text-based.



