



**PAWS
Reading
Grade 6**

**Released Items
With Data**

2010

Copyright © **2011** by the Wyoming Department of Education.

All rights reserved. No part of this publication may be reproduced or transmitted in any form or by any means, electronic or mechanical, including photocopy, recording, or any information storage and retrieval system, without permission in writing from the Wyoming Department of Education.

Pearson and the *Pearson* logo are trademarks, in the U.S. and/or other countries, of Pearson Education, Inc. or its affiliate(s).

Portions of this work were previously published.

Printed in the United States of America.

Bakery Zone Grand Opening!

Lincoln Middle School cafeteria is now offering the best in healthful baked goods. Breads, muffins, and other treats made with fresh, whole grains and less sugar help us to stay healthy. Students may now request baked goods made by cafeteria staff in our own school kitchen. All goods offered are free of unhealthy additives and preservatives. Attached is an order form with the menu of baked goods the Lincoln Middle School cafeteria serves and the days the items are available. See your homeroom teacher for additional order forms.

Enjoy free samples of the healthful baked goods on October 3 during each lunch period. Samples of all baked goods on the order form will be available. Come hungry. Students may begin placing orders for baked goods with their homeroom teachers after October 3. If you have questions about the form, ask your homeroom teacher.

Bakery purchase totals will be deducted from lunch accounts each Monday after orders are received. Baked goods will be packaged and available for pickup at the cashier station.

October Specials

Purchase two muffins in one week and the third one is free.

Purchase one whole-wheat tortilla and receive one free.

Bakery Zone Order Form

(Return form to homeroom teacher each Friday.)

Name _____ Homeroom # _____

Week of _____ Teacher _____

Grade _____ Lunch Period _____

Lunch ID Number _____

Prices reflect a single serving.

Breads and Rolls (available daily for breakfast and lunch)

- White Bread (made with unbleached flour) \$0.25
- Health-Wise Whole-Grain Bread (made with whole-grain flour) \$0.25
- Whole-Wheat Roll (made with whole-grain flour) \$0.25

Breakfast Breads

- Oatmeal-Raisin Bread (daily) \$0.25
- Low-Fat Whole-Wheat Bagel (Monday, Wednesday, Friday) \$0.75
- Low-Fat Whole-Wheat Tortilla (Wednesday) \$0.25
- Low-Fat Muffin \$0.75
 - Banana-Walnut (daily)
 - Blueberry (daily)
 - Cranberry-Orange (Monday, Wednesday, Friday)

Desserts (available daily for lunch)

- All-Natural Cheesecake (with fresh, seasonal fruit) \$1.25
- Low-Sugar Cinnamon Roll (honey-sweetened) \$1.00
- Cupcake (made from whole-grain flour, honey, and real fruit) \$0.75

Sandwiches (available daily for lunch)

- Turkey Burger on a Whole-Wheat Bun \$1.50
- Whole-Grain Pita Pocket Veggie Sandwich \$1.50

	<u>Breakfast</u>			<u>Lunch</u>		
	Item	Quantity	Cost	Item	Quantity	Cost
Monday	_____			_____		
Tuesday	_____			_____		
Wednesday	_____			_____		
Thursday	_____			_____		
Friday	_____			_____		

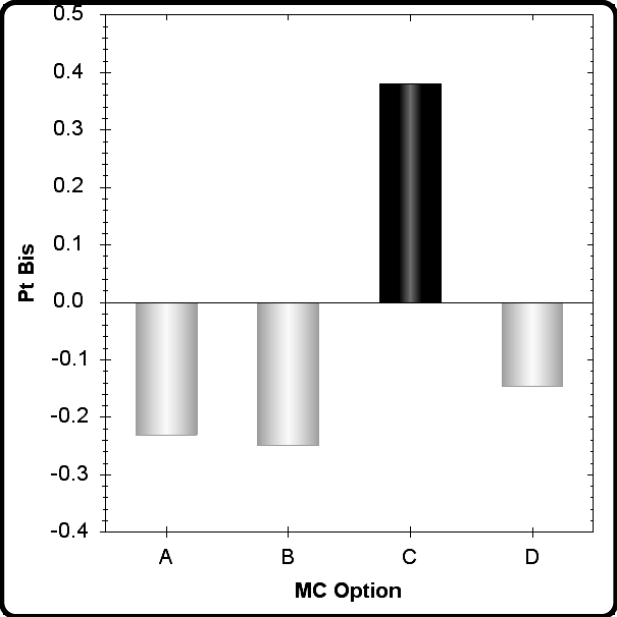
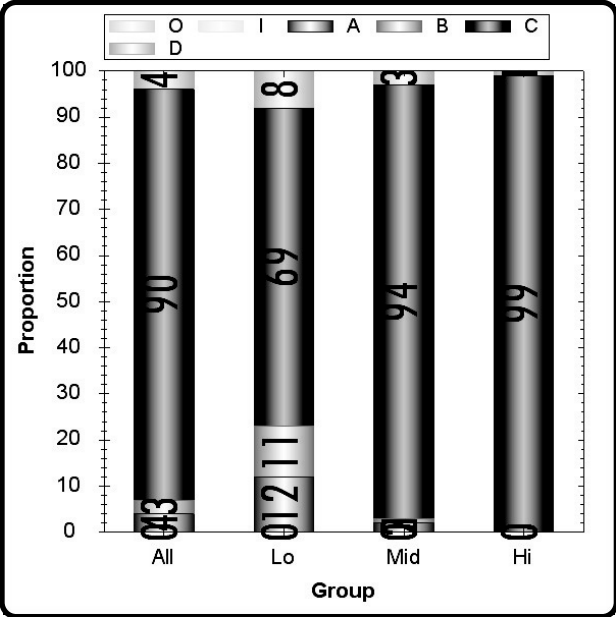
According to the advertisement, why is Lincoln Middle School adding Bakery Zone to its cafeteria services?

- A.** To encourage students to place food orders in advance
- B.** To decrease the amount of time students spend in the lunch line
- C.** To provide students healthy food selections made with whole grains and less sugar
- D.** To teach students how to make foods free of additives and preservatives

Type	Max Points	Correct Answer	N Count	Item Mean	Discrimination
Multiple Choice	1	C	6556	0.900	0.380

	A	B	C	D	Omit	Invalid
All	4	3	90	4	0	0
Low Scorers	12	11	69	8	0	0
Middle Scorers	2	1	94	3	0	0
High Scorers	0	0	99	1	0	0

MC Item Option Discriminations			
A	B	C	D
-0.231	-0.249	0.380	-0.146



Notes:

Non SPED students may perform better on this item as compared to SPED students. (B)

3416135

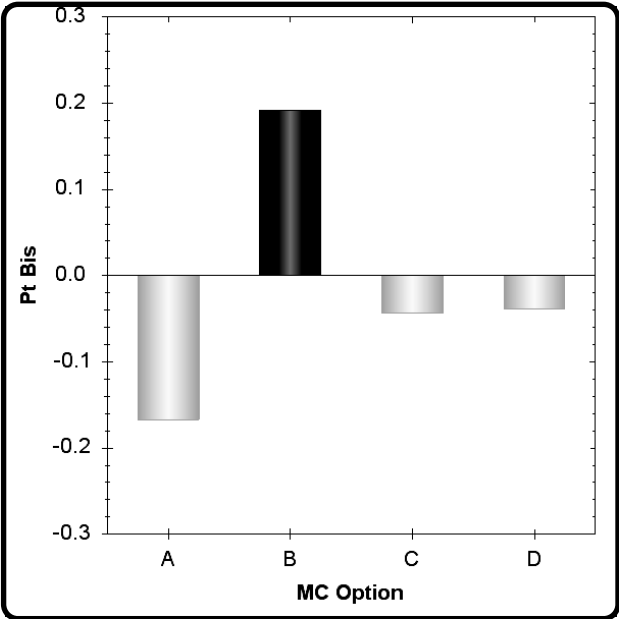
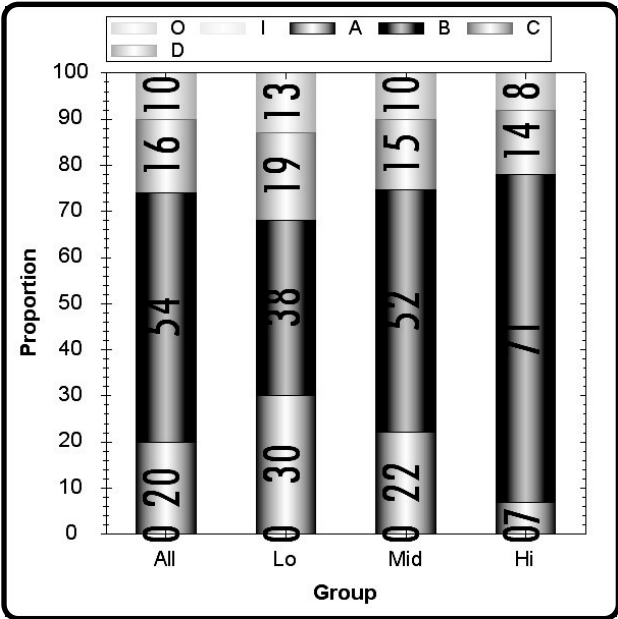
Which feature of the Bakery Zone does the advertisement most emphasize?

- A.** The low costs of foods served
- B.** The kinds of foods offered
- C.** The convenience of foods served
- D.** The simple payment method

Type	Max Points	Correct Answer	N Count	Item Mean	Discrimination
Multiple Choice	1	B	6285	0.537	0.192

	A	B	C	D	Omit	Invalid
All	20	54	16	10	0	0
Low Scorers	30	38	19	13	0	0
Middle Scorers	22	52	15	10	0	0
High Scorers	7	71	14	8	0	0

MC Item Option Discriminations			
A	B	C	D
-0.167	0.192	-0.043	-0.039



Notes:

3416121

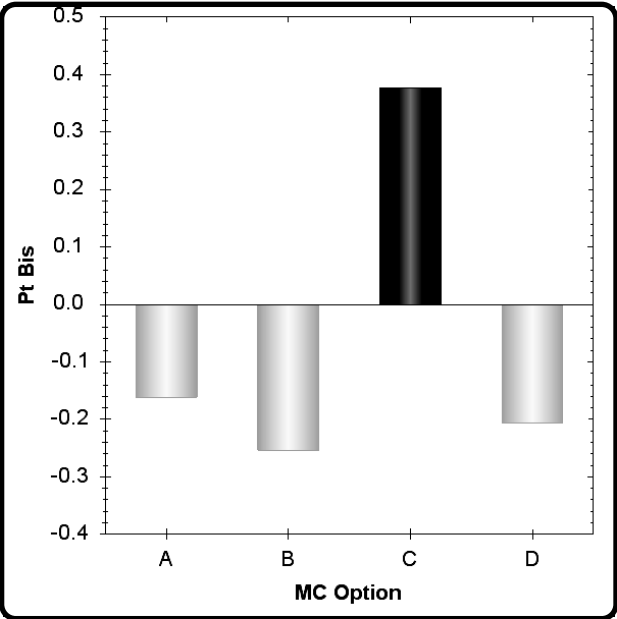
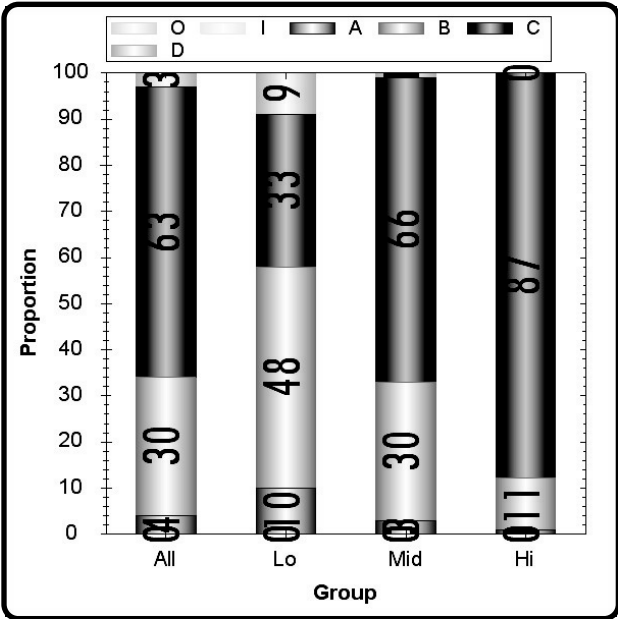
According to the advertisement, when may students start placing orders?

- A.** On Friday morning
- B.** On October 3
- C.** After October 3
- D.** During lunch on Friday

Type	Max Points	Correct Answer	N Count	Item Mean	Discrimination
Multiple Choice	1	C	6377	0.634	0.377

	A	B	C	D	Omit	Invalid
All	4	30	63	3	0	0
Low Scorers	10	48	33	9	0	0
Middle Scorers	3	30	66	1	0	0
High Scorers	1	11	87	0	0	0

MC Item Option Discriminations			
A	B	C	D
-0.162	-0.254	0.377	-0.206



Notes:

3416122

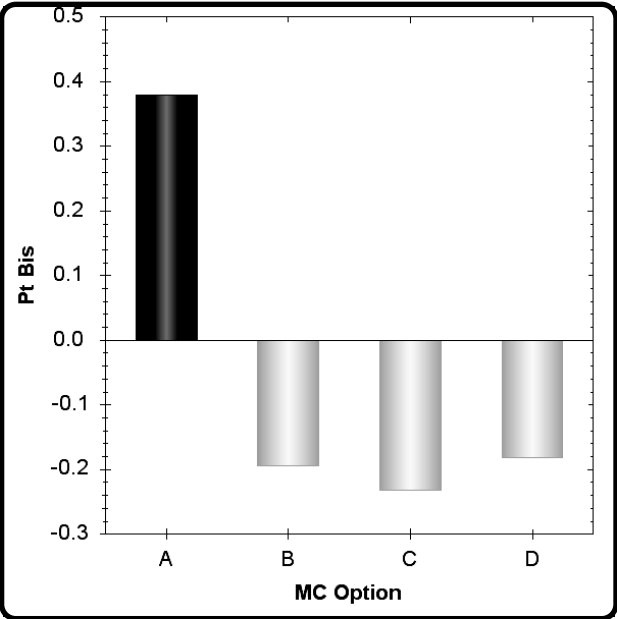
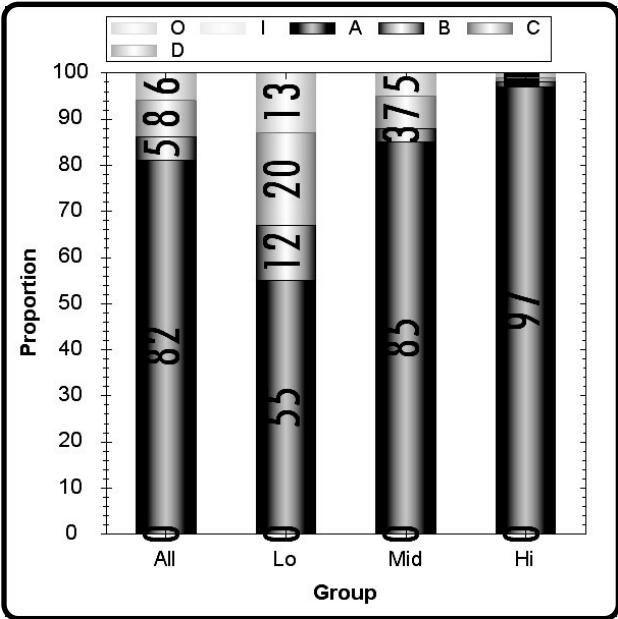
On which day are payments for baked goods deducted from students' lunch accounts?

- A.** Monday
- B.** Tuesday
- C.** Wednesday
- D.** Thursday

Type	Max Points	Correct Answer	N Count	Item Mean	Discrimination
Multiple Choice	1	A	6556	0.820	0.380

	A	B	C	D	Omit	Invalid
All	82	5	8	6	0	0
Low Scorers	55	12	20	13	0	0
Middle Scorers	85	3	7	5	0	0
High Scorers	97	1	1	1	0	0

MC Item Option Discriminations			
A	B	C	D
0.380	-0.194	-0.232	-0.182



Notes:

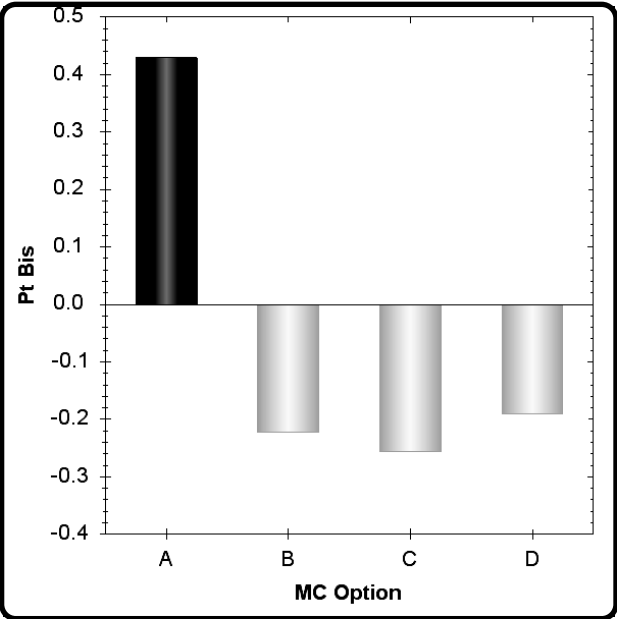
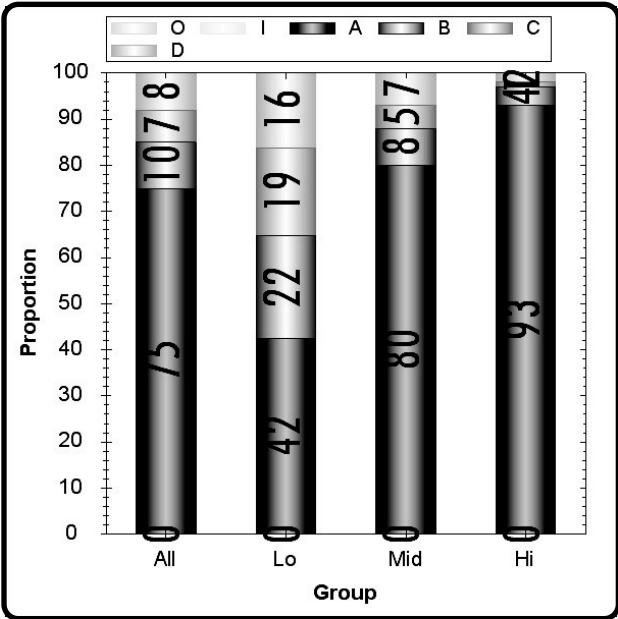
Which information is probably least important for a student to include when explaining the service to a parent or guardian?

- A.** How the baked goods are packaged
- B.** What ingredients are used in the baked goods
- C.** How much the baked goods cost
- D.** How to purchase the baked goods

Type	Max Points	Correct Answer	N Count	Item Mean	Discrimination
Multiple Choice	1	A	6556	0.750	0.429

	A	B	C	D	Omit	Invalid
All	75	10	7	8	0	0
Low Scorers	42	22	19	16	0	0
Middle Scorers	80	8	5	7	0	0
High Scorers	93	4	1	2	0	0

MC Item Option Discriminations			
A	B	C	D
0.429	-0.223	-0.256	-0.190



Notes:

White students may perform better on this item as compared to Am. Indian students. (C)

3416131

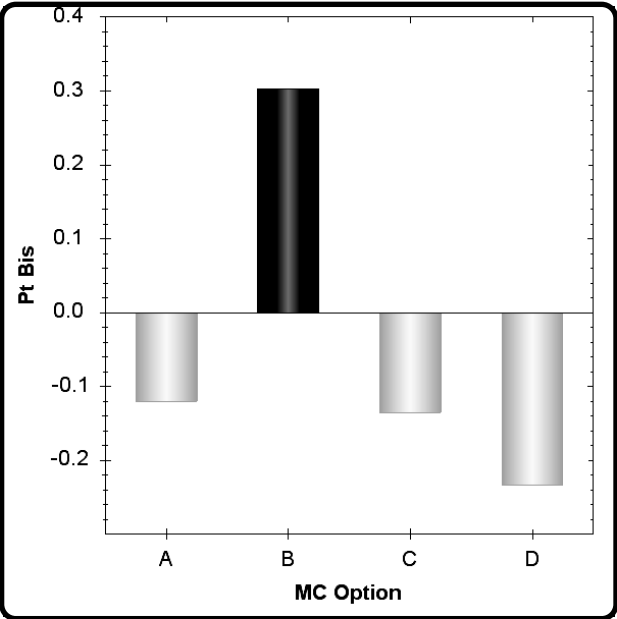
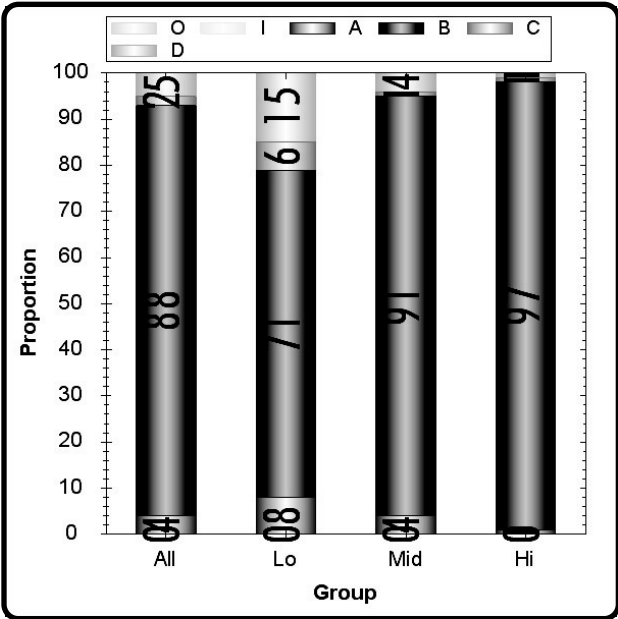
If a student does not like sweets, which bakery item would be the best choice?

- A.** All-Natural Cheesecake
- B.** Whole-Wheat Roll
- C.** Cupcake
- D.** Low-Sugar Cinnamon Roll

Type	Max Points	Correct Answer	N Count	Item Mean	Discrimination
Multiple Choice	1	B	6556	0.880	0.303

	A	B	C	D	Omit	Invalid
All	4	88	2	5	0	0
Low Scorers	8	71	6	15	0	0
Middle Scorers	4	91	1	4	0	0
High Scorers	1	97	1	1	0	0

MC Item Option Discriminations			
A	B	C	D
-0.120	0.303	-0.135	-0.233



Notes:

White students may perform better on this item as compared to Hispanic students. (B)

White students may perform better on this item as compared to Am. Indian students. (B)

3416136

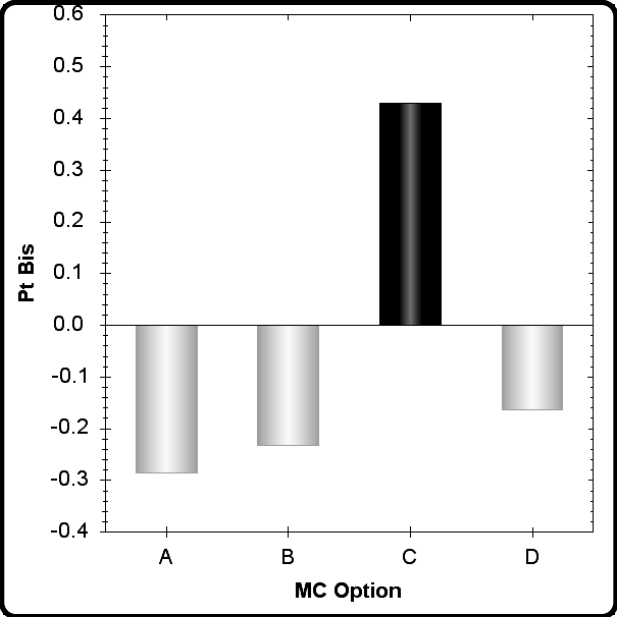
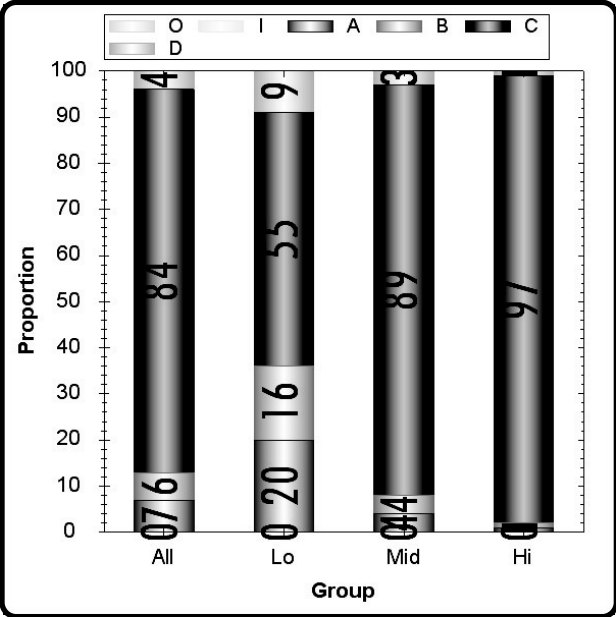
Based on the advertisement, what is the difference between the Bakery Zone's White Bread and Health-Wise Whole-Grain Bread?

- A.** Serving size
- B.** Cost per serving
- C.** Ingredients
- D.** Availability

Type	Max Points	Correct Answer	N Count	Item Mean	Discrimination
Multiple Choice	1	C	6556	0.840	0.430

	A	B	C	D	Omit	Invalid
All	7	6	84	4	0	0
Low Scorers	20	16	55	9	0	0
Middle Scorers	4	4	89	3	0	0
High Scorers	1	1	97	1	0	0

MC Item Option Discriminations			
A	B	C	D
-0.286	-0.232	0.430	-0.164



Notes:
 Non SPED students may perform better on this item as compared to SPED students. (B)

3416129

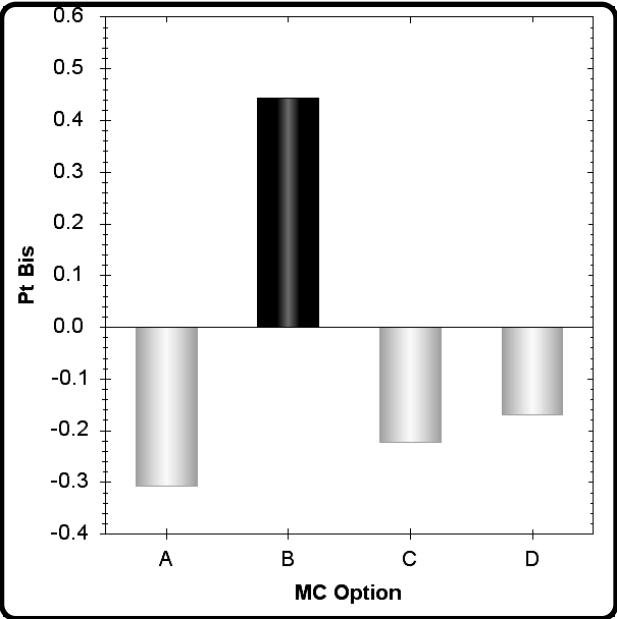
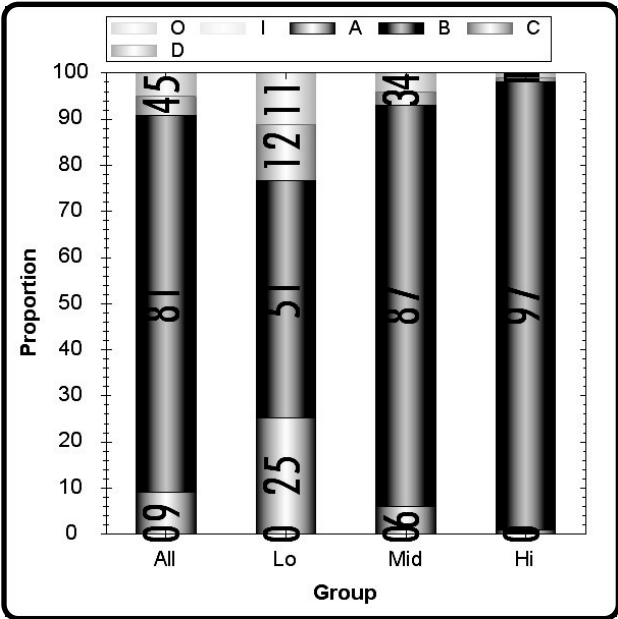
According to the advertisement, which bakery item contains honey?

- A.** Banana-Walnut Muffin
- B.** Cupcake
- C.** Cranberry-Orange Muffin
- D.** Cheesecake

Type	Max Points	Correct Answer	N Count	Item Mean	Discrimination
Multiple Choice	1	B	6556	0.810	0.444

	A	B	C	D	Omit	Invalid
All	9	81	4	5	0	0
Low Scorers	25	51	12	11	0	0
Middle Scorers	6	87	3	4	0	0
High Scorers	1	97	1	1	0	0

MC Item Option Discriminations			
A	B	C	D
-0.308	0.444	-0.222	-0.170



Notes:

3416132

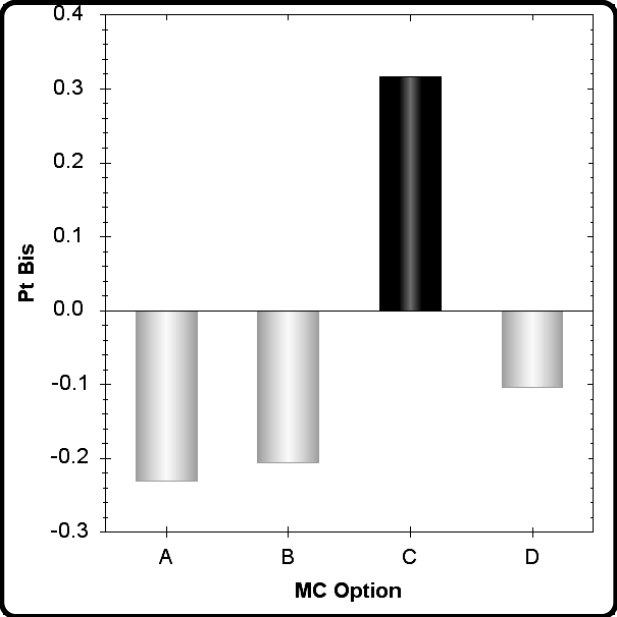
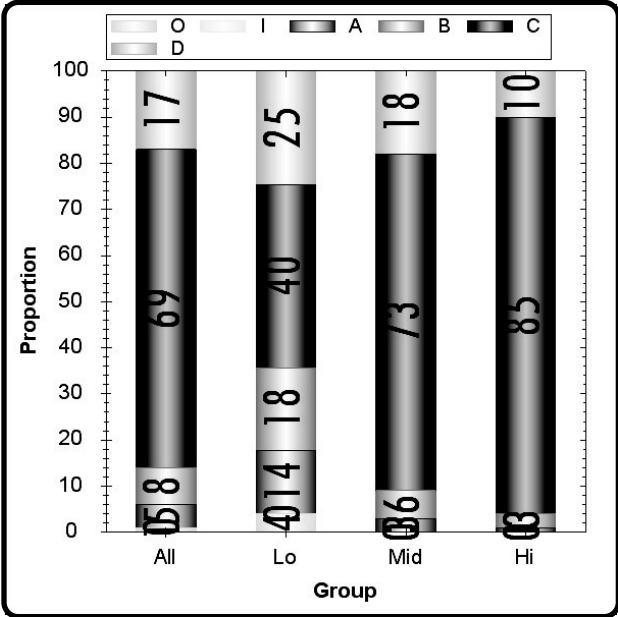
Which of these should students be able to do if they are interested in ordering baked goods?

- A.** Decide when to bring a sack lunch from home
- B.** Predict which baked goods will be their favorites
- C.** Fill out an order form and turn it in on time
- D.** Order baked goods for breakfast and lunch

Type	Max Points	Correct Answer	N Count	Item Mean	Discrimination
Multiple Choice	1	C	3976	0.697	0.317

	A	B	C	D	Omit	Invalid
All	5	8	69	17	1	0
Low Scorers	14	18	40	25	4	0
Middle Scorers	3	6	73	18	0	0
High Scorers	1	3	85	10	0	0

MC Item Option Discriminations			
A	B	C	D
-0.231	-0.206	0.317	-0.104



Notes:

How is the information on the Bakery Zone Order Form helpful to students who want to place an order?

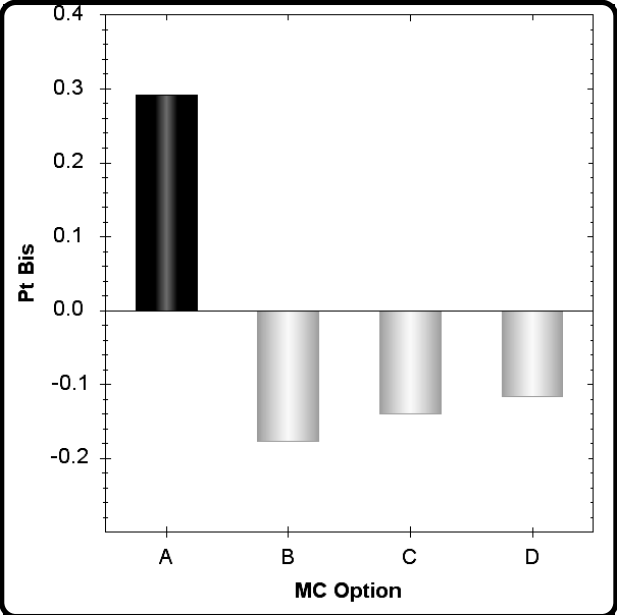
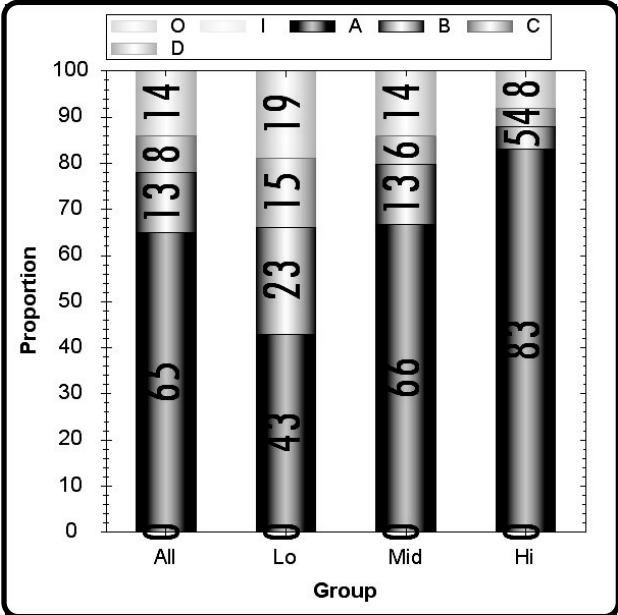
- A.** It provides a list of available baked goods.
- B.** It describes the benefits of eating baked goods.
- C.** It explains the details of the Grand Opening.
- D.** It informs students of items offered at special savings.

Grade 6 Reading CID 3416126
 Item # 19 R.06.F.1
 Psg : Bakery Zone Grand Opening!_BZ OP10

Type Max Points Correct Answer N Count Item Mean Discrimination
 Multiple Choice 1 A 6556 0.650 0.292

	A	B	C	D	Omit	Invalid
All	65	13	8	14	0	0
Low Scorers	43	23	15	19	0	0
Middle Scorers	66	13	6	14	0	0
High Scorers	83	5	4	8	0	0

MC Item Option Discriminations			
A	B	C	D
0.292	-0.177	-0.140	-0.117



Notes:

3416127

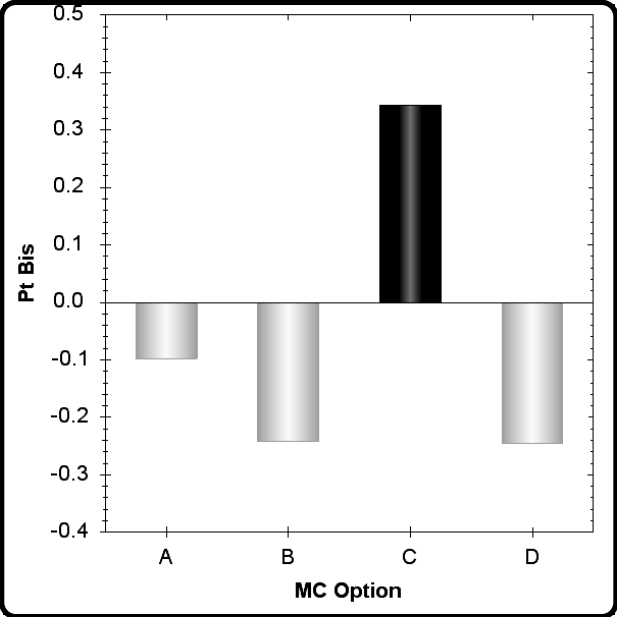
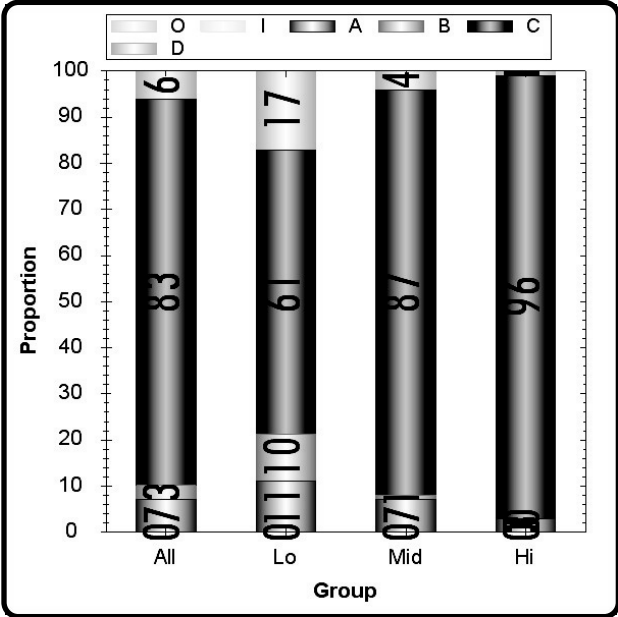
According to the advertisement, who collects Bakery Zone Order Forms?

- A.** Cashiers
- B.** Students
- C.** Homeroom teachers
- D.** Cafeteria staff

Type	Max Points	Correct Answer	N Count	Item Mean	Discrimination
Multiple Choice	1	C	6556	0.830	0.343

	A	B	C	D	Omit	Invalid
All	7	3	83	6	0	0
Low Scorers	11	10	61	17	0	0
Middle Scorers	7	1	87	4	0	0
High Scorers	3	0	96	1	0	0

MC Item Option Discriminations			
A	B	C	D
-0.098	-0.242	0.343	-0.245



Notes:

3417326

Explain why the cupcakes listed on the Bakery Zone order form are a healthy food choice. Use information from the advertisement for support.

Grade 6

Reading

CID 3417326

Item # 21

R.06.F.1

Psg : Bakery Zone Grand Opening!_BZ

OP07

Type
SR

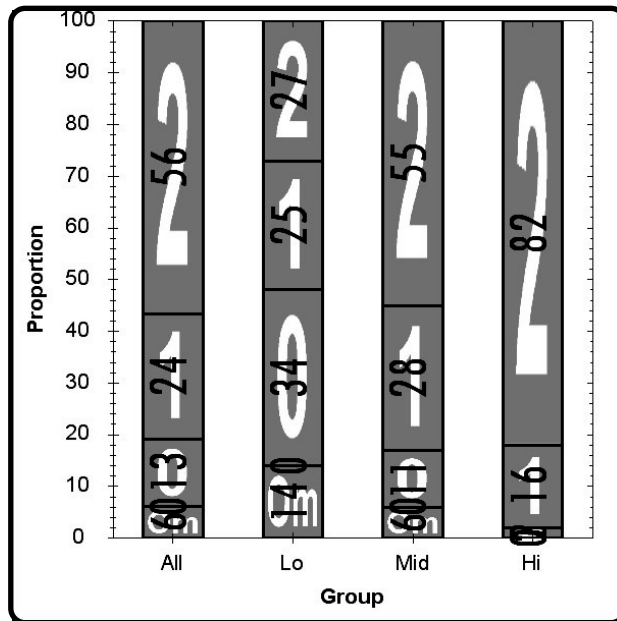
Max Points
2

N Count
3758

Item Mean
1.454

Discrimination
0.384

	0	1	2	Omit	Invalid
All	13	24	56	6	0
Low Scorers	34	25	27	14	0
Middle Scorers	11	28	55	6	0
High Scorers	2	16	82	0	0



Notes:

- 3 Explain why the cupcakes listed on the Bakery Zone order form are a healthy food choice. Use information from the advertisement for support.

Cupcakes are healthy because of the ingredients. The cupcakes are made from whole grain flour, honey, and real fruits. All of these ingredients are healthy. Also, these cupcakes would have less sugar in them than cupcakes you would buy from the store.

Paper 1
Score Point 2

The response uses relevant details from the passage (. . . *made from whole grain flour, honey, and real fruits . . . less sugar*) to support the reader's explanation of why the cupcakes are a healthy food choice (. . . *all of these ingredients are healthy, less sugar in them than cupcakes you would buy from the store*). All of the information presented is logical, relevant and sufficient to support the reader's position.

3 Explain why the cupcakes listed on the Bakery Zone order form are a healthy food choice. Use information from the advertisement for support.

The cupcakes are healthy because they use hole grain and real fruit.

Paper 2

Score Point 1

The response uses some of the relevant details from the passage (. . . *they use hole grain and real fruit*) to explain why the cupcakes are a healthy food. All of the information presented is logical and relevant, but is insufficient to support the reader's position.

- 3 Explain why the cupcakes listed on the Bakery Zone order form are a healthy food choice. Use information from the advertisement for support.

Muffins are a healthy food choice because muffins have whole grain and less sugar. That also goes with other treats.

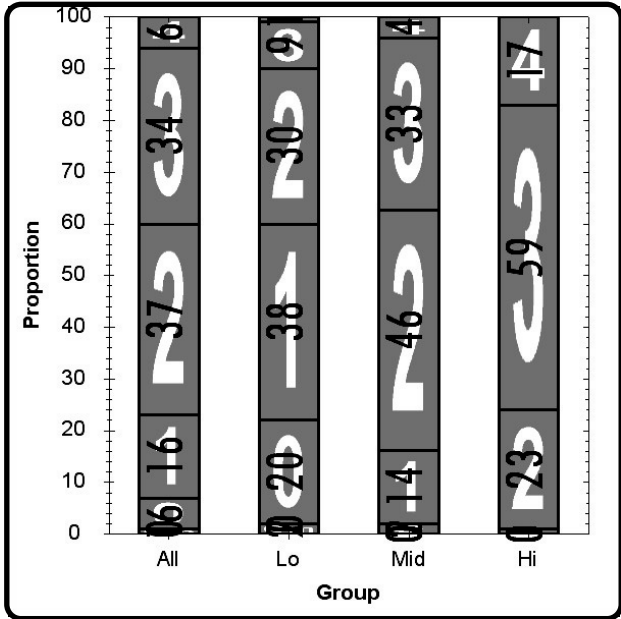
Paper 3
Score Point 0

The response addresses how muffins are a healthy food choice rather than the healthiness of cupcakes; therefore, the information is irrelevant.

Explain the entire process of placing an order with Bakery Zone from beginning to end. Use details from the advertisement for support.

Type ER	Max Points 4	N Count 6285	Item Mean 2.177	Discrimination 0.566
------------	-----------------	-----------------	--------------------	-------------------------

	0	1	2	3	4	Omit	Invalid
All	6	16	37	34	6	1	0
Low Scorers	20	38	30	9	1	2	0
Middle Scorers	2	14	46	33	4	0	0
High Scorers	0	1	23	59	17	0	0



Notes:

Female students may perform better on this item as compared to Male students. (B)

Non SPED students may perform better on this item as compared to SPED students. (C)

- 1 Explain the entire process of placing an order with Bakery Zone from beginning to end. Use details from the advertisement for support.

First you will get your order form & then fill in the blanks. Some of the things on the form that will be asked are Name, Homeroom #, Teacher, week of, grade, lunch period, & lunch ID number. Then you will fill out the bottom, which asks the name of the item you bought, the quantity you want & what the cost will be. After you fill out the form give it to your homeroom teacher. The cost for the goods will be deducted from your lunch account on Mon. Your goods will be packaged & ready to go at the cashier station. Bakery Zone is trying to make the school a healthier place with food without added sugar or preservatives.

Anchor Paper 1
Score Point 4

The response uses appropriate details from the passage to describe the process for ordering food from Bakery Zone (. . . order form . . . fill in the blanks . . . name, homeroom #, teacher, week of, grade, lunch period . . . name of the item . . . quantity . . . cost, give it to your homeroom teacher, cost for the goods will be deducted from your lunch account on Monday, packaged and ready to go at the cashier station). All of the essential details are provided and logically applied to the task.

1 Explain the entire process of placing an order with Bakery Zone from beginning to end. Use details from the advertisement for support.

First you look at the order form and then you fill out your name, Homeroom#, week of, Teacher, Grade, Lunch period, Lunch ID number. Second you look at the food you want. Then you choose it. Last but not least you give it to your homeroom teacher every Friday.

Paper 2
Score Point 3

The response uses details from the passage to describe three steps in the process for ordering food from Bakery Zone (. . . *order form . . . fill out, look at the food you want then you choose it, give it to your homeroom teacher every Friday*). While these details are accurate, they are only minimally sufficient as support for the reader's position.

- 1 Explain the entire process of placing an order with Bakery Zone from beginning to end. Use details from the advertisement for support.

For placing an order for the Bakery Zone, first you must fill out the order form attached to the first page. Then, you hand the form into your homeroom teacher on a Friday after October third. For additional order forms, talk to your homeroom teacher.

Paper 3
Score Point 2

The response provides a basic overview of the process for placing an order with Bakery Zone by including two details from the text (. . . fill out the order form, hand in the form to your homeroom teacher on a Friday). However, the details are insufficient to support the reader's position.

1 Explain the entire process of placing an order with Bakery Zone from beginning to end. Use details from the advertisement for support.

Lincoln Middle School is selling bread, muffins, and other stuff. Less sugar whole grains. See your teacher for more information.

Paper 4
Score Point 1

The response attempts to address the task by mentioning the “*order form*”. However, the details are insufficient and lack relevance to the task.

- 1 Explain the entire process of placing an order with Bakery Zone from beginning to end. Use details from the advertisement for support.

They want ~~to~~ you to stay healthy
because kids today are lazy and
Fat.

Paper 5
Score Point 0

While the response does provide some accurate information from the passage (*They want you to stay healthy*), the information does not address the process for placing an order with Bakery Zone so it is irrelevant.

