



PAWS
Mathematics
Grade 5
Released Items
With Data

2010

Copyright © **2011** by the Wyoming Department of Education.

All rights reserved. No part of this publication may be reproduced or transmitted in any form or by any means, electronic or mechanical, including photocopy, recording, or any information storage and retrieval system, without permission in writing from the Wyoming Department of Education.

Pearson and the *Pearson* logo are trademarks, in the U.S. and/or other countries, of Pearson Education, Inc. or its affiliate(s).

Portions of this work were previously published.

Printed in the United States of America.

100000008171

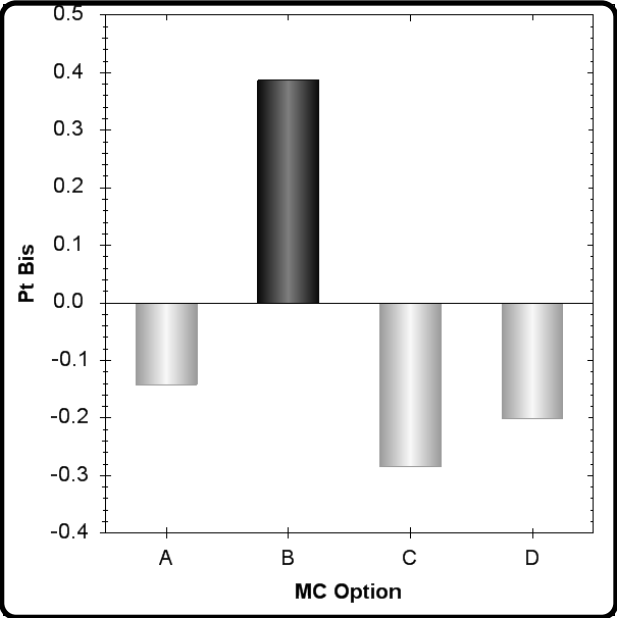
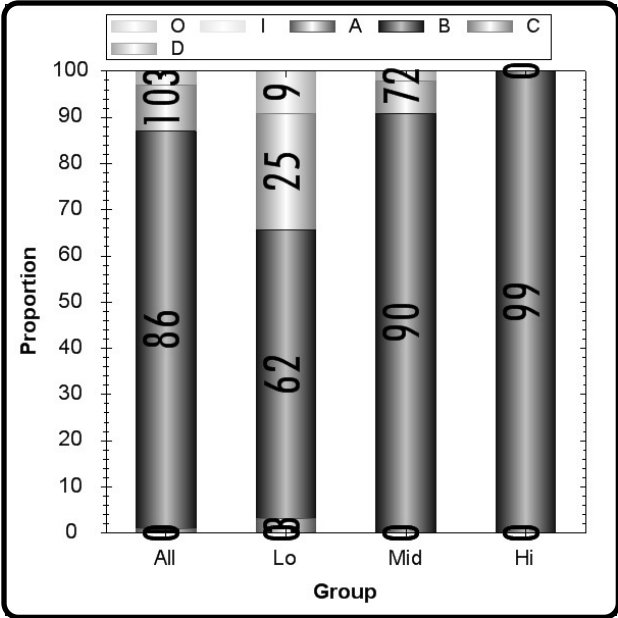
In one year Keith rode his bike two thousand forty-seven and three tenths miles. What is this distance written in standard form?

- A.** 2,004.73
- B.** 2,047.3
- C.** 2,470.03
- D.** 2,473.3

Type	Max Points	Correct Answer	N Count	Item Mean	Discrimination
Multiple Choice	1	B	6565	0.860	0.387

	A	B	C	D	Omit	Invalid
All	1	86	10	3	0	0
Low Scorers	3	62	25	9	0	0
Middle Scorers	0	90	7	2	0	0
High Scorers	0	99	0	0	0	0

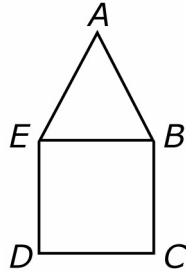
MC Item Option Discriminations			
A	B	C	D
-0.142	0.387	-0.284	-0.201



Notes:

3415380

Amy drew the figure shown below by combining a square and a triangle.



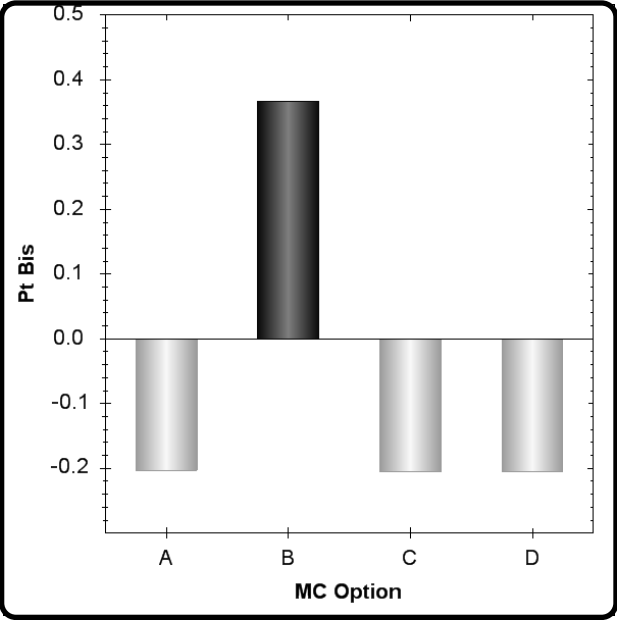
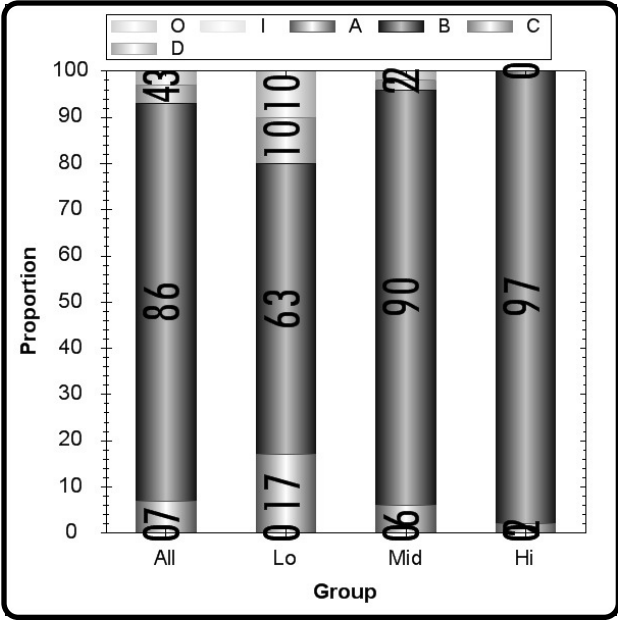
Which term describes $\angle D$?

- A.** Acute
- B.** Right
- C.** Obtuse
- D.** Straight

Type	Max Points	Correct Answer	N Count	Item Mean	Discrimination
Multiple Choice	1	B	6565	0.860	0.367

	A	B	C	D	Omit	Invalid
All	7	86	4	3	0	0
Low Scorers	17	63	10	10	0	0
Middle Scorers	6	90	2	2	0	0
High Scorers	2	97	0	0	0	0

MC Item Option Discriminations			
A	B	C	D
-0.203	0.367	-0.205	-0.205

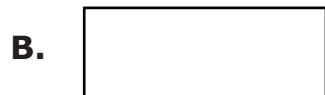
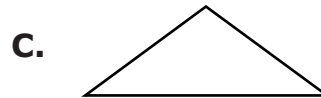
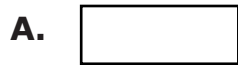


Notes:

Theo drew the rectangle pictured below.



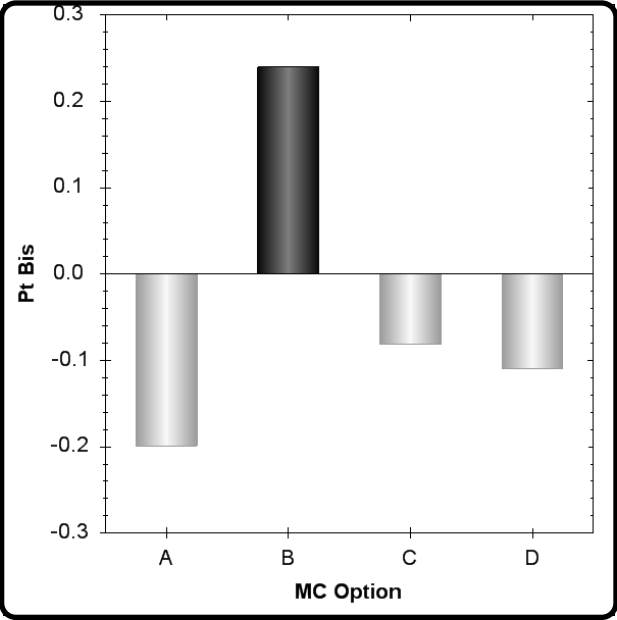
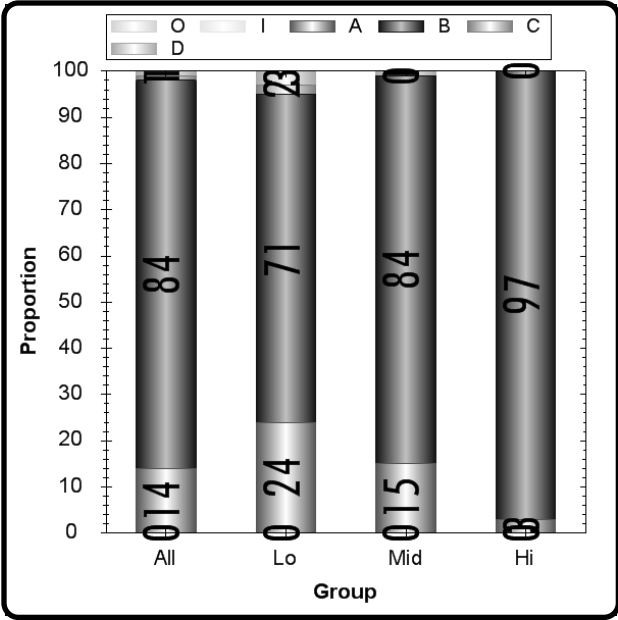
Rachel drew a shape congruent to the one that Theo drew. Which of the following could be the shape Rachel drew?



Type	Max Points	Correct Answer	N Count	Item Mean	Discrimination
Multiple Choice	1	B	6565	0.840	0.240

	A	B	C	D	Omit	Invalid
All	14	84	1	1	0	0
Low Scorers	24	71	2	3	0	0
Middle Scorers	15	84	0	1	0	0
High Scorers	3	97	0	0	0	0

MC Item Option Discriminations			
A	B	C	D
-0.199	0.240	-0.081	-0.110



Notes:

3337683

Katy created the number pattern below using a multiplication rule.

4, 12, 36, 108, 324

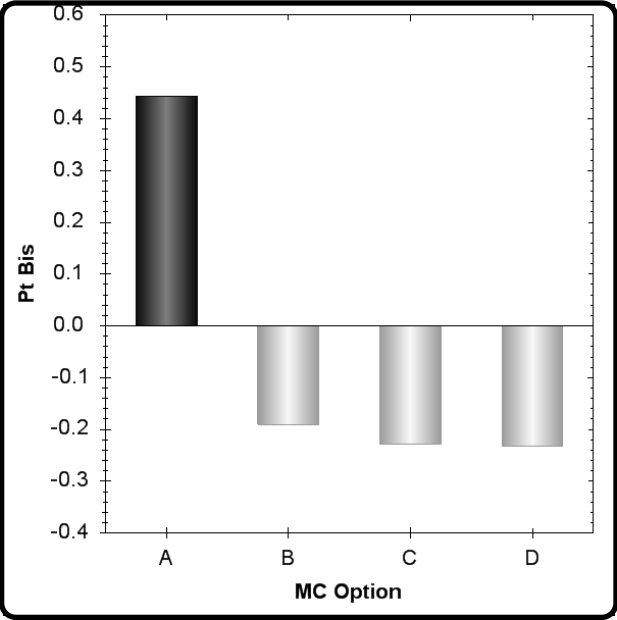
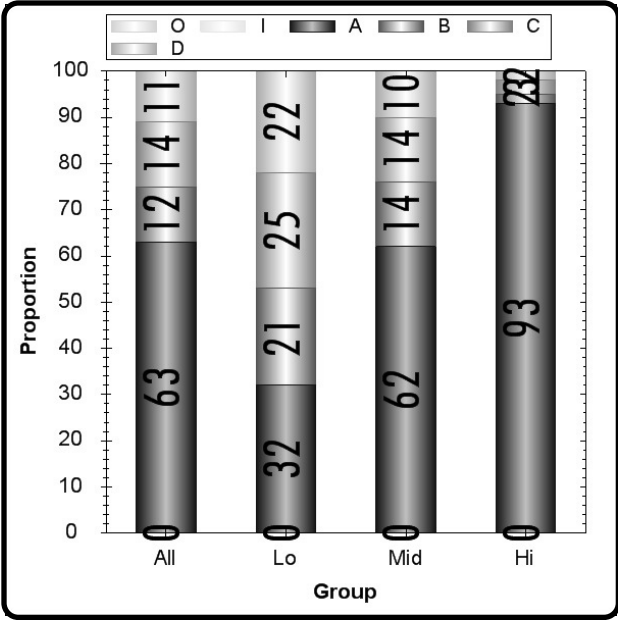
Which number pattern below could have been created using the same rule?

- A.** 1, 3, 9, 27, 81
- B.** 1, 9, 17, 25, 33
- C.** 5, 20, 80, 320, 1280
- D.** 14, 22, 26, 38, 44

Type	Max Points	Correct Answer	N Count	Item Mean	Discrimination
Multiple Choice	1	A	6565	0.630	0.444

	A	B	C	D	Omit	Invalid
All	63	12	14	11	0	0
Low Scorers	32	21	25	22	0	0
Middle Scorers	62	14	14	10	0	0
High Scorers	93	2	3	2	0	0

MC Item Option Discriminations			
A	B	C	D
0.444	-0.190	-0.228	-0.233



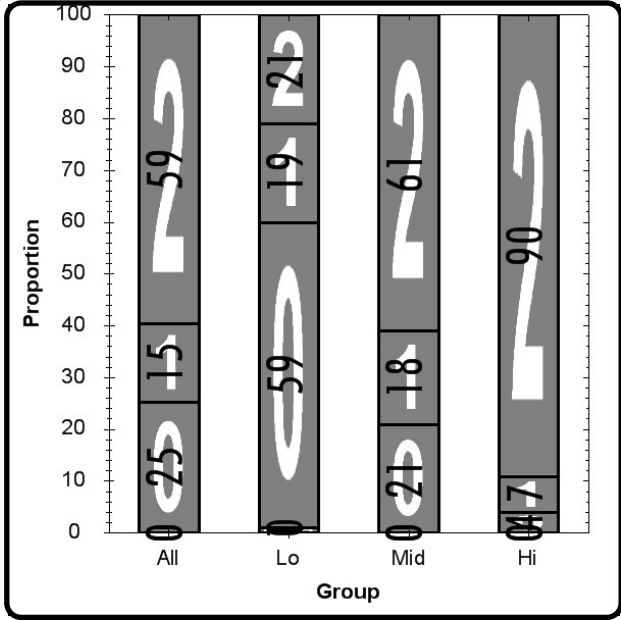
Notes:

It took Lyle $5\frac{1}{2}$ minutes to make his bed. What number of seconds is equivalent to $5\frac{1}{2}$ minutes? Write your answer in the space below and show or explain how you got your answer.

Number of Seconds: _____

Type SR	Max Points 2	N Count 6565	Item Mean 1.340	Discrimination 0.495
------------	-----------------	-----------------	--------------------	-------------------------

	0	1	2	Omit	Invalid
All	25	15	59	0	0
Low Scorers	59	19	21	1	0
Middle Scorers	21	18	61	0	0
High Scorers	4	7	90	0	0



Notes:

- 5 It took Lyle $5\frac{1}{2}$ minutes to make his bed. What number of seconds is equivalent to $5\frac{1}{2}$ minutes? Write your answer in the space below and show or explain how you got your answer.

$$60 + 60 + 60 + 60 + 60 + \frac{1}{2} \times 60 = 330$$

Number of Seconds: 330

because $60 + 60 + 60 + 60 + 60 + 30 = 330$

Score Point 2

This response is complete and accurate. This student writes out the addition ($60+60+60+60+60+30$) which is an appropriate strategy for completing the task. This response has a correct answer (330) and supporting work shown and receives full credit.

5 It took Lyle $5\frac{1}{2}$ minutes to make his bed. What number of seconds is equivalent to $5\frac{1}{2}$ minutes? Write your answer in the space below and show or explain how you got your answer.

Number of Seconds: 330

Score Point 1

This response is incomplete. The answer provided is correct (330) but there is no work or explanation of how this answer was achieved. Without supporting work this response can only earn partial credit.

5 It took Lyle $5\frac{1}{2}$ minutes to make his bed. What number of seconds is equivalent to $5\frac{1}{2}$ minutes? Write your answer in the space below and show or explain how you got your answer.

Number of Seconds: 6

I just rounded it.

Score Point 0

This response shows no understanding of how to successfully complete the task. The answer (6) is wrong and the only method described is rounding, which is not appropriate at any stage of this problem. There is no evidence of comprehension and so no credit is earned.

