



PAWS
Mathematics
Grade 3
Released Items
With Data

2010

Copyright © **2011** by the Wyoming Department of Education.

All rights reserved. No part of this publication may be reproduced or transmitted in any form or by any means, electronic or mechanical, including photocopy, recording, or any information storage and retrieval system, without permission in writing from the Wyoming Department of Education.

Pearson and the *Pearson* logo are trademarks, in the U.S. and/or other countries, of Pearson Education, Inc. or its affiliate(s).

Portions of this work were previously published.

Printed in the United States of America.

3417125

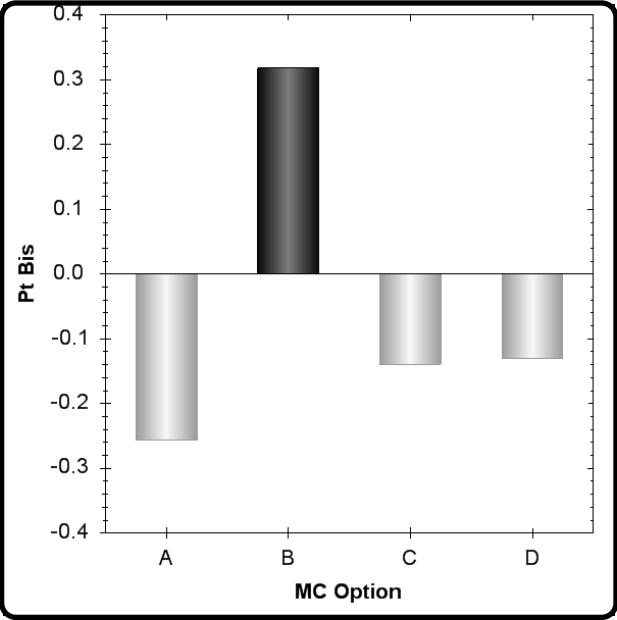
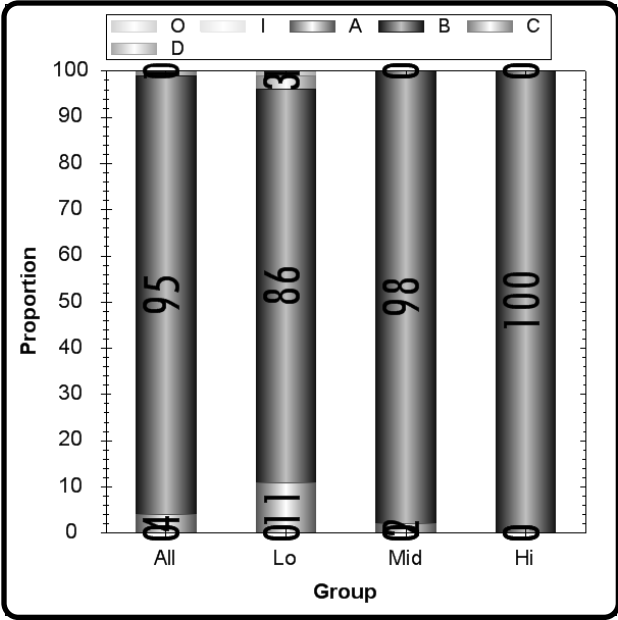
Which of these shows seven thousand nine hundred ninety-seven?

- A.** 7,097
- B.** 7,997
- C.** 797
- D.** 709

Type	Max Points	Correct Answer	N Count	Item Mean	Discrimination
Multiple Choice	1	B	6572	0.950	0.318

	A	B	C	D	Omit	Invalid
All	4	95	1	0	0	0
Low Scorers	11	86	3	1	0	0
Middle Scorers	2	98	0	0	0	0
High Scorers	0	100	0	0	0	0

MC Item Option Discriminations			
A	B	C	D
-0.257	0.318	-0.139	-0.130



Notes:

White students may perform better on this item as compared to Am. Indian students. (B)

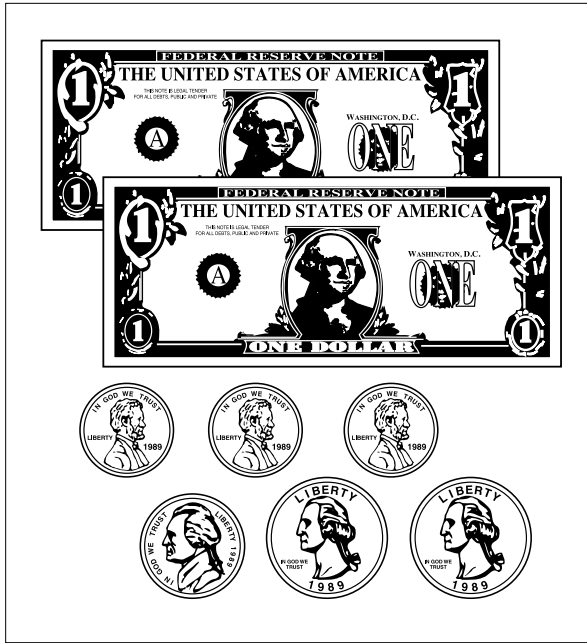
Non SPED students may perform better on this item as compared to SPED students. (C)

3337976

Jesse wants to buy the jump rope pictured below.



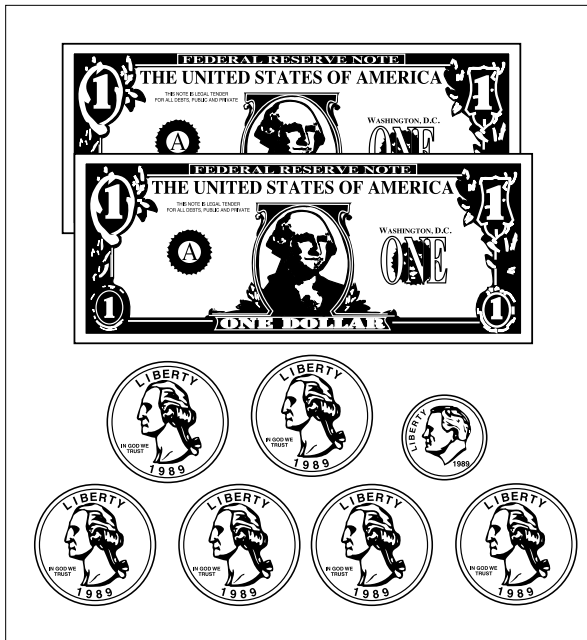
Which of these would be enough money for Jesse to buy the jump rope?



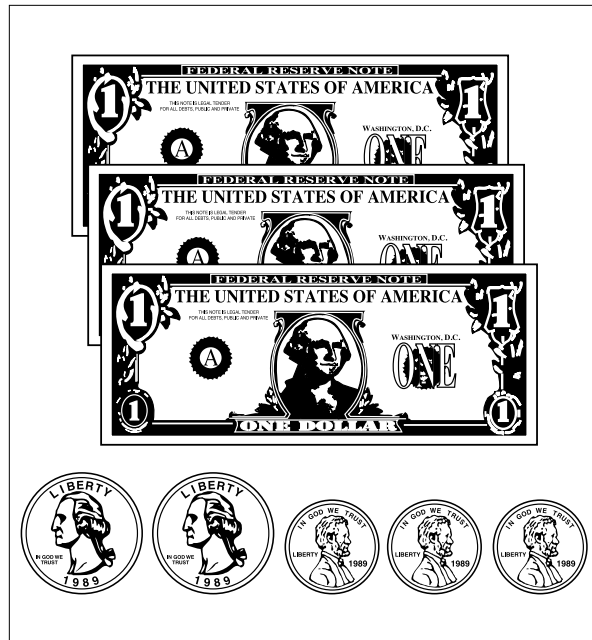
A.



C.



B.

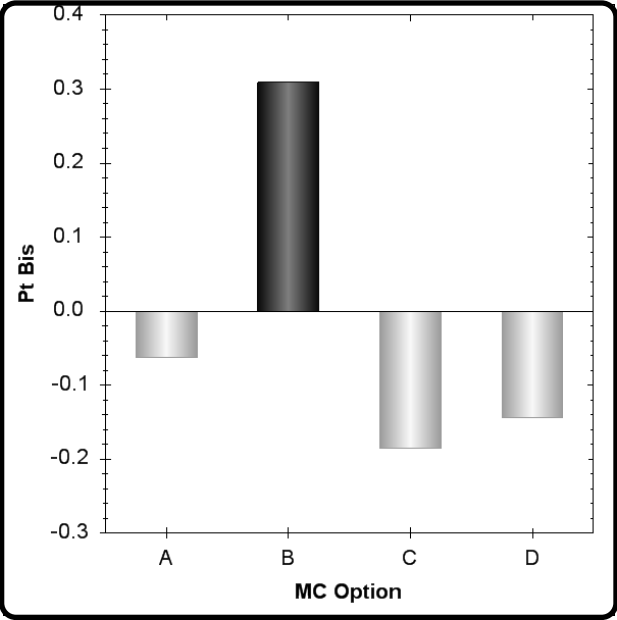
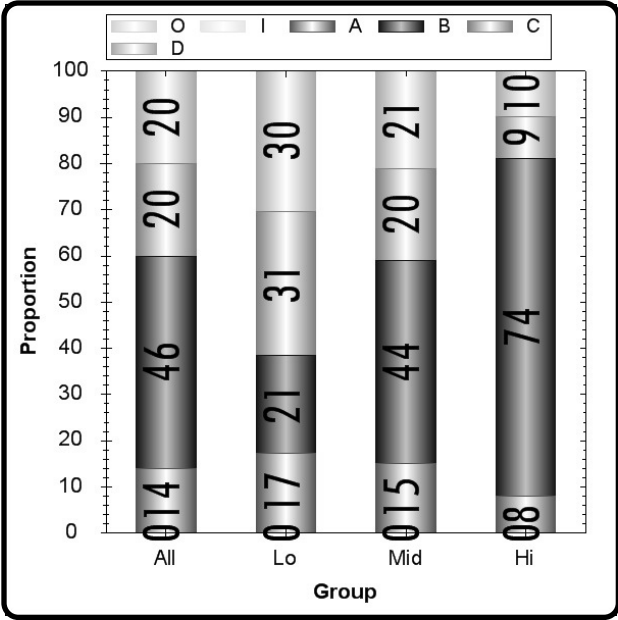


D.

Type	Max Points	Correct Answer	N Count	Item Mean	Discrimination
Multiple Choice	1	B	6572	0.460	0.309

	A	B	C	D	Omit	Invalid
All	14	46	20	20	0	0
Low Scorers	17	21	31	30	0	0
Middle Scorers	15	44	20	21	0	0
High Scorers	8	74	9	10	0	0

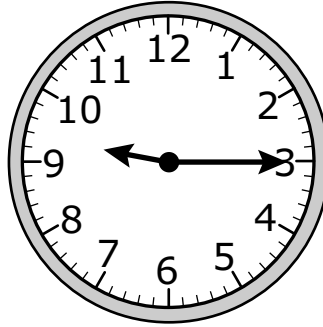
MC Item Option Discriminations			
A	B	C	D
-0.063	0.309	-0.185	-0.144



Notes:

3337613

Oscar fell asleep at the time shown on the clock below.



Which is a correct way to say the time shown on the clock?

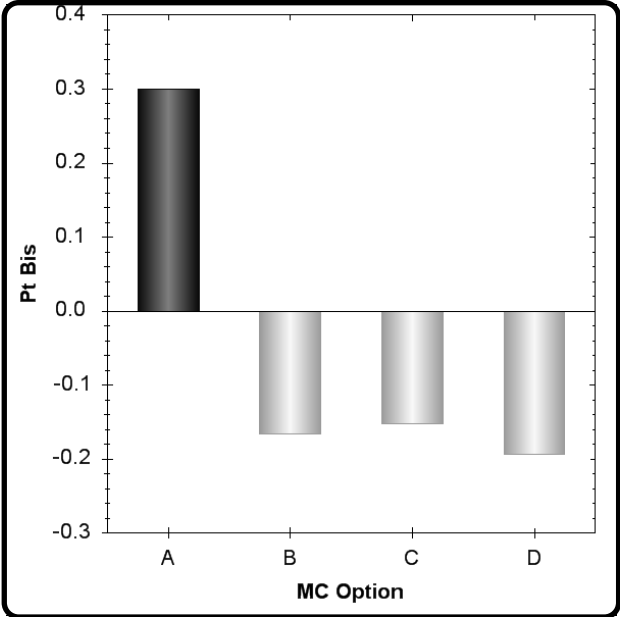
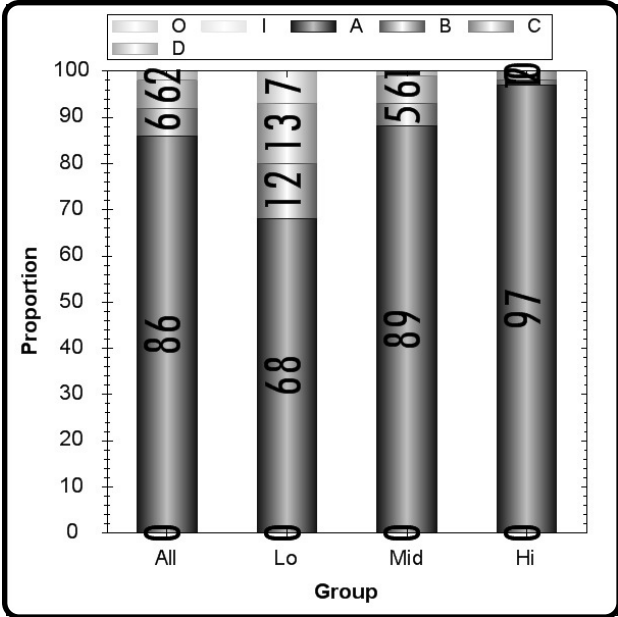
- A.** Nine-fifteen
- B.** Three forty-five
- C.** Quarter to nine
- D.** Three-fifteen

Grade 3	Math	CID 3337613
Item # 14	3M.1.b	OP10

Type	Max Points	Correct Answer	N Count	Item Mean	Discrimination
Multiple Choice	1	A	6572	0.860	0.300

	A	B	C	D	Omit	Invalid
All	86	6	6	2	0	0
Low Scorers	68	12	13	7	0	0
Middle Scorers	89	5	6	1	0	0
High Scorers	97	1	2	0	0	0

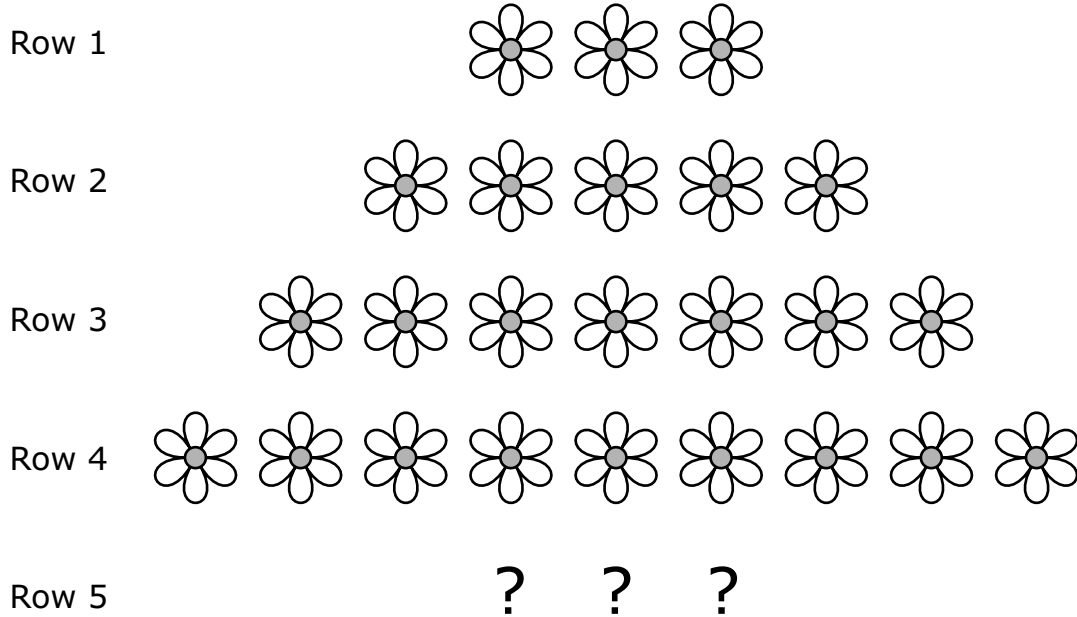
MC Item Option Discriminations			
A	B	C	D
0.300	-0.166	-0.152	-0.193



Notes:

100000006854

Marcia is creating a pattern in her flower garden as shown in the picture. She begins her pattern with 3 flowers in the first row. Each row of flowers then increases by the same number.



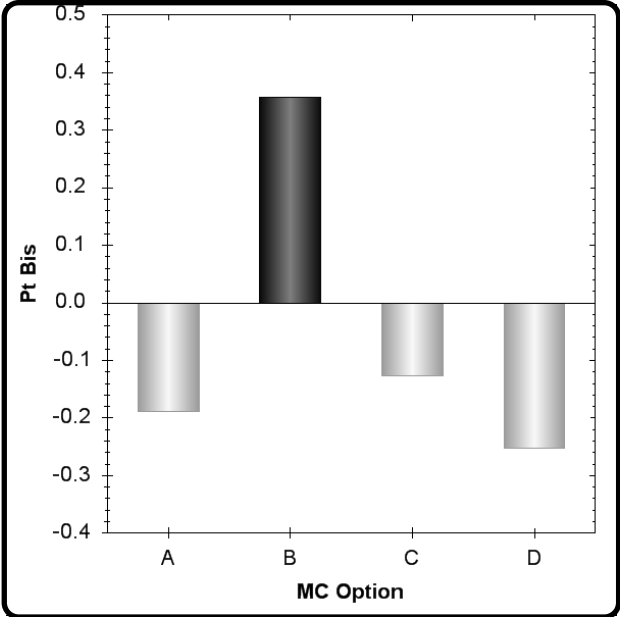
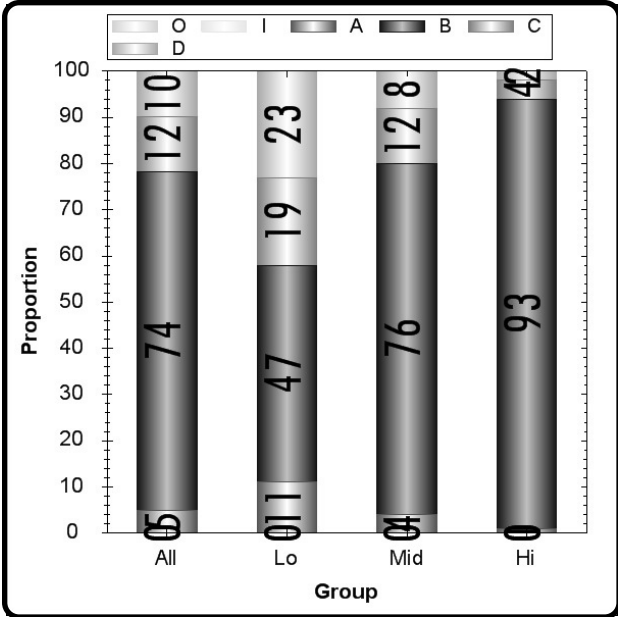
Each row of flowers will continue to increase by the same number. What will be the total number of flowers in Row 5 of Marcia's garden?

- A. 9
- B. 11
- C. 12
- D. 15

Type	Max Points	Correct Answer	N Count	Item Mean	Discrimination
Multiple Choice	1	B	6572	0.740	0.358

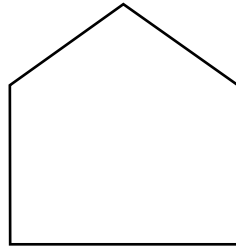
	A	B	C	D	Omit	Invalid
All	5	74	12	10	0	0
Low Scorers	11	47	19	23	0	0
Middle Scorers	4	76	12	8	0	0
High Scorers	1	93	4	2	0	0

MC Item Option Discriminations			
A	B	C	D
-0.189	0.358	-0.127	-0.253



Notes:

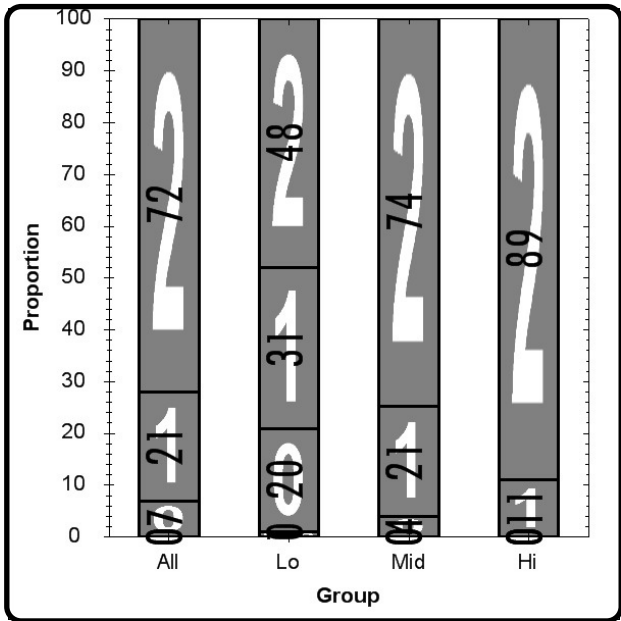
Draw one line of symmetry on the shape shown below.



In the space below, explain why the line you drew is a line of symmetry.

Type SR	Max Points 2	N Count 6572	Item Mean 1.650	Discrimination 0.357
------------	-----------------	-----------------	--------------------	-------------------------

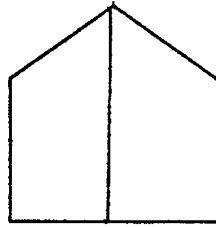
	0	1	2	Omit	Invalid
All	7	21	72	0	0
Low Scorers	20	31	48	1	0
Middle Scorers	4	21	74	0	0
High Scorers	0	11	89	0	0




Notes:

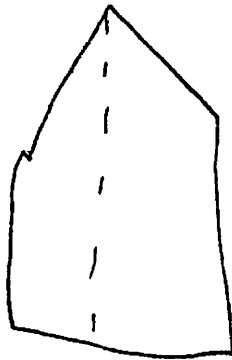
Non SPED students may perform better on this item as compared to SPED students. (B)

3 Draw one line of symmetry on the shape shown below.



In the space below, explain why the line you drew is a line of symmetry.

It would not be a line of symmetry if it was like this,  it would cross s. SO you go like this,

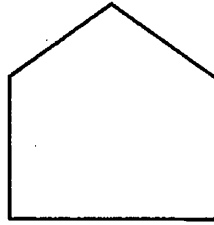


two equal halves.

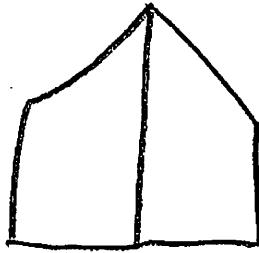
Score Point 2

The response is complete and accurate. The line of symmetry is drawn correctly. The explanation is accurate. The student draws the pentagon folded evenly in half, then draws the reopened pentagon to show *two equal halves* along the line of symmetry.

3 Draw one line of symmetry on the shape shown below.



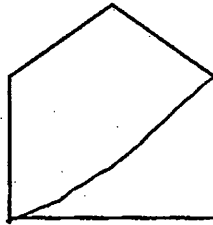
In the space below, explain why the line you drew is a line of symmetry.



Score Point 1

The response is incomplete. The student does draw the line of symmetry correctly, and receives credit. However, no explanation is provided.

3 Draw one line of symmetry on the shape shown below.



In the space below, explain why the line you drew is a line of symmetry.

Its a line of symmetry
because symmetry is dyagonal.
Also its a line of symmetry
because if you draw a
strait line its not
symmetry.

Score Point 0

The response shows no understanding of how to successfully complete the task.

