



**PAWS  
Mathematics  
Grade 8**

**Released Items  
With Data**

**2009**

Copyright © **2010** by the Wyoming Department of Education.

All rights reserved. No part of this publication may be reproduced or transmitted in any form or by any means, electronic or mechanical, including photocopy, recording, or any information storage and retrieval system, without permission in writing from the Wyoming Department of Education.

*Pearson* and the *Pearson* logo are trademarks, in the U.S. and/or other countries, of Pearson Education, Inc. or its affiliate(s).

Portions of this work were previously published.

Printed in the United States of America.



3508994

**René cut 5 pieces of fabric of the same length from a roll of fabric to make curtains.**

- **Each piece of fabric was  $8\frac{1}{4}$  feet in length.**
- **The roll of fabric was 45 feet in length.**

**What is the amount of fabric remaining on the roll?**

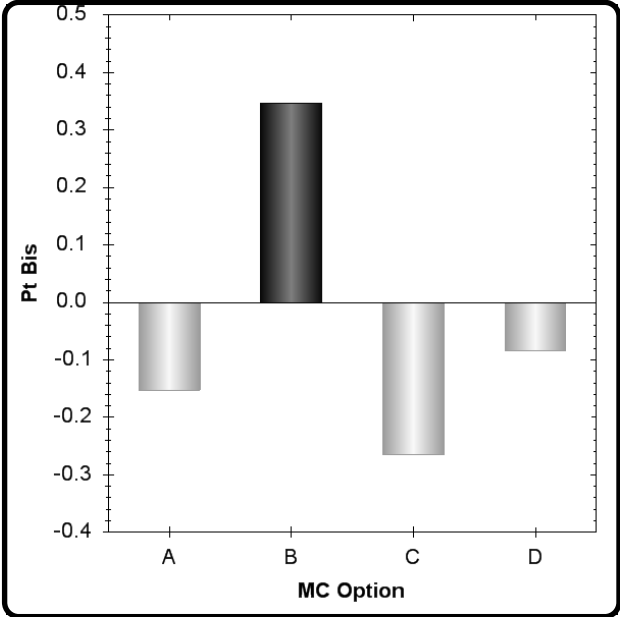
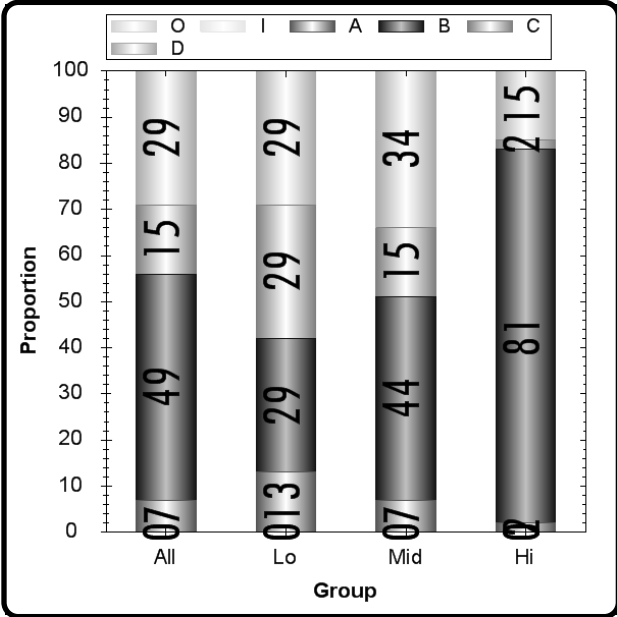
- A.  $3\frac{1}{5}$  ft**
- B.  $3\frac{3}{4}$  ft**
- C.  $4\frac{1}{5}$  ft**
- D.  $4\frac{3}{4}$  ft**

**Grade 8** **Math** **CID 3508994**  
**Item # 7** **8N.3.a** **Administration OP09**

Type	Max Points	Correct Answer	N Count	Item Mean	Discrimination
Multiple Choice	1	B	6215	0.492	0.347

	A	B	C	D	Omit	Invalid
All	7	49	15	29	0	0
Low Scorers	13	29	29	29	0	0
Middle Scorers	7	44	15	34	0	0
High Scorers	2	81	2	15	0	0

MC Item Option Discriminations			
A	B	C	D
-0.153	0.347	-0.265	-0.084



Notes:

3341655

An agricultural lab uses the following equation to predict  $h$ , the height of a plant in inches after  $w$  weeks of experimental growth.

$$h = 8w$$

What will be the height of the plant in inches after 5 weeks of experimental growth?

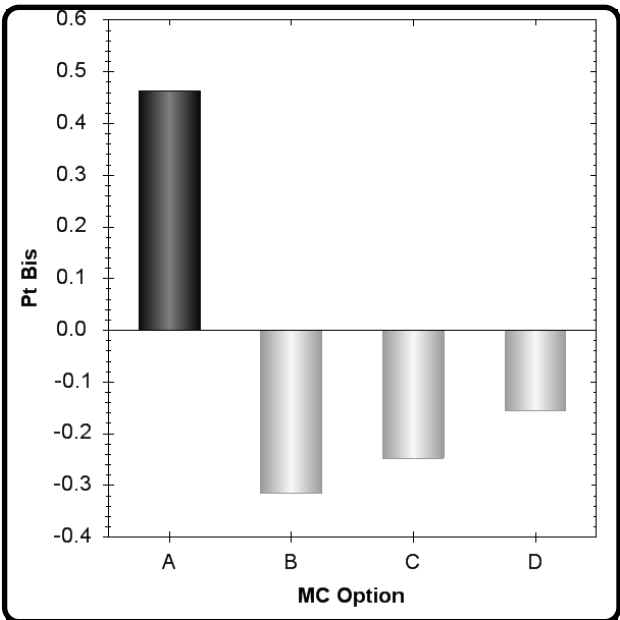
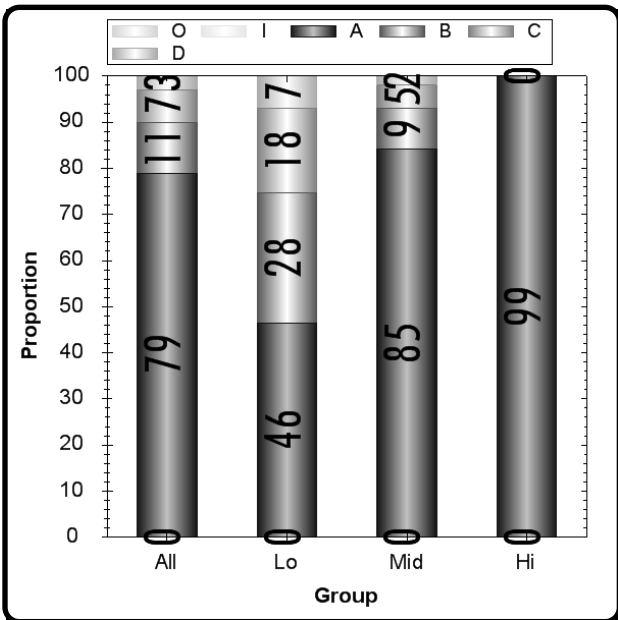
- A. 40 in.
- B. 13 in.
- C.  $\frac{8}{5}$  in.
- D.  $\frac{5}{8}$  in.

**Grade 8** **Math** **CID 3341655**  
**Item # 21** **8A.1.b** **Administration OP09**

Type	Max Points	Correct Answer	N Count	Item Mean	Discrimination
Multiple Choice	1	A	6215	0.794	0.463

	A	B	C	D	Omit	Invalid
All	79	11	7	3	0	0
Low Scorers	46	28	18	7	0	0
Middle Scorers	85	9	5	2	0	0
High Scorers	99	0	0	0	0	0

MC Item Option Discriminations			
A	B	C	D
0.463	-0.315	-0.247	-0.156



Notes:  
 Female students may perform better on this item as compared to Male students. (B)

3376931

**Jason drew an angle that measured  $65^\circ$ . What would be the measure of its complementary angle?**

- A.**  $115^\circ$
- B.**  $105^\circ$
- C.**  $35^\circ$
- D.**  $25^\circ$

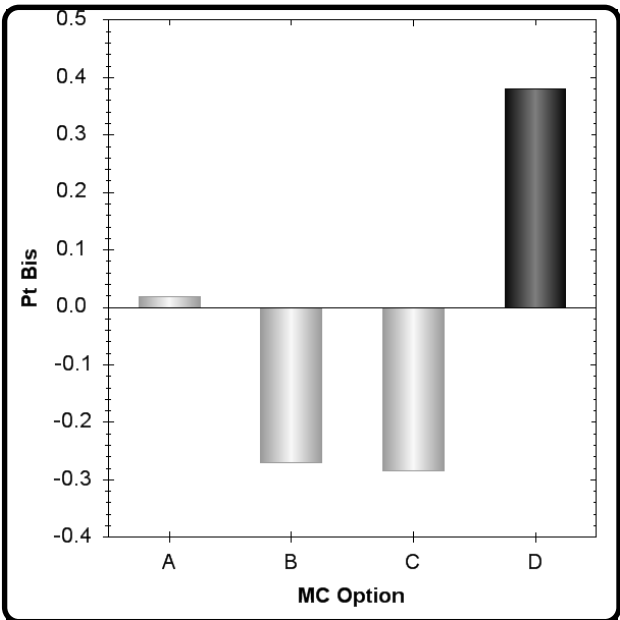
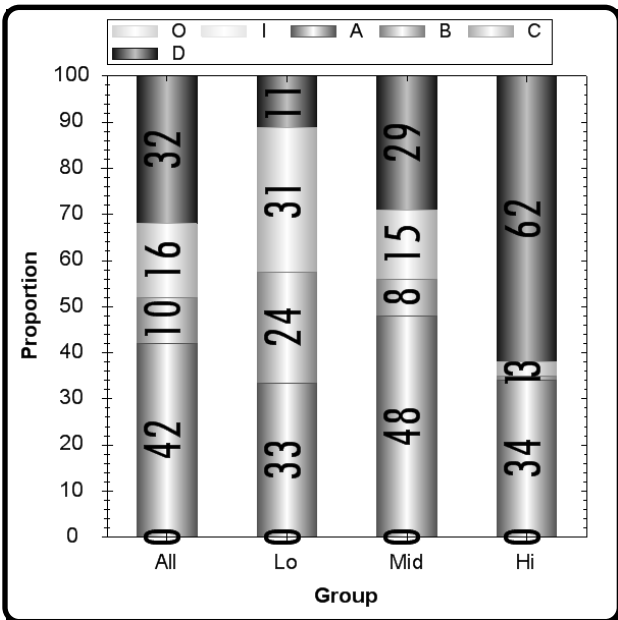


Grade 8 Item # 20	Math 8M.1.a	CID 3376931 Administration OP09
----------------------	----------------	------------------------------------

Type	Max Points	Correct Answer	N Count	Item Mean	Discrimination
Multiple Choice	1	D	6215	0.323	0.380

	A	B	C	D	Omit	Invalid
All	42	10	16	32	0	0
Low Scorers	33	24	31	11	0	0
Middle Scorers	48	8	15	29	0	0
High Scorers	34	1	3	62	0	0

MC Item Option Discriminations			
A	B	C	D
0.019	-0.271	-0.284	0.380



Notes:

Option A is more popular than key D. Check option discrimination.

Option A has positive discrimination. Check option for ambiguity/correctness.

Theo spun the arrow of a spinner 20 times during a math game. The spinner is divided into 4 sections of equal size, each labeled blue, green, red or yellow. The table shows the number of times the arrow landed on each section.

**Theo's Spinner Data**

Section	Number
Blue	6
Green	2
Red	3
Yellow	9

**Based on theoretical probability, which statement best describes the outcomes of the arrow landing on a yellow section?**

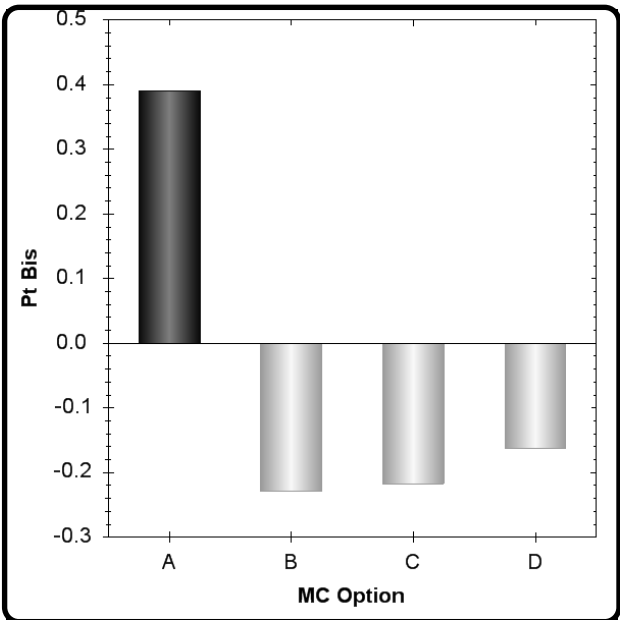
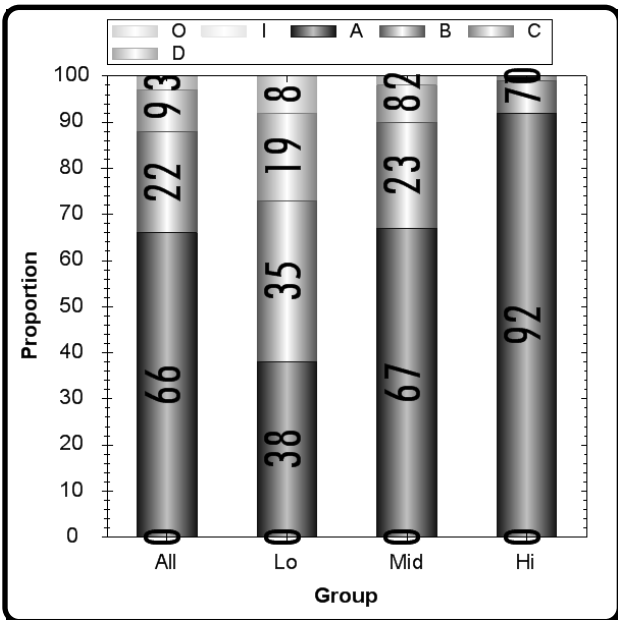
- A.** It landed 4 more times than expected.
- B.** It landed 5 more times than expected.
- C.** It landed 4 less times than expected.
- D.** It landed 5 less times than expected.

Grade 8 Item # 40	Math 8D.2.a	CID 3510276 Administration OP09
----------------------	----------------	------------------------------------

Type	Max Points	Correct Answer	N Count	Item Mean	Discrimination
Multiple Choice	1	A	6215	0.661	0.391

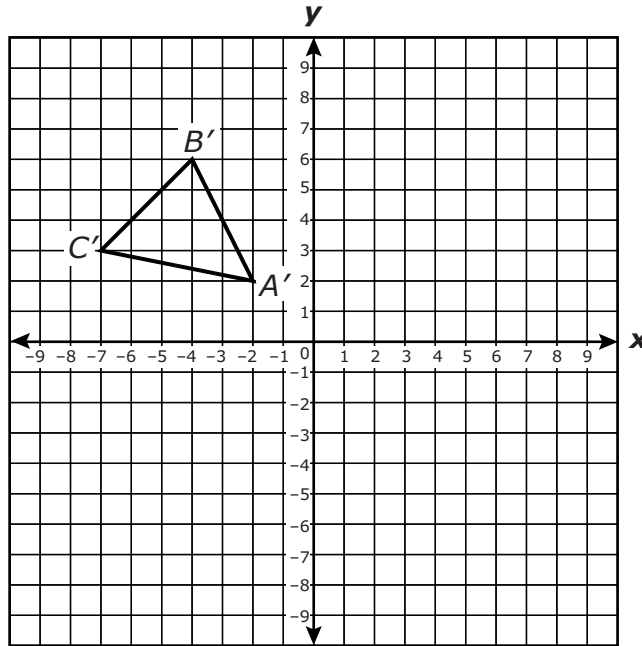
	A	B	C	D	Omit	Invalid
All	66	22	9	3	0	0
Low Scorers	38	35	19	8	0	0
Middle Scorers	67	23	8	2	0	0
High Scorers	92	7	1	0	0	0

MC Item Option Discriminations			
A	B	C	D
0.391	-0.229	-0.217	-0.163



Notes:

The grid below shows triangle  $A'B'C'$ , the translated image of triangle  $ABC$ .



**Part A.** Triangle  $ABC$  was in the fourth quadrant before it was translated to form triangle  $A'B'C'$ . Point  $B$  was located at  $(4, -2)$ . What were the coordinates of the other two vertices of triangle  $ABC$  before the translation? Write your answers in the spaces below. You may use the coordinate grid to show or explain how you got your answer.

Coordinates of  $A$ : \_\_\_\_\_

Coordinates of  $C$ : \_\_\_\_\_

---

---

---

**Part B.** Using your coordinates from Part A, describe the translation that could have been used on triangle  $ABC$  to obtain triangle  $A'B'C'$ . Write your answer in the space provided. Show or explain how you got your answer.

**Translation:** \_\_\_\_\_

---

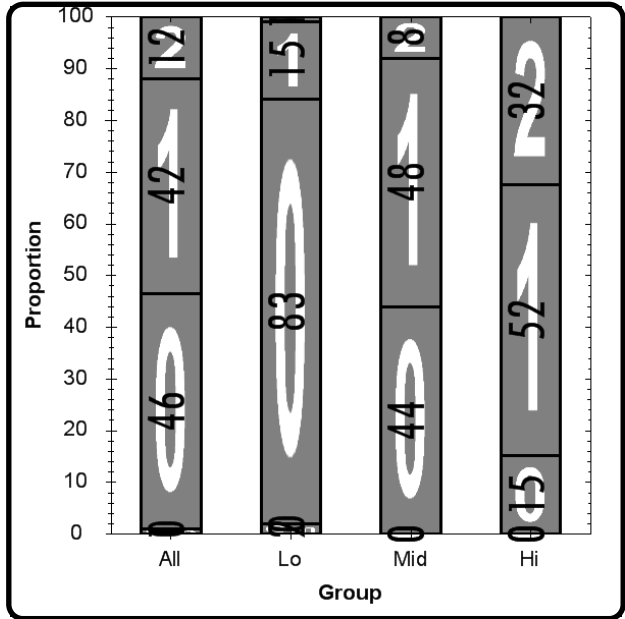
---

---

Grade 8 Item # 51	Math 8G.3.a	CID 3453593 Administration OP09
----------------------	----------------	------------------------------------

Type Short Answer	Max Points 2	N Count 6215	Item Mean 0.651	Discrimination 0.508
----------------------	-----------------	-----------------	--------------------	-------------------------

	0	1	2	Omit	Invalid
All	46	42	12	1	0
Low Scorers	83	15	1	2	0
Middle Scorers	44	48	8	0	0
High Scorers	15	52	32	0	0



Notes:



