



**PAWS
Mathematics
Grade 7**

**Released Items
With Data**

2009

Copyright © **2010** by the Wyoming Department of Education.

All rights reserved. No part of this publication may be reproduced or transmitted in any form or by any means, electronic or mechanical, including photocopy, recording, or any information storage and retrieval system, without permission in writing from the Wyoming Department of Education.

Pearson and the *Pearson* logo are trademarks, in the U.S. and/or other countries, of Pearson Education, Inc. or its affiliate(s).

Portions of this work were previously published.

Printed in the United States of America.

3508879

Hardware stores have many different lengths of nails. Which of the following nail lengths is greatest?

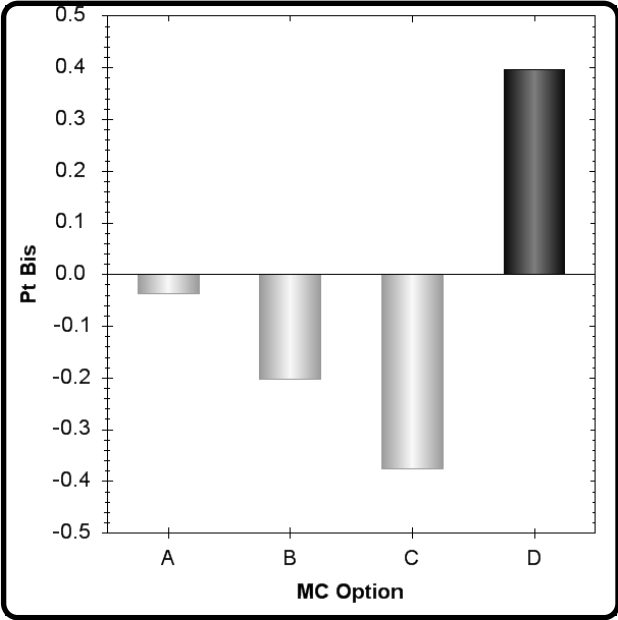
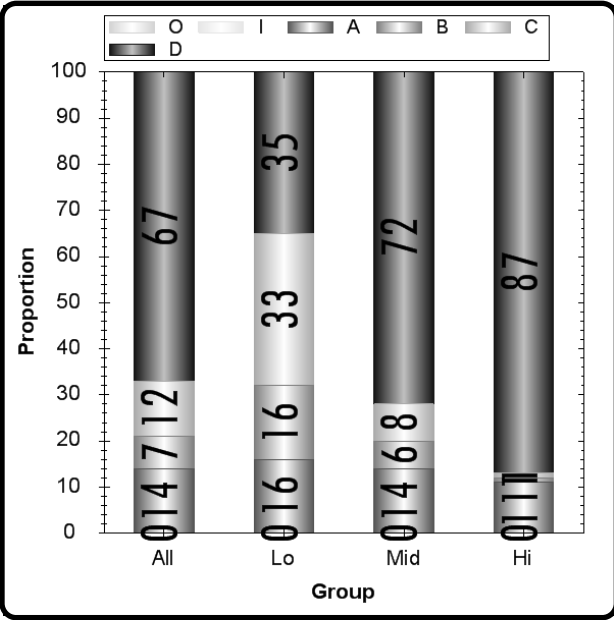
- A.** $\frac{5}{8}$ inch
- B.** $\frac{1}{4}$ inch
- C.** $\frac{7}{16}$ inch
- D.** $\frac{2}{3}$ inch

Grade 7 Math CID 3508879
Item # 1 Administration OP09
N2a

Type	Max Points	Correct Answer	N Count	Item Mean	Discrimination
Multiple Choice	1	D	6398	0.671	0.397

	A	B	C	D	Omit	Invalid
All	14	7	12	67	0	0
Low Scorers	16	16	33	35	0	0
Middle Scorers	14	6	8	72	0	0
High Scorers	11	1	1	87	0	0

MC Item Option Discriminations			
A	B	C	D
-0.037	-0.203	-0.376	0.397



Notes:
Non SPED students may perform better on this item as compared to SPED students. (C)

3415025

What is the value of x in the equation shown below?

$$\frac{x}{4} = 16$$

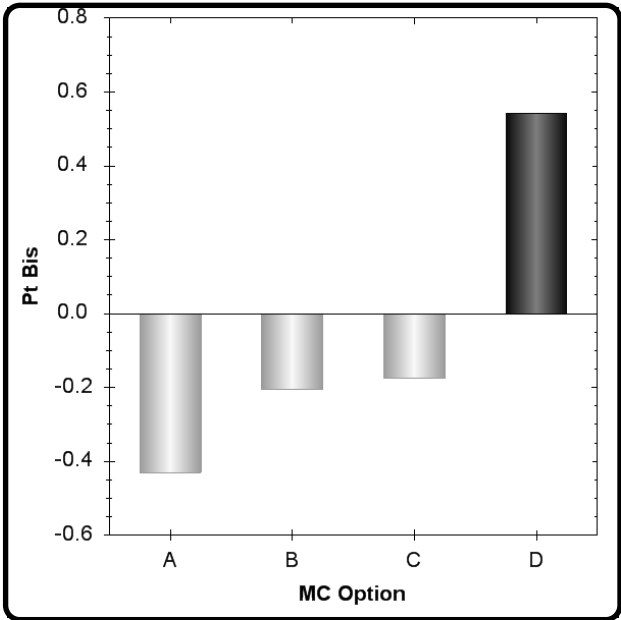
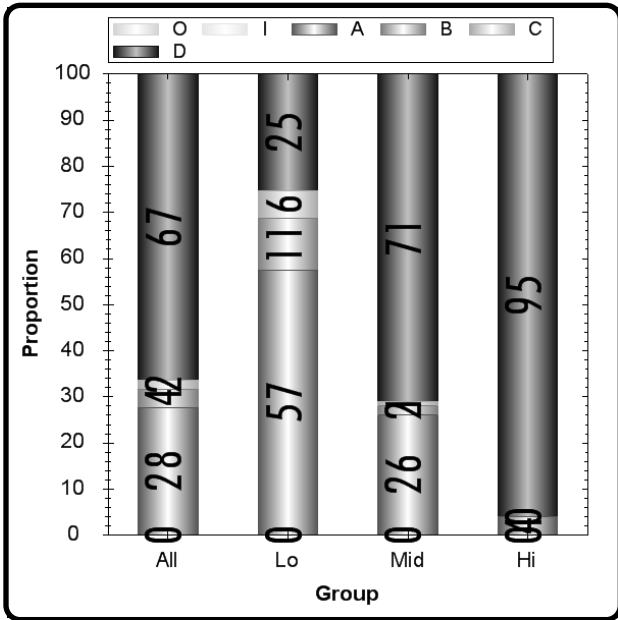
- A.** 4
- B.** 12
- C.** 20
- D.** 64

Grade 7 Item # 2	Math A1a	CID 3415025 Administration OP09
---------------------	-------------	------------------------------------

Type	Max Points	Correct Answer	N Count	Item Mean	Discrimination
Multiple Choice	1	D	6398	0.666	0.542

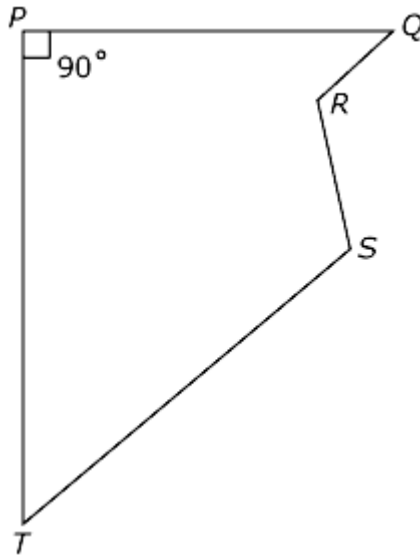
	A	B	C	D	Omit	Invalid
All	28	4	2	67	0	0
Low Scorers	57	11	6	25	0	0
Middle Scorers	26	2	1	71	0	0
High Scorers	4	0	0	95	0	0

MC Item Option Discriminations			
A	B	C	D
-0.430	-0.205	-0.175	0.542



Notes:

Polygon $PQRST$ is shown.



Which of the following must be true?

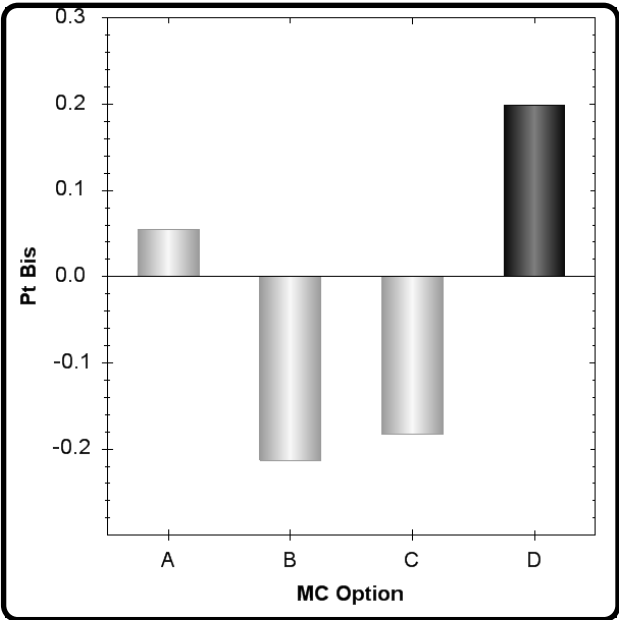
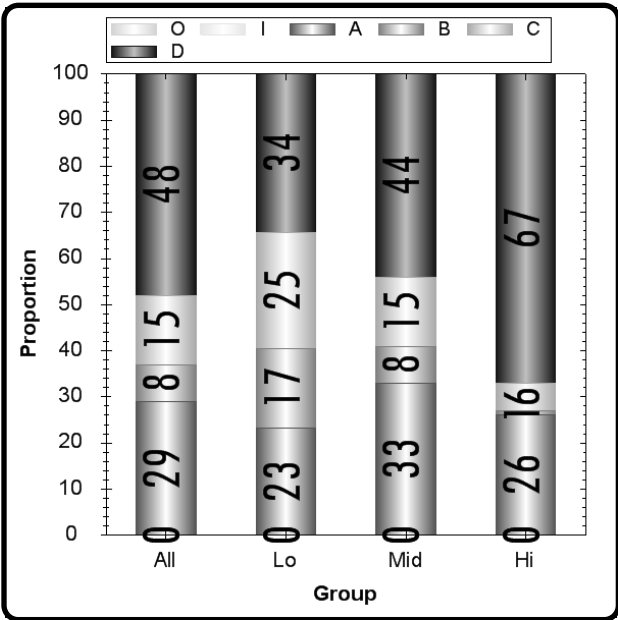
- A.** Segments TS and QR are parallel.
- B.** Segments RS and PT are parallel.
- C.** Segments ST and RS are perpendicular.
- D.** Segments PT and PQ are perpendicular.

Grade 7 **Math** **CID 3340096**
Item # 2 **G1a** **Administration OP09**

Type	Max Points	Correct Answer	N Count	Item Mean	Discrimination
Multiple Choice	1	D	6398	0.475	0.199

	A	B	C	D	Omit	Invalid
All	29	8	15	48	0	0
Low Scorers	23	17	25	34	0	0
Middle Scorers	33	8	15	44	0	0
High Scorers	26	1	6	67	0	0

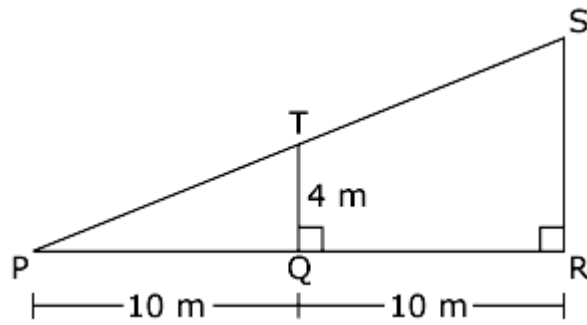
MC Item Option Discriminations			
A	B	C	D
0.055	-0.213	-0.183	0.199



Notes:
 Non LEP students may perform better on this item as compared to LEP students. (B)
 Low discrimination. Check item and key (if MC item) for ambiguity.
 Option A has positive discrimination. Check option for ambiguity/correctness.

100000030552

Triangle PTQ is similar to triangle PSR .



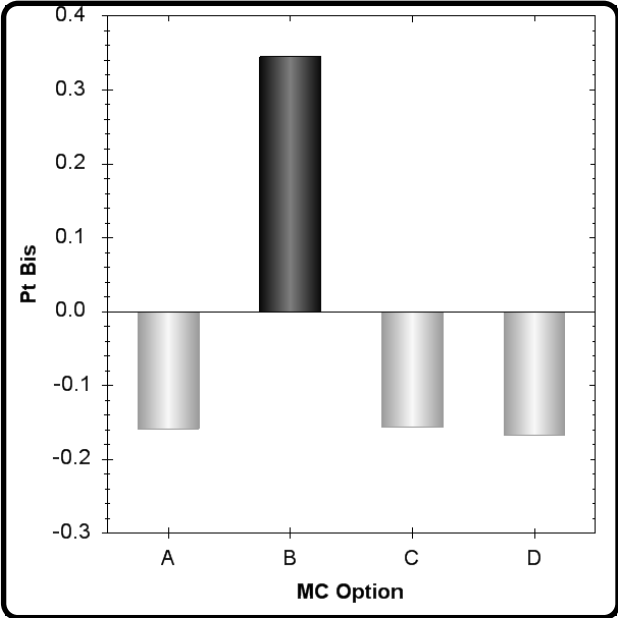
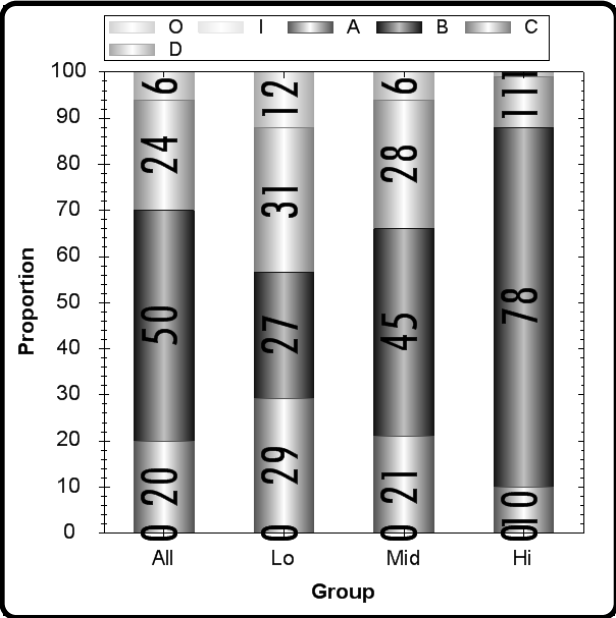
What is the length of \overline{SR} ?

- A.** 6 m
- B.** 8 m
- C.** 10 m
- D.** 16 m

Type	Max Points	Correct Answer	N Count	Item Mean	Discrimination
Multiple Choice	1	B	6398	0.497	0.345

	A	B	C	D	Omit	Invalid
All	20	50	24	6	0	0
Low Scorers	29	27	31	12	0	0
Middle Scorers	21	45	28	6	0	0
High Scorers	10	78	11	1	0	0

MC Item Option Discriminations			
A	B	C	D
-0.159	0.345	-0.157	-0.167



Notes:

3415313

The finish times for five participants in a triathlon are listed in the table below.

Triathlon Finish Times

Participant	Time (Hr:Min:Sec)
1	6:22:02
2	6:30:20
3	6:52:06
4	6:53:05
5	6:30:10

What is the median of the finish times of the participants?

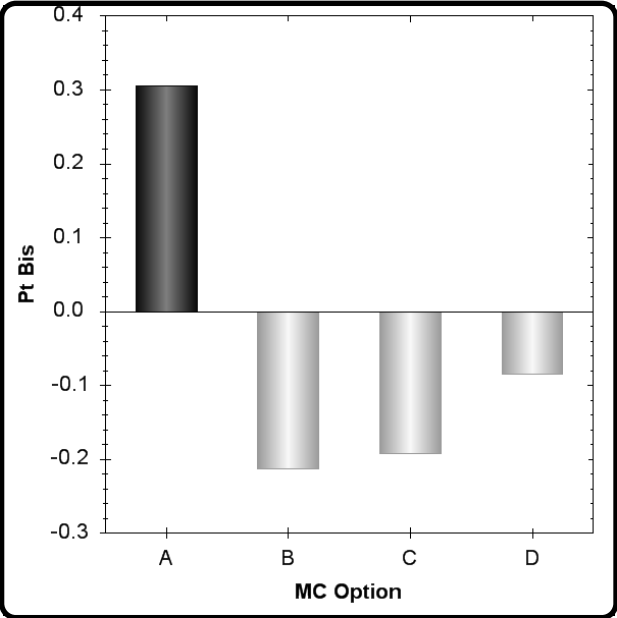
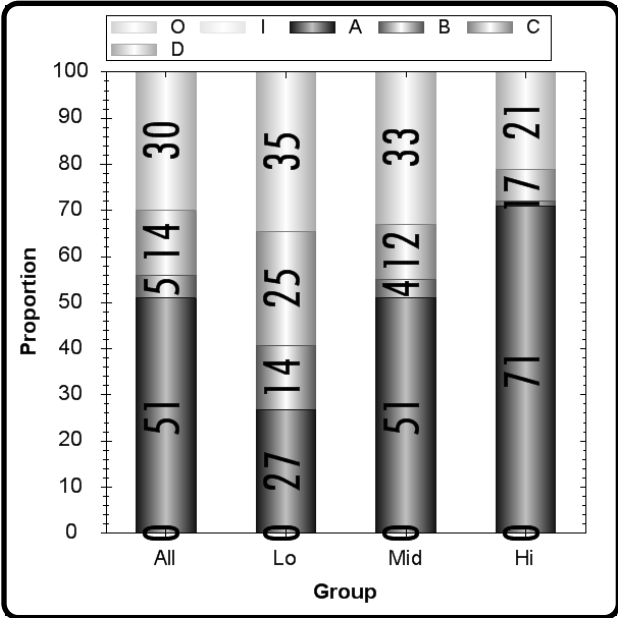
- A.** 6:30:20
- B.** 6:53:05
- C.** 6:30:10
- D.** 6:52:06

Grade 7	Math	CID 3415313
Item # 44		Administration OP09
D1a		

Type	Max Points	Correct Answer	N Count	Item Mean	Discrimination
Multiple Choice	1	A	6398	0.508	0.306

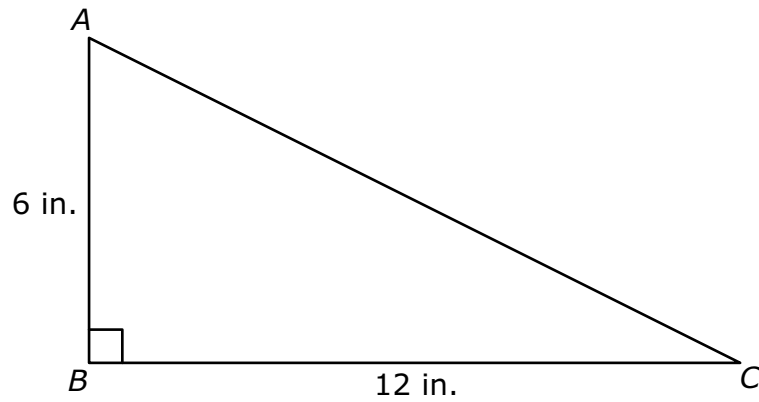
	A	B	C	D	Omit	Invalid
All	51	5	14	30	0	0
Low Scorers	27	14	25	35	0	0
Middle Scorers	51	4	12	33	0	0
High Scorers	71	1	7	21	0	0

MC Item Option Discriminations			
A	B	C	D
0.306	-0.213	-0.192	-0.085



Notes:
Am. Indian students may perform better on this item as compared to White students. (B)

Triangle ABC is shown below.



Part A. What is the area of $\triangle ABC$? Write your answer in the space provided. Show or explain how you got your answer.

Area of $\triangle ABC$: _____ in.²

Part B. In the space provided, draw $\triangle ABC$. Then draw a new point, D , at the midpoint of \overline{BC} . Next draw segment \overline{AD} .

What is the area of $\triangle ABD$? Write your answer in the space provided. Show or explain how you got your answer.

Area of $\triangle ABD$: _____ in.²

Grade 7

Math

CID 3339591

Item # 68

Administration OP08

M2b

Type
Short Answer

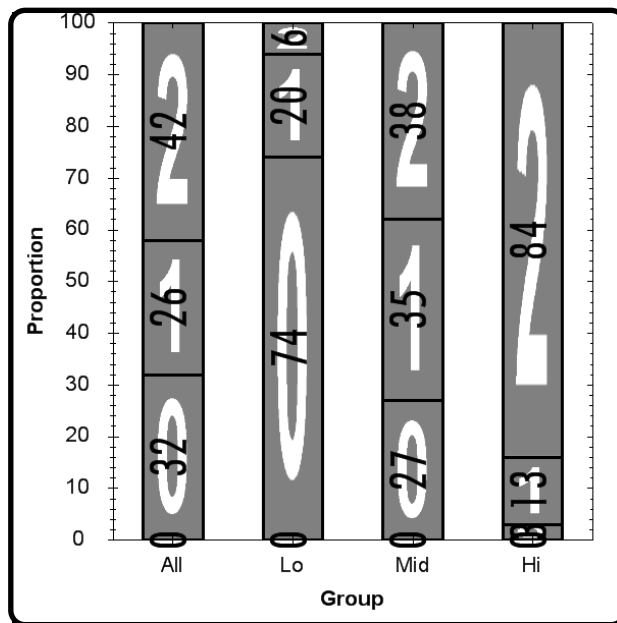
Max Points
2

N Count
6147

Item Mean
1.095

Discrimination
0.604

	0	1	2	Omit	Invalid
All	32	26	42	0	0
Low Scorers	74	20	6	0	0
Middle Scorers	27	35	38	0	0
High Scorers	3	13	84	0	0



Notes:

