



**PAWS  
Reading  
Grade 5**

**Released Items  
With Data**

**2009**

Copyright © **2010** by the Wyoming Department of Education.

All rights reserved. No part of this publication may be reproduced or transmitted in any form or by any means, electronic or mechanical, including photocopy, recording, or any information storage and retrieval system, without permission in writing from the Wyoming Department of Education.

*Pearson* and the *Pearson* logo are trademarks, in the U.S. and/or other countries, of Pearson Education, Inc. or its affiliate(s).

Portions of this work were previously published.

Printed in the United States of America.



Imagine that your class is looking for new ways to study wild animals. Read "Capture a Wild Animal . . . Track!" as if you had been assigned to write a report about it. After reading the article, answer the question as if you were preparing your report.

## Capture a Wild Animal . . . Track!



### Introduction

Most everyone agrees that wild animals are fascinating. Because they are wild, however, it can be difficult to study them. One way you can learn about wild animals is by making plaster casts of their tracks. Even if you never see the animals that made the tracks, you can study the casts to discover interesting things about them.

### What you need

- A bag or box of plaster of Paris (You will use about 1 cup of plaster for each cast that you make.)
- A large plastic bottle with a tight-fitting lid (The bottle should be big enough to hold 3 cups of water.)
- A strip of thin, flexible cardboard 2 inches wide and about 16 inches long
- A large paper clip
- A small, soft brush (like a paintbrush)
- A small bucket
- A one-cup measuring cup
- A large spoon
- A few paper towels
- A sturdy cloth sack or small backpack
- A toothbrush

**Directions****Before looking for animal tracks**

1. Think of a place near your home where wild animals might live. This might be in a park, in the woods, along a creek or near a pond. You will find the best tracks in mud or damp sand.
2. Ask a parent or guardian to go with you to the place you choose.
3. Fill the bottle with clean water and screw the lid on tightly.
4. Pack the bottle and other materials in the backpack or cloth sack. Now you are ready to search for some tracks.

**When you find animal tracks**

1. Using the soft brush, carefully brush away loose twigs, pebbles, and leaves from one footprint of the animal track.
2. Form a circle around the footprint with the cardboard strip and clip the ends together with the paper clip. Gently press the edge of the strip into the ground. The cardboard circle will keep the plaster from spreading out too far.
3. In the bucket, mix one cup of plaster of Paris with two to three cups of water. Add the water and stir carefully until the mixture is about as thick as pancake batter. If the mixture gets too thin, add a little more plaster.
4. Quickly pour the mixture onto the print until it is about one inch thick.
5. Wait for the plaster to harden enough to pick up. Depending on the weather, this will take from thirty minutes to one hour.
6. When the plaster is hard, remove the cardboard strip. Then carefully lift the plaster cast from the ground, brush off any dirt or sand, and wrap the cast in the paper towels. Carry it carefully to your home.

**When you get home**

1. Put the cast in a safe place and let it dry for several days.
2. When the cast is completely dry, gently clean it with the toothbrush and a little water.
3. On the back of the cast, write the name of the animal and the date you made the cast. If you need help identifying the animal print, look for pictures in books and on Web sites.

3337093

**When mixing the plaster and water, which detail is most important to remember?**

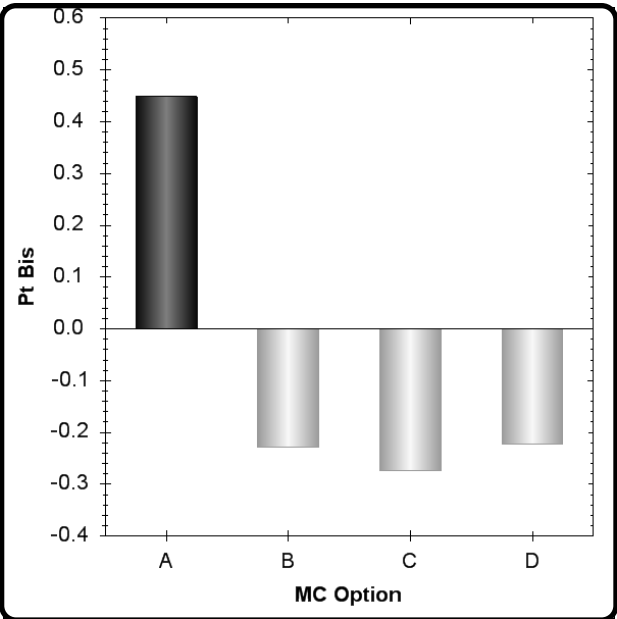
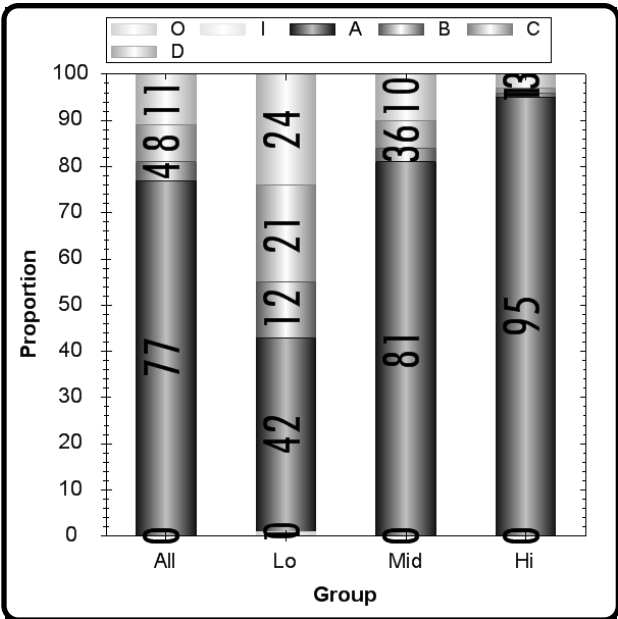
- A.** It should be as thick as pancake batter.
- B.** Try to add as much water as possible.
- C.** Get the paper towels ready to wrap the cast.
- D.** The cast will take a long time to dry.

**Grade 5** **Reading** **CID 3337093**  
**Item # 22** **Administration OP06**  
**R.05.F.1**  
**Psg : Capture a Wild Animal Track (FUN OP2006)**

Type	Max Points	Correct Answer	N Count	Item Mean	Discrimination
Multiple Choice	1	A	5972	0.767	0.449

	A	B	C	D	Omit	Invalid
All	77	4	8	11	0	0
Low Scorers	42	12	21	24	1	0
Middle Scorers	81	3	6	10	0	0
High Scorers	95	1	1	3	0	0

MC Item Option Discriminations			
A	B	C	D
0.449	-0.229	-0.274	-0.223



Notes:

Non LEP students may perform better on this item as compared to LEP students. (B)

3337092

**Why is it important for the cardboard strip to be flexible?**

- A.** It has to be pressed into the ground.
- B.** It has to be formed into a circle.
- C.** It has to keep the plaster from spreading.
- D.** It has to pull away from the cast.

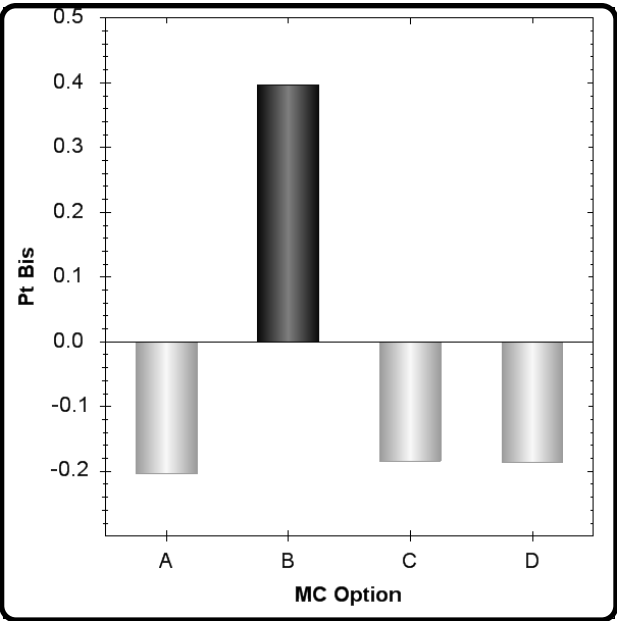
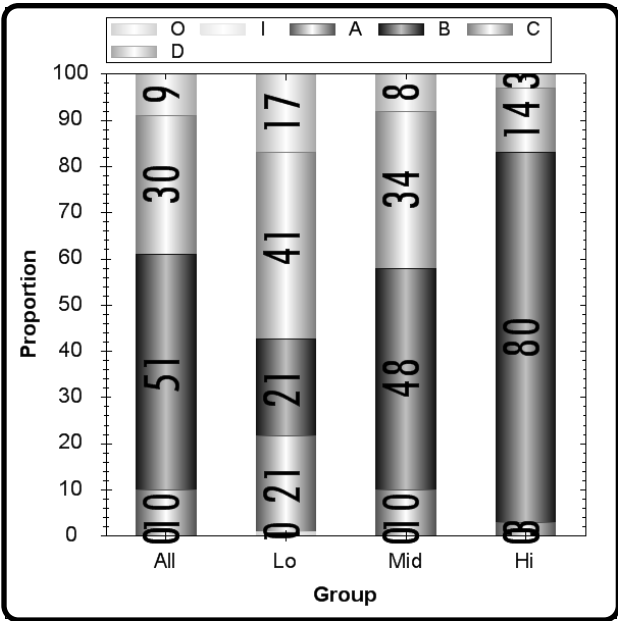


**Grade 5** **Reading** **CID 3337092**  
**Item # 21** **Administration OP06**  
**R.05.F.1**  
**Psg : Capture a Wild Animal Track (FUN OP2006)**

Type	Max Points	Correct Answer	N Count	Item Mean	Discrimination
Multiple Choice	1	B	5972	0.509	0.397

	A	B	C	D	Omit	Invalid
All	10	51	30	9	0	0
Low Scorers	21	21	41	17	1	0
Middle Scorers	10	48	34	8	0	0
High Scorers	3	80	14	3	0	0

MC Item Option Discriminations			
A	B	C	D
-0.204	0.397	-0.184	-0.186



Notes:

Non LEP students may perform better on this item as compared to LEP students. (B)

3337090

**Why is the toothbrush listed after the backpack?**

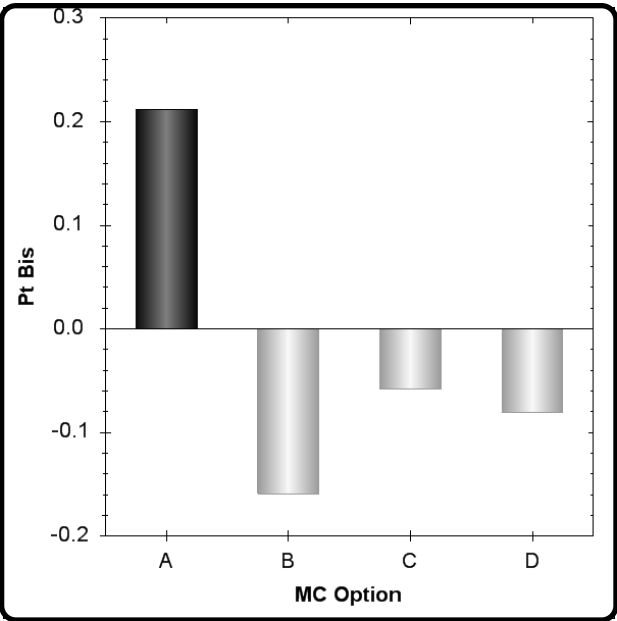
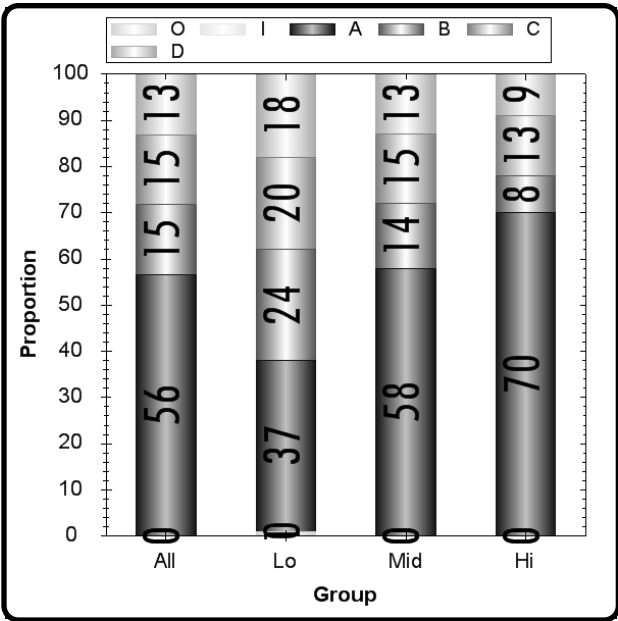
- A.** The toothbrush is the last item you use.
- B.** The toothbrush is the smallest item that you need.
- C.** You can easily find the toothbrush when you need it.
- D.** You should not pack the toothbrush under the other items.

**Grade 5** **Reading** **CID 3337090**  
**Item # 24** **Administration OP06**  
**R.05.F.2**  
**Psg : Capture a Wild Animal Track (FUN OP2006)**

Type	Max Points	Correct Answer	N Count	Item Mean	Discrimination
Multiple Choice	1	A	5972	0.564	0.212

	A	B	C	D	Omit	Invalid
All	56	15	15	13	0	0
Low Scorers	37	24	20	18	1	0
Middle Scorers	58	14	15	13	0	0
High Scorers	70	8	13	9	0	0

MC Item Option Discriminations			
A	B	C	D
0.212	-0.159	-0.058	-0.081



Notes:  
 Low discrimination. Check item and key (if MC item) for ambiguity.

3337088

**Why is making a plaster cast a good way to study animals that are wild?**

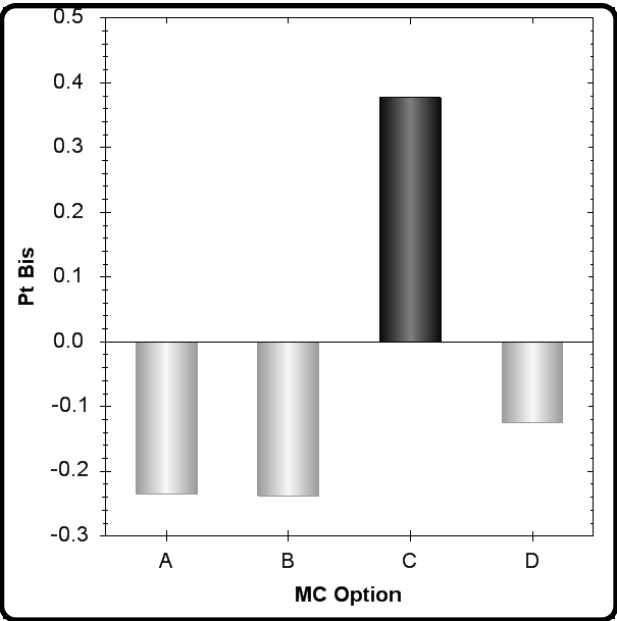
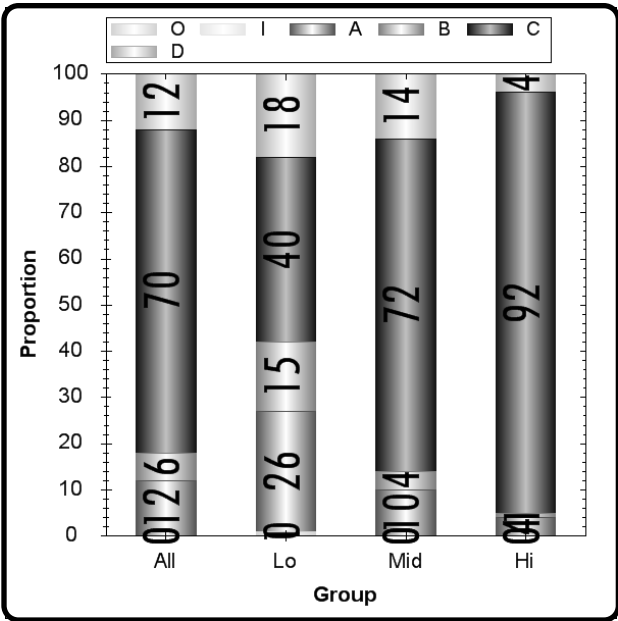
- A.** You can find wild animal tracks anywhere.
- B.** Wild animals leave better tracks than other animals.
- C.** You can find tracks even if you cannot see the animals.
- D.** Wild animals are more interesting than other animals.

**Grade 5** **Reading** **CID 3337088**  
**Item # 20** **Administration OP06**  
**R.05.F.2**  
**Psg : Capture a Wild Animal Track (FUN OP2006)**

Type	Max Points	Correct Answer	N Count	Item Mean	Discrimination
Multiple Choice	1	C	5971	0.704	0.377

	A	B	C	D	Omit	Invalid
All	12	6	70	12	0	0
Low Scorers	26	15	40	18	1	0
Middle Scorers	10	4	72	14	0	0
High Scorers	4	1	92	4	0	0

MC Item Option Discriminations			
A	B	C	D
-0.235	-0.238	0.377	-0.125



Notes:

White students may perform better on this item as compared to Am. Indian students. (B)

**Why is it important for the plastic bottle to have a tight-fitting lid? Use details from the passage to support your answer.**

---

---

---

---

---

---

---

---

---

---

Grade 5

Reading

CID 3337096

Item # 26

Administration OP06

R.05.F.1

Psg : Capture a Wild Animal Track (FUN OP2006)

Type  
Open Ended

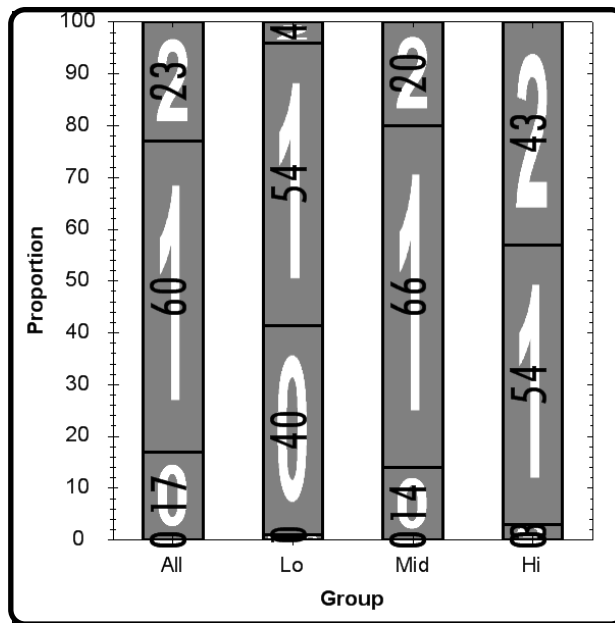
Max Points  
2

N Count  
5957

Item Mean  
1.059

Discrimination  
0.416

	0	1	2	Omit	Invalid
All	17	60	23	0	0
Low Scorers	40	54	4	1	0
Middle Scorers	14	66	20	0	0
High Scorers	3	54	43	0	0



Notes:

