



**PAWS  
Mathematics  
Grade 5**

**Released Items  
With Data**

**2009**

Copyright © **2010** by the Wyoming Department of Education.

All rights reserved. No part of this publication may be reproduced or transmitted in any form or by any means, electronic or mechanical, including photocopy, recording, or any information storage and retrieval system, without permission in writing from the Wyoming Department of Education.

*Pearson* and the *Pearson* logo are trademarks, in the U.S. and/or other countries, of Pearson Education, Inc. or its affiliate(s).

Portions of this work were previously published.

Printed in the United States of America.



3415583

**An equation is shown below.**

$$93 - y = 48$$

**What value of  $y$  makes the equation above true?**

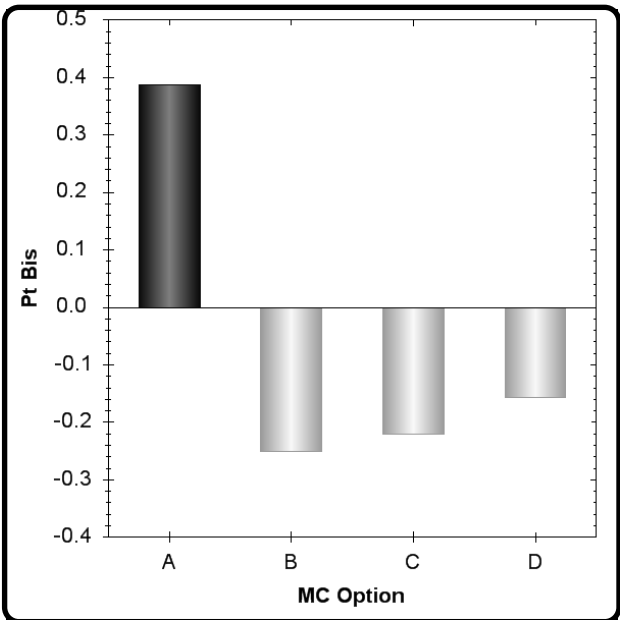
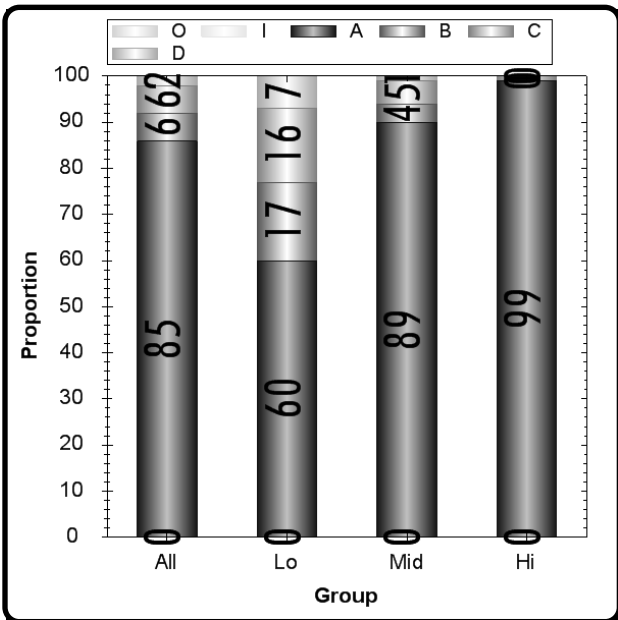
- A. 45**
- B. 46**
- C. 55**
- D. 56**

Grade 5 Math CID 3415583  
 Item # 60 Administration OP09  
 A2a

Type: Multiple Choice  
 Max Points: 1  
 Correct Answer: A  
 N Count: 6588  
 Item Mean: 0.853  
 Discrimination: 0.388

	A	B	C	D	Omit	Invalid
All	85	6	6	2	0	0
Low Scorers	60	17	16	7	0	0
Middle Scorers	89	4	5	1	0	0
High Scorers	99	0	1	0	0	0

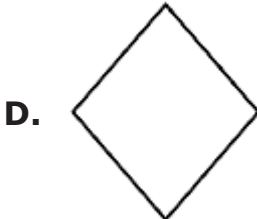
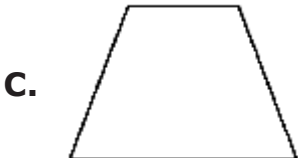
MC Item Option Discriminations			
A	B	C	D
0.388	-0.251	-0.221	-0.156



Notes:

3509204

**In math class, Macey drew a shape with 4 right angles and 4 congruent sides. Which of the following could be the shape Macey drew?**

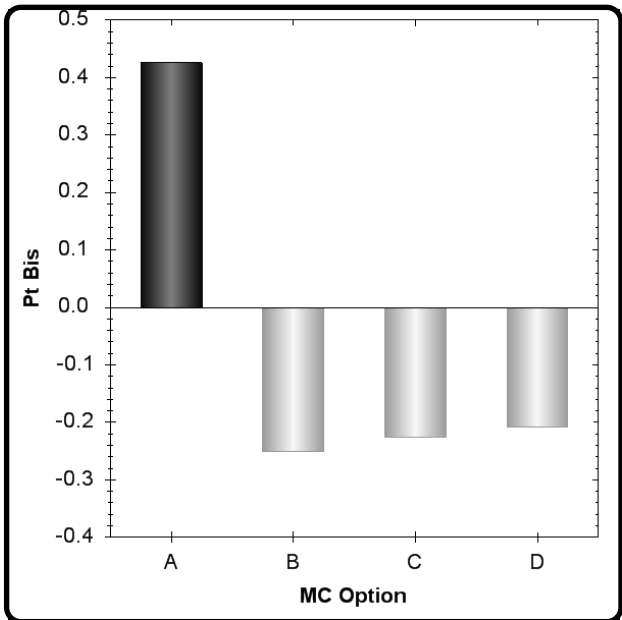
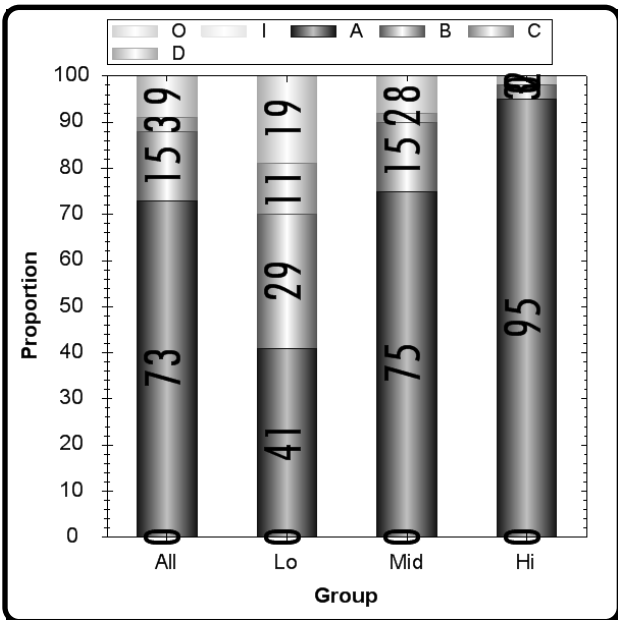


**Grade 5** **Math** **CID 3509204**  
**Item # 59** **G2a** **Administration OP09**

Type	Max Points	Correct Answer	N Count	Item Mean	Discrimination
Multiple Choice	1	A	6588	0.730	0.426

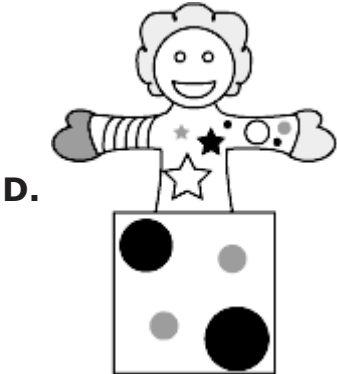
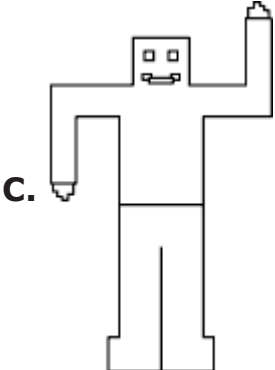
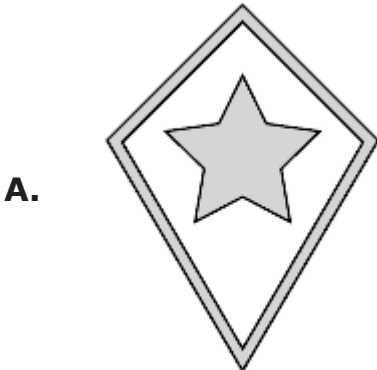
	A	B	C	D	Omit	Invalid
All	73	15	3	9	0	0
Low Scorers	41	29	11	19	0	0
Middle Scorers	75	15	2	8	0	0
High Scorers	95	3	0	2	0	0

MC Item Option Discriminations			
A	B	C	D
0.426	-0.251	-0.226	-0.209



Notes:

Which of the following toys appears to have a line of symmetry?



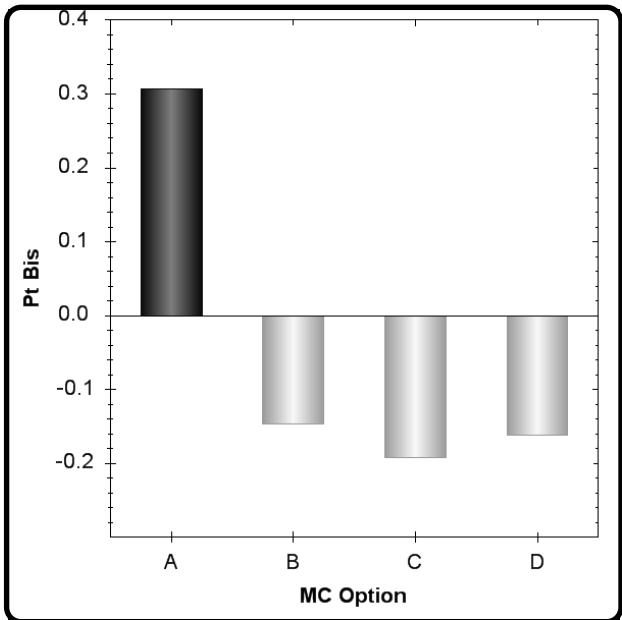
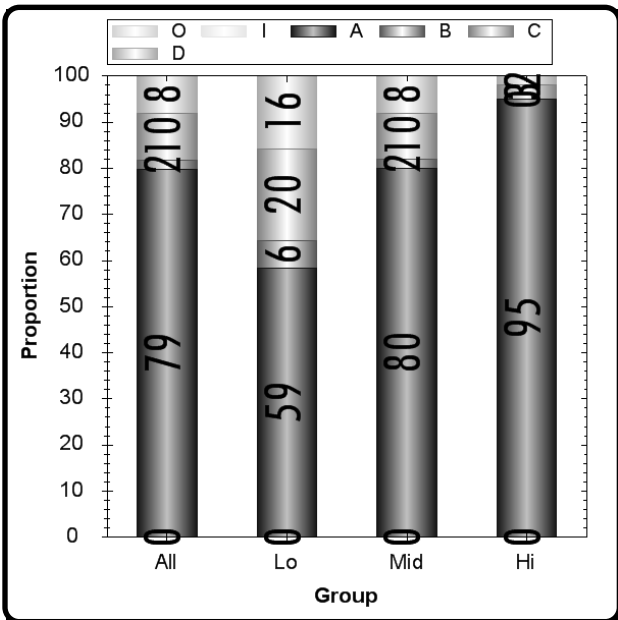


**Grade 5** **Math** **CID 3509207**  
**Item # 53** **G3a** **Administration OP09**

Type	Max Points	Correct Answer	N Count	Item Mean	Discrimination
Multiple Choice	1	A	6588	0.792	0.307

	A	B	C	D	Omit	Invalid
All	79	2	10	8	0	0
Low Scorers	59	6	20	16	0	0
Middle Scorers	80	2	10	8	0	0
High Scorers	95	0	3	2	0	0

MC Item Option Discriminations			
A	B	C	D
0.307	-0.147	-0.192	-0.162



Notes:

3379772

**Mr. Mackay gave his art students an assignment to draw a portrait of their best friend. He gave each student a rectangular sheet of drawing paper that was 23 inches long and 15 inches wide. What is the area of the piece of drawing paper that each student received?**

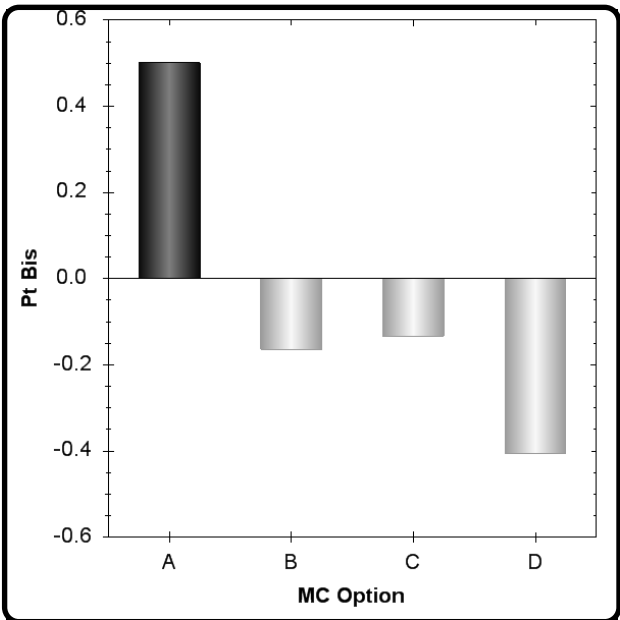
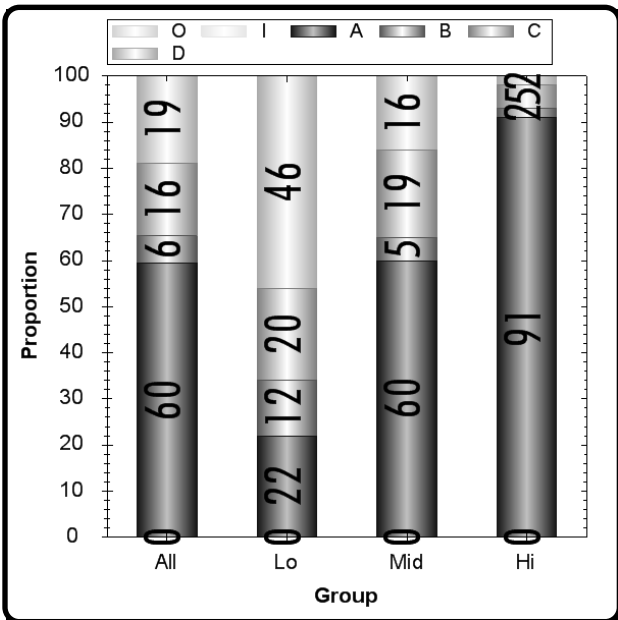
- A.** 345 sq in.
- B.** 325 sq in.
- C.** 76 sq in.
- D.** 38 sq in.

Grade 5 Item # 27	Math M2a	CID 3379772 Administration OP09
----------------------	-------------	------------------------------------

Type	Max Points	Correct Answer	N Count	Item Mean	Discrimination
Multiple Choice	1	A	6588	0.597	0.501

	A	B	C	D	Omit	Invalid
All	60	6	16	19	0	0
Low Scorers	22	12	20	46	0	0
Middle Scorers	60	5	19	16	0	0
High Scorers	91	2	5	2	0	0

MC Item Option Discriminations			
A	B	C	D
0.501	-0.164	-0.133	-0.406



Notes:

3415591

**The prices of Jimmy's lunches for 5 days last week are listed below.**

**\$2.24, \$1.78, \$2.16, \$1.88, \$2.24**

**What is the mode of the prices of Jimmy's lunches last week?**

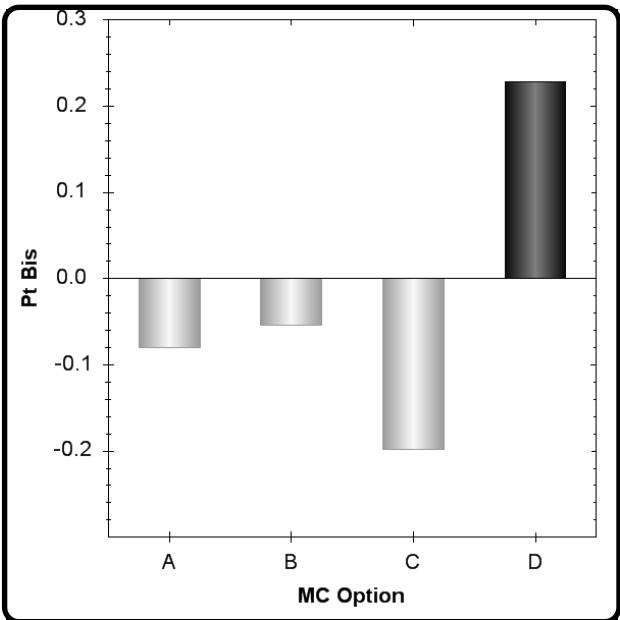
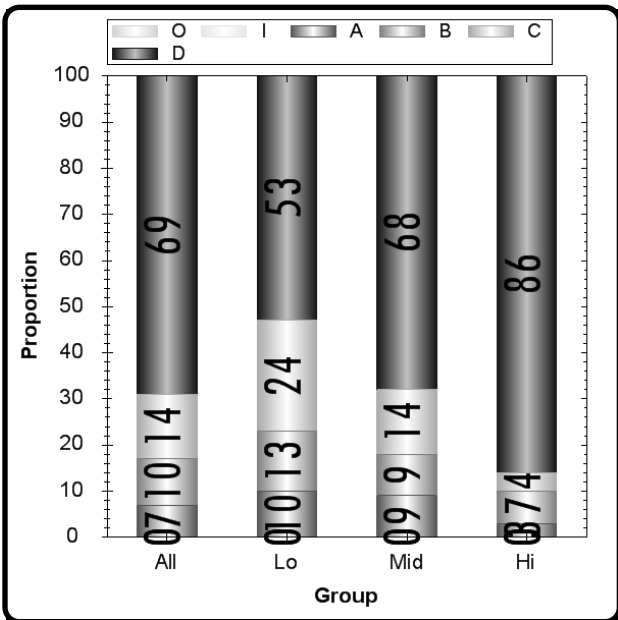
- A. \$0.46**
- B. \$2.06**
- C. \$2.16**
- D. \$2.24**

Grade 5 Item # 18	Math D1a	CID 3415591 Administration OP09
----------------------	-------------	------------------------------------

Type	Max Points	Correct Answer	N Count	Item Mean	Discrimination
Multiple Choice	1	D	6588	0.692	0.228

	A	B	C	D	Omit	Invalid
All	7	10	14	69	0	0
Low Scorers	10	13	24	53	0	0
Middle Scorers	9	9	14	68	0	0
High Scorers	3	7	4	86	0	0

MC Item Option Discriminations			
A	B	C	D
-0.080	-0.054	-0.198	0.228



Notes:  
 Low discrimination. Check item and key (if MC item) for ambiguity.

**Henry bought a notebook for \$2.50, a box of markers for \$2.59, and a lunchbox. The total cost of the three things he bought was \$21.20.**

**Part A. Using  $c$  to represent the cost of the lunchbox, write a number sentence that can be used to find the cost of the lunchbox Henry bought. Write the number sentence on the line below.**

**Number Sentence:** \_\_\_\_\_

**Part B. Using the number sentence you wrote in part A, find the cost of the lunchbox Henry bought.**

**Cost of Lunchbox:** \_\_\_\_\_

Grade 5

Math

CID 10000008188

Item # 68

Administration OP09

A2a

Type  
Short Answer

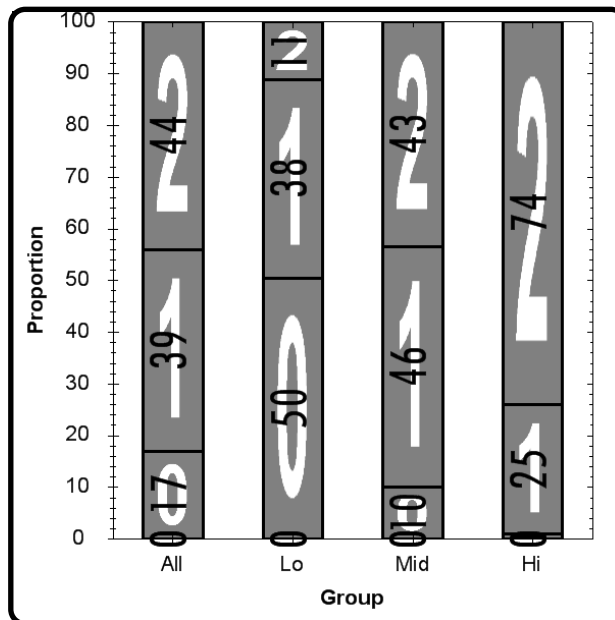
Max Points  
2

N Count  
6588

Item Mean  
1.271

Discrimination  
0.547

	0	1	2	Omit	Invalid
All	17	39	44	0	0
Low Scorers	50	38	11	0	0
Middle Scorers	10	46	43	0	0
High Scorers	1	25	74	0	0



Notes:

Non SPED students may perform better on this item as compared to SPED students. (B)

