



**PAWS  
Reading  
Grade 4**

**Released Items  
With Data**

**2009**

Copyright © **2010** by the Wyoming Department of Education.

All rights reserved. No part of this publication may be reproduced or transmitted in any form or by any means, electronic or mechanical, including photocopy, recording, or any information storage and retrieval system, without permission in writing from the Wyoming Department of Education.

*Pearson* and the *Pearson* logo are trademarks, in the U.S. and/or other countries, of Pearson Education, Inc. or its affiliate(s).

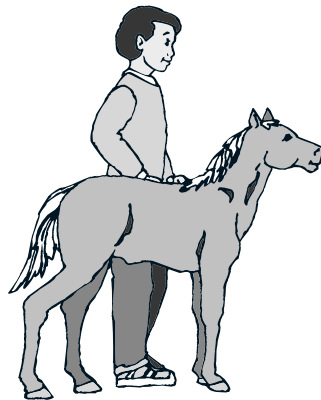
Portions of this work were previously published.

Printed in the United States of America.



Imagine that your class is studying unusual pets. Read "Horse or Pony?" as if you were going to give a report about one unusual pet. After reading the passage, answer the questions as if you were working on your report.

## Horse or Pony?



- 1 Have you ever seen a baby horse so small that you could pick it up all by yourself? There is a special kind of horse that is small, and it is not a pony. It is called a miniature horse. When a miniature horse is born, it weighs only 20 pounds or less and is only between 16 and 20 inches tall. Many dogs are bigger than baby miniature horses!
- 2 Miniature horses are different from ponies and regular horses in many ways. One of the main differences is their height. All kinds of horses and ponies are measured in "hands" and inches. A hand is equal to about four inches. Most horses are 15.1 or more hands tall. That means that they are 15 hands and 1 inch tall. Most ponies are shorter than 14.2 hands. Miniature horses are less than 8.2 hands, or 34 inches, tall. That is shorter than the height of a yardstick!
- 3 Another difference between miniature horses and ponies is their weight. For example, an adult Shetland pony weighs about 300 pounds. Adult miniature horses weigh between 100 and 225 pounds. Ponies are very strong. They can carry or pull weight that is much heavier than they are. Miniature horses cannot carry as much weight as ponies can. To ride a miniature horse, you must weigh 60 pounds or less. However, miniature horses can pull more weight than they can carry. Many people like to ride in small carts pulled by miniature horses.

- 4 In addition, newborn miniature horses look different from newborn ponies. A baby pony's body and legs look much the same as they will when the pony is an adult, but the miniature horse is born with long, gangly legs. At this stage of its life, its legs are too long for its body. However, the miniature horse's body will grow much faster than its legs. Therefore, once the miniature horse is fully grown, its legs will fit its body perfectly. Also, with its short legs, a pony walks with short, quick steps. The miniature horse, with its longer legs, walks with longer and more graceful steps.
- 5 Some people raise miniature horses to be pets. They are very gentle animals, and people of all ages like to play with them. Their small size makes them safe for children. Some miniature horses are even being trained to work with blind people.
- 6 Some people raise miniature horses to compete in horse shows. To compete in official American Miniature Horse shows, a miniature horse must be just the right size. For example, a weanling is a young horse that begins to eat grass and grain rather than nurse from its mother. When it becomes a weanling, a miniature horse must be no taller than 30 inches. On its first birthday, the miniature horse can be no taller than 32 inches. By the time the horse is five years old, it can be no taller than 34 inches. The smallest miniature horse on record was only 14 inches high and weighed about 20 pounds. His name was Pumpkin.
- 7 To compete in American Miniature Horse shows, a miniature horse's body must look like a regular horse's body instead of like a pony's body. Ponies usually have short legs and chubby bodies. Their bellies are very round, and they have short, thick necks. A miniature horse is not shaped like a pony at all. Its legs are just the right length for its sleek body. Its neck is neither thick nor short.
- 8 Whether they are raised as pets or as show animals, all miniature horses are beautiful animals.

3350940

**According to the passage, which is true for both ponies and miniature horses?**

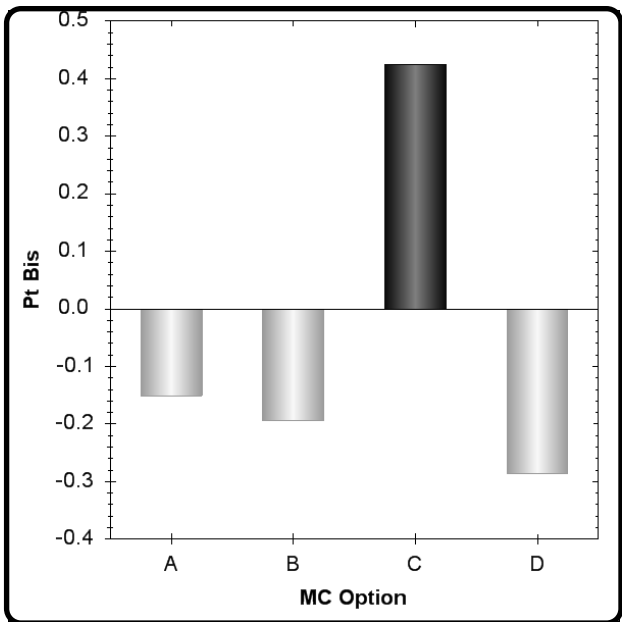
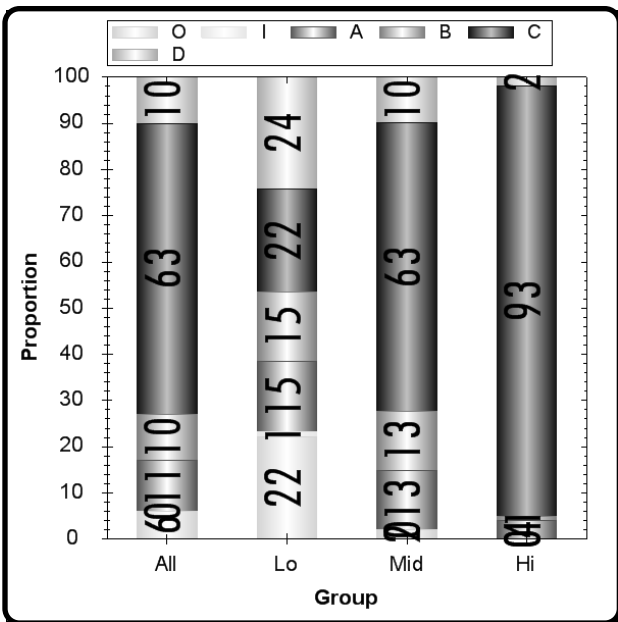
- A.** They walk with short steps.
- B.** They are trained to work with blind people.
- C.** They are measured in hands.
- D.** They weigh about 300 pounds when they are adults.

**Grade 4** **Reading** **CID 3350940**  
**Item # 33** **R.04.E.1** **Administration FT05**  
**Psg : Horse or Pony?** **(EXP)**

Type	Max Points	Correct Answer	N Count	Item Mean	Discrimination
Multiple Choice	1	C	854	0.666	0.424

	A	B	C	D	Omit	Invalid
All	11	10	63	10	6	0
Low Scorers	15	15	22	24	22	1
Middle Scorers	13	13	63	10	2	0
High Scorers	4	1	93	2	0	0

MC Item Option Discriminations			
A	B	C	D
-0.151	-0.194	0.424	-0.287



Notes:

3350942

**Which information from the passage shows that miniature horses are not as strong as ponies?**

- A.** Miniature horses are less than 34 inches tall.
- B.** The smallest miniature horse was 14 inches tall.
- C.** Miniature horses weigh between 100 and 225 pounds.
- D.** Miniature horses can carry riders that weigh 60 pounds or less.

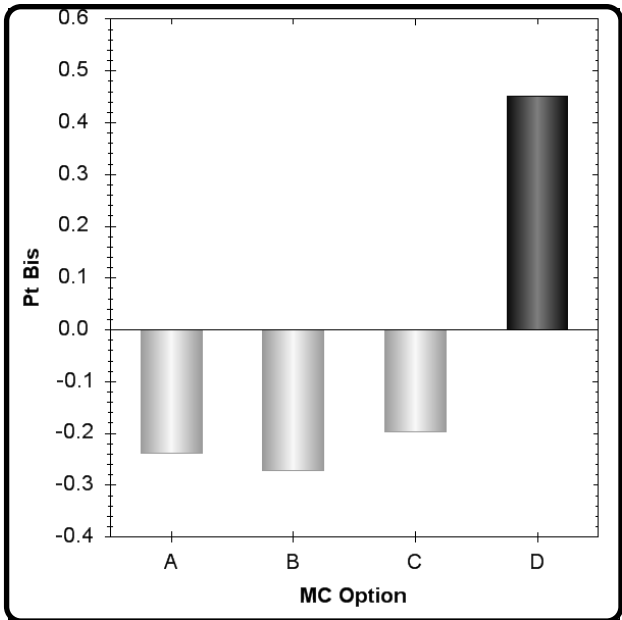
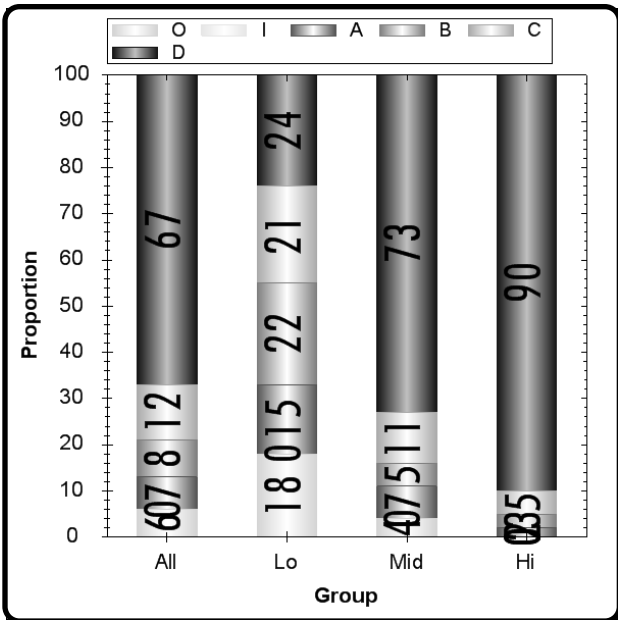


**Grade 4** **Reading** **CID 3350942**  
**Item # 33** **R.04.E.1** **Administration FT05**  
**Psg : Horse or Pony?** **(EXP)**

Type	Max Points	Correct Answer	N Count	Item Mean	Discrimination
Multiple Choice	1	D	886	0.710	0.452

	A	B	C	D	Omit	Invalid
All	7	8	12	67	6	0
Low Scorers	15	22	21	24	18	0
Middle Scorers	7	5	11	73	4	0
High Scorers	2	3	5	90	0	0

MC Item Option Discriminations			
A	B	C	D
-0.238	-0.272	-0.197	0.452



Notes:

3350951

**What would be the best heading for Paragraph 6?**

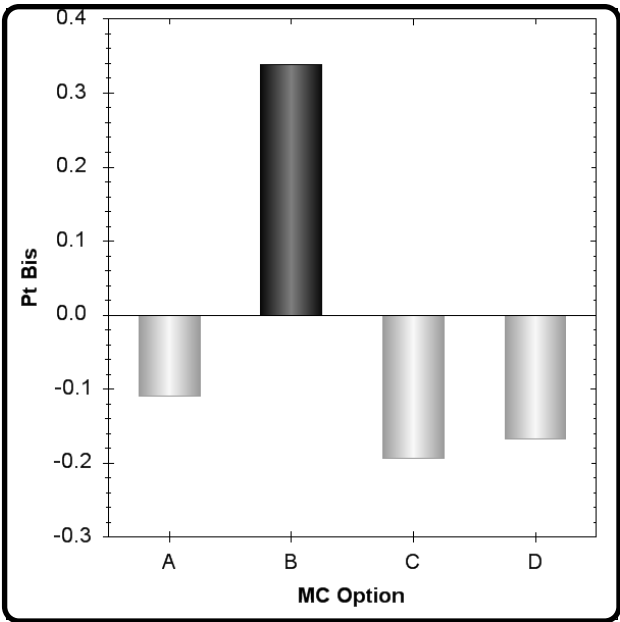
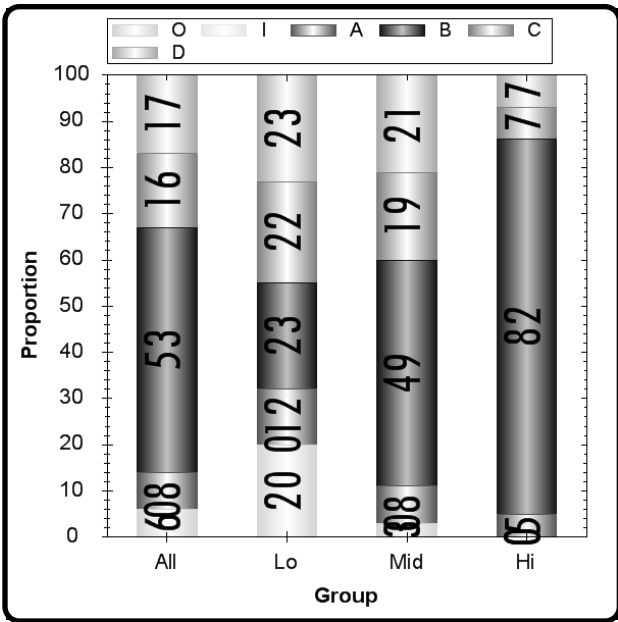
- A.** "Special Food for a Weanling"
- B.** "The Right Size for Horse Shows"
- C.** "The Smallest Miniature Horse on Record"
- D.** "Miniature Horses and Ponies"

**Grade 4** **Reading** **CID 3350951**  
**Item # 34** **R.04.E.1** **Administration FT05**  
**Psg : Horse or Pony?** **(EXP)**

Type	Max Points	Correct Answer	N Count	Item Mean	Discrimination
Multiple Choice	1	B	1738	0.562	0.339

	A	B	C	D	Omit	Invalid
All	8	53	16	17	6	0
Low Scorers	12	23	22	23	20	0
Middle Scorers	8	49	19	21	3	0
High Scorers	5	82	7	7	0	0

MC Item Option Discriminations			
A	B	C	D
-0.110	0.339	-0.194	-0.167



Notes:

3350947

**What is the purpose of the rules for American Miniature Horse shows?**

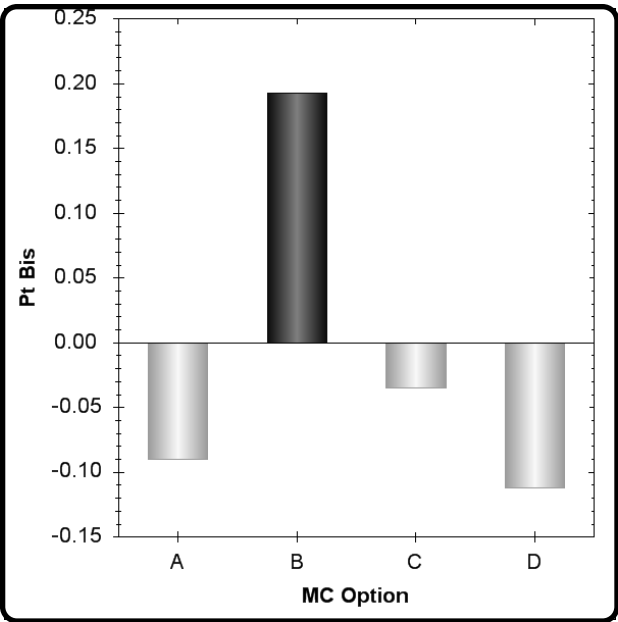
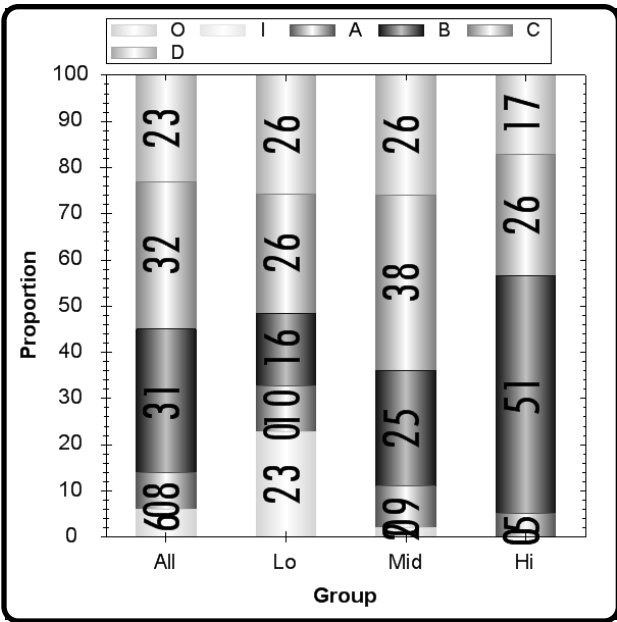
- A.** To help get the best judges for shows
- B.** To keep out miniature horses that are too big
- C.** To help judges tell the difference between horses and ponies
- D.** To keep from making miniature horses carry too much weight

**Grade 4** **Reading** **CID 3350947**  
**Item # 35** **R.04.E.3** **Administration FT05**  
**Psg : Horse or Pony?** **(EXP)**

Type	Max Points	Correct Answer	N Count	Item Mean	Discrimination
Multiple Choice	1	B	853	0.325	0.193

	A	B	C	D	Omit	Invalid
All	8	31	32	23	6	0
Low Scorers	10	16	26	26	23	0
Middle Scorers	9	25	38	26	2	0
High Scorers	5	51	26	17	0	0

MC Item Option Discriminations			
A	B	C	D
-0.090	0.193	-0.035	-0.112



Notes:  
 Low discrimination. Check item and key (if MC item) for ambiguity.

3350946

**What is the main idea of this passage?**

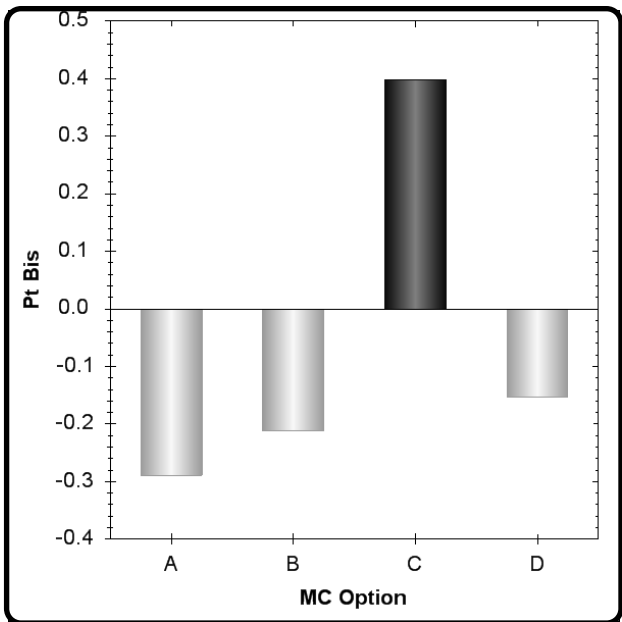
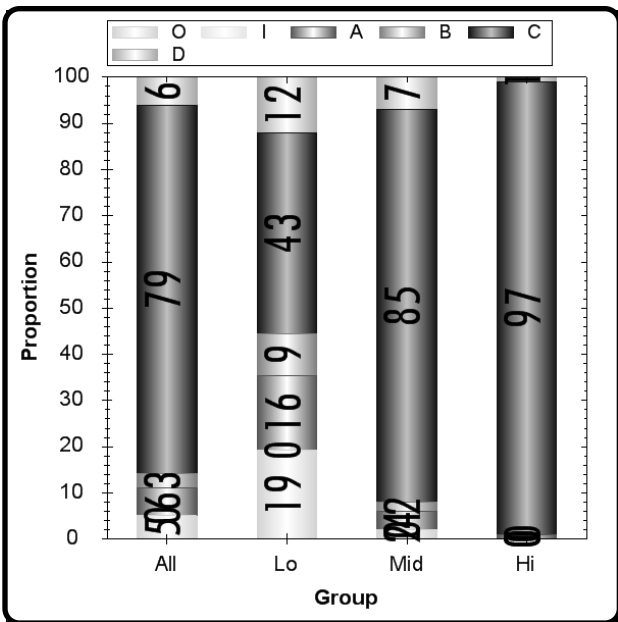
- A.** How miniature horses compete in horse shows
- B.** How ponies are stronger than miniature horses
- C.** How miniature horses and ponies are different
- D.** How ponies and miniature horses look when they are born

**Grade 4** **Reading** **CID 3350946**  
**Item # 30** **R.04.E.1** **Administration FT05**  
**Psg : Horse or Pony?** **(EXP)**

Type	Max Points	Correct Answer	N Count	Item Mean	Discrimination
Multiple Choice	1	C	1751	0.837	0.398

	A	B	C	D	Omit	Invalid
All	6	3	79	6	5	0
Low Scorers	16	9	43	12	19	0
Middle Scorers	4	2	85	7	2	0
High Scorers	1	0	97	1	0	0

MC Item Option Discriminations			
A	B	C	D
-0.289	-0.212	0.398	-0.154



Notes:

Non SPED students may perform better on this item as compared to SPED students. (B)

3350948

**Which person should choose a pony instead of a miniature horse?**

- A.** An adult who wants a pet to pull a cart
- B.** An adult who wants a pet to ride
- C.** An adult who wants a pet to play with children
- D.** An adult who wants a pet to work with blind people

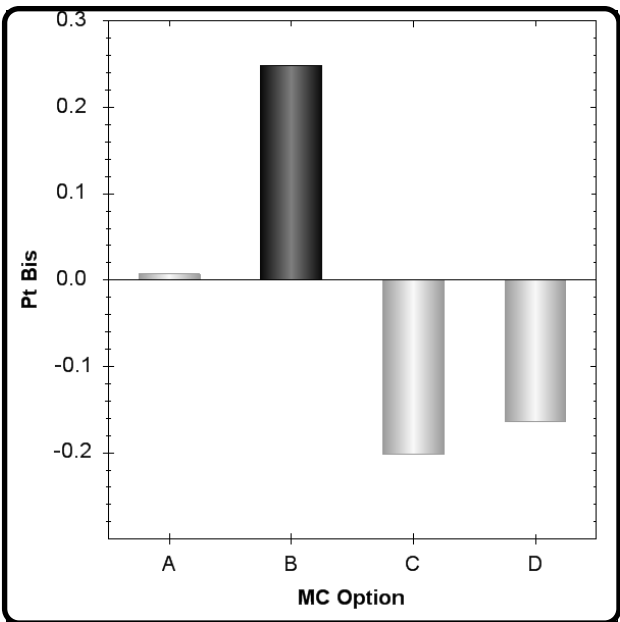
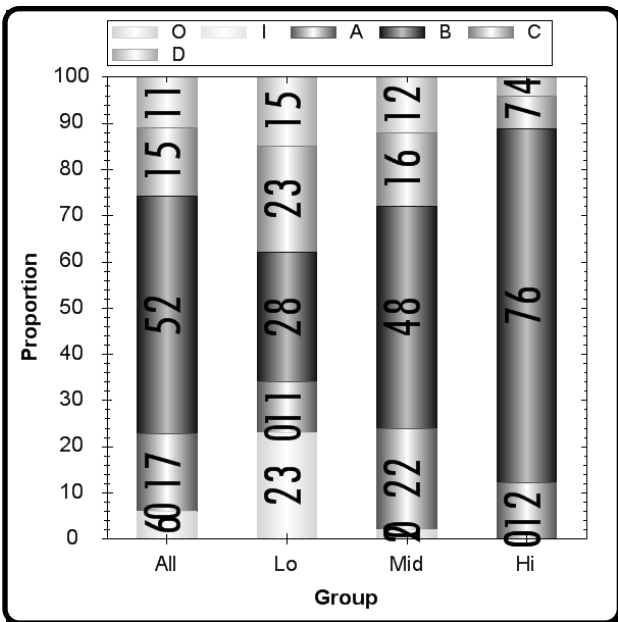


**Grade 4** **Reading** **CID 3350948**  
**Item # 31** **R.04.E.3** **Administration FT05**  
**Psg : Horse or Pony?** **(EXP)**

Type	Max Points	Correct Answer	N Count	Item Mean	Discrimination
Multiple Choice	1	B	855	0.549	0.249

	A	B	C	D	Omit	Invalid
All	17	52	15	11	6	0
Low Scorers	11	28	23	15	23	0
Middle Scorers	22	48	16	12	2	0
High Scorers	12	76	7	4	0	0

MC Item Option Discriminations			
A	B	C	D
0.007	0.249	-0.202	-0.164



Notes:

Low discrimination. Check item and key (if MC item) for ambiguity.

Option A has positive discrimination. Check option for ambiguity/correctness.

