



**PAWS
Mathematics
Grade 4**

**Released Items
With Data**

2009

Copyright © **2010** by the Wyoming Department of Education.

All rights reserved. No part of this publication may be reproduced or transmitted in any form or by any means, electronic or mechanical, including photocopy, recording, or any information storage and retrieval system, without permission in writing from the Wyoming Department of Education.

Pearson and the *Pearson* logo are trademarks, in the U.S. and/or other countries, of Pearson Education, Inc. or its affiliate(s).

Portions of this work were previously published.

Printed in the United States of America.

3509167

The weight in pounds of a fishing boat is shown in expanded form.

2 thousands + 4 tens + 5 ones

What is this number written in standard form?

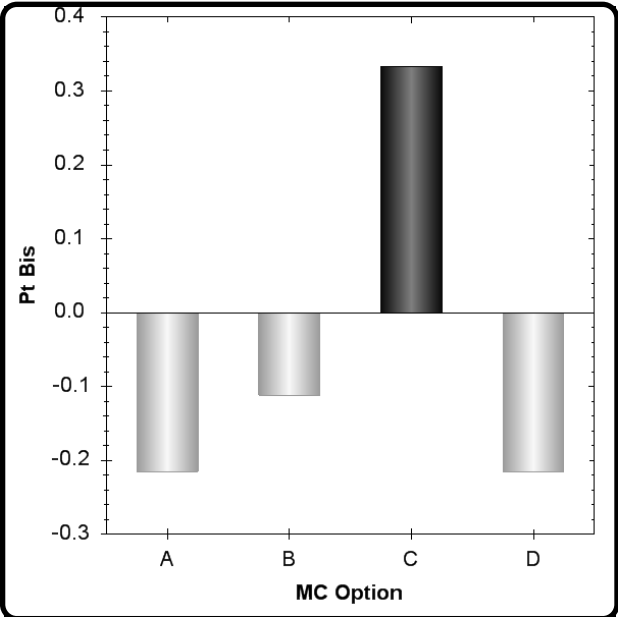
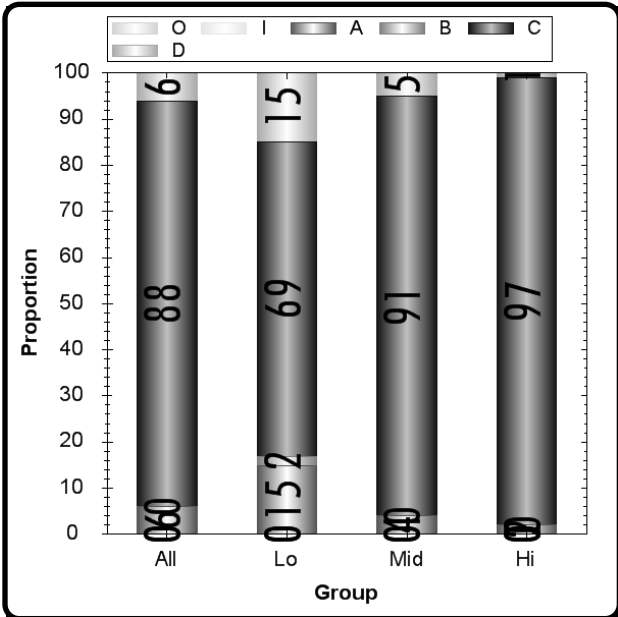
- A.** 245
- B.** 542
- C.** 2,045
- D.** 2,405

| | | |
|----------|------|---------------------|
| Grade 4 | Math | CID 3509167 |
| Item # 5 | | Administration OP09 |
| | N2c | |

| | | | | | |
|-----------------|------------|----------------|---------|-----------|----------------|
| Type | Max Points | Correct Answer | N Count | Item Mean | Discrimination |
| Multiple Choice | 1 | C | 6517 | 0.878 | 0.333 |

| | A | B | C | D | Omit | Invalid |
|----------------|----|---|----|----|------|---------|
| All | 6 | 0 | 88 | 6 | 0 | 0 |
| Low Scorers | 15 | 2 | 69 | 15 | 0 | 0 |
| Middle Scorers | 4 | 0 | 91 | 5 | 0 | 0 |
| High Scorers | 2 | 0 | 97 | 1 | 0 | 0 |

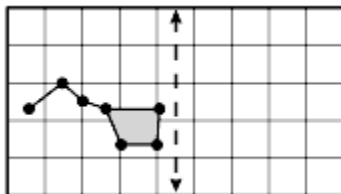
| MC Item Option Discriminations | | | |
|--------------------------------|--------|-------|--------|
| A | B | C | D |
| -0.215 | -0.112 | 0.333 | -0.216 |



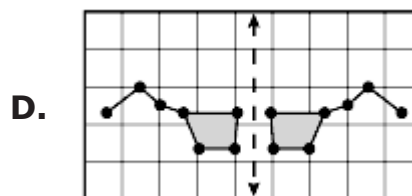
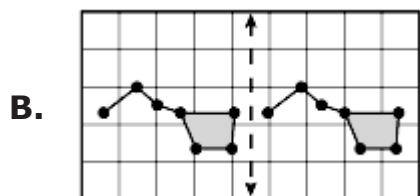
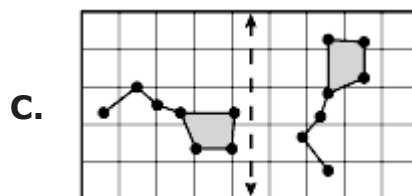
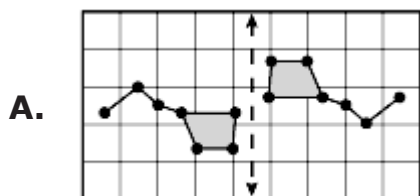
Notes:

Male students may perform better on this item as compared to Female students. (B)

A figure is shown on the grid.



Which picture appears to show a reflection (flip) of the figure across the dashed line?

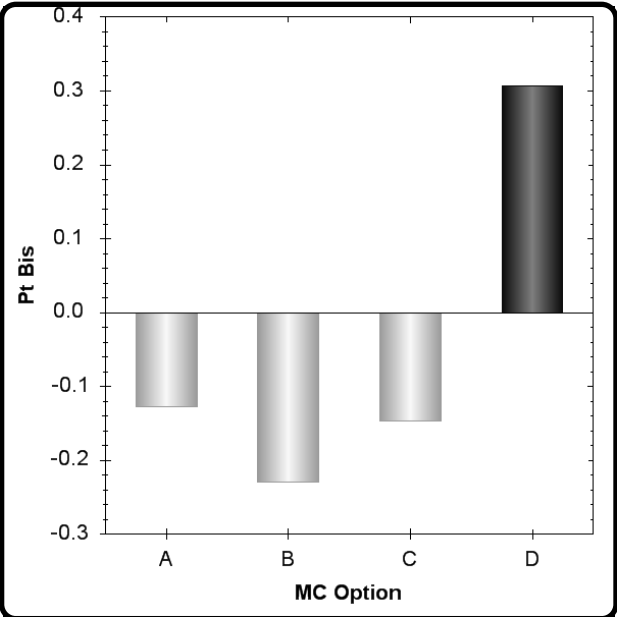
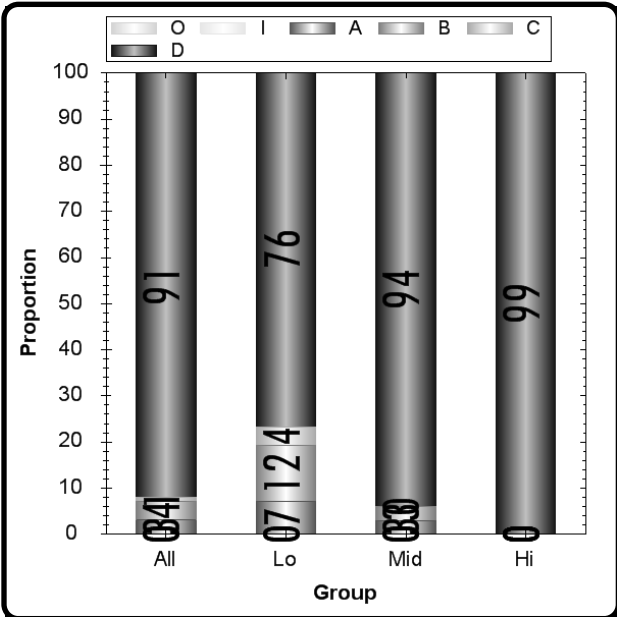


| | | |
|-----------|------|---------------------|
| Grade 4 | Math | CID 3509166 |
| Item # 60 | | Administration OP09 |
| | G3a | |

| | | | | | |
|-----------------|------------|----------------|---------|-----------|----------------|
| Type | Max Points | Correct Answer | N Count | Item Mean | Discrimination |
| Multiple Choice | 1 | D | 6517 | 0.914 | 0.307 |

| | A | B | C | D | Omit | Invalid |
|----------------|---|----|---|----|------|---------|
| All | 3 | 4 | 1 | 91 | 0 | 0 |
| Low Scorers | 7 | 12 | 4 | 76 | 0 | 0 |
| Middle Scorers | 3 | 3 | 0 | 94 | 0 | 0 |
| High Scorers | 0 | 0 | 0 | 99 | 0 | 0 |





| MC Item Option Discriminations | | | |
|--------------------------------|--------|--------|-------|
| A | B | C | D |
| -0.128 | -0.230 | -0.147 | 0.307 |



Notes:

Kyle cut a piece of string that measured $3\frac{1}{2}$ inches in length.

Which picture shows a piece of string $3\frac{1}{2}$ inches long?

- A. 
- B. 
- C. 
- D. 

Grade 4

Math

CID 3556084

Item # 43

Administration OP09

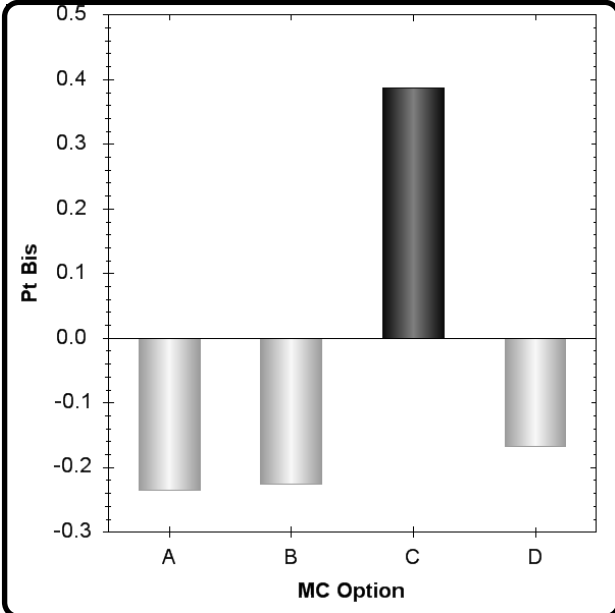
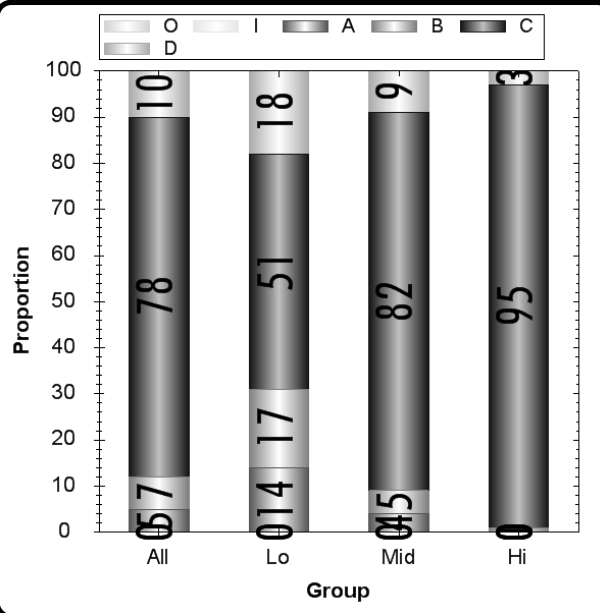
M1a

Type
Multiple ChoiceMax Points
1Correct Answer
CN Count
6517Item Mean
0.785Discrimination
0.387

| | A | B | C | D | Omit | Invalid |
|----------------|----|----|----|----|------|---------|
| All | 5 | 7 | 78 | 10 | 0 | 0 |
| Low Scorers | 14 | 17 | 51 | 18 | 0 | 0 |
| Middle Scorers | 4 | 5 | 82 | 9 | 0 | 0 |
| High Scorers | 0 | 1 | 95 | 3 | 0 | 0 |

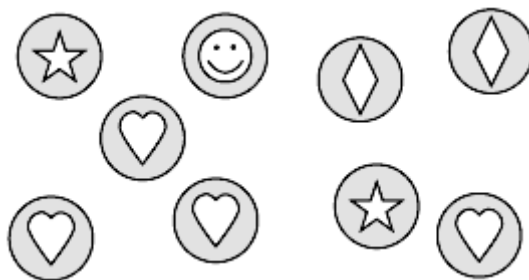
MC Item Option Discriminations

| A | B | C | D |
|--------|--------|-------|--------|
| -0.235 | -0.226 | 0.387 | -0.167 |



Notes:

Rachel has the stickers pictured below in a box.



Rachel takes one sticker from the box without looking. Which best describes the likelihood the sticker Rachel takes will have a star shape on it?

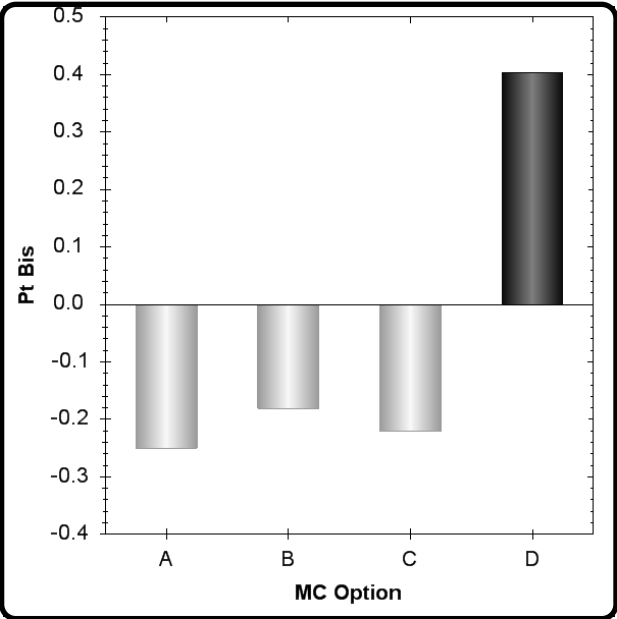
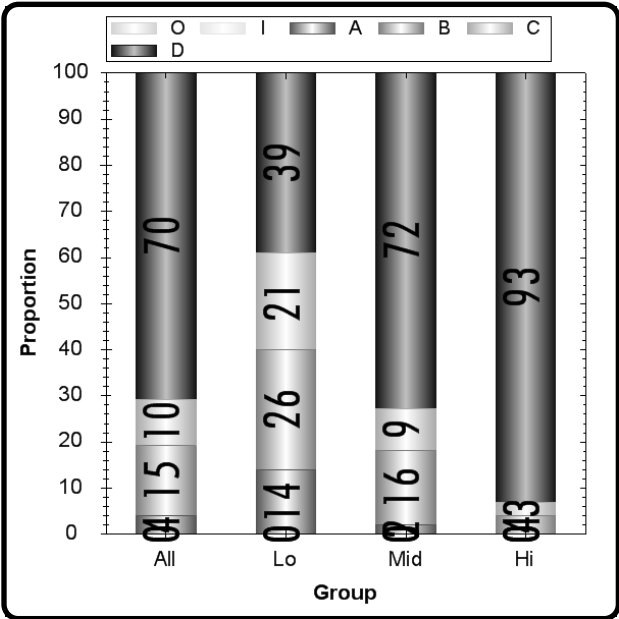
- A.** 1 out of 7
- B.** 2 out of 7
- C.** 1 out of 9
- D.** 2 out of 9

| | | |
|-----------|------|---------------------|
| Grade 4 | Math | CID 3416407 |
| Item # 57 | | Administration OP09 |
| | D2a | |

| | | | | | |
|-----------------|------------|----------------|---------|-----------|----------------|
| Type | Max Points | Correct Answer | N Count | Item Mean | Discrimination |
| Multiple Choice | 1 | D | 6517 | 0.700 | 0.404 |

| | A | B | C | D | Omit | Invalid |
|----------------|----|----|----|----|------|---------|
| All | 4 | 15 | 10 | 70 | 0 | 0 |
| Low Scorers | 14 | 26 | 21 | 39 | 0 | 0 |
| Middle Scorers | 2 | 16 | 9 | 72 | 0 | 0 |
| High Scorers | 0 | 4 | 3 | 93 | 0 | 0 |

| MC Item Option Discriminations | | | |
|--------------------------------|--------|--------|-------|
| A | B | C | D |
| -0.250 | -0.181 | -0.220 | 0.404 |



Notes:

White students may perform better on this item as compared to Am. Indian students. (B)

Mr. Dodd brought 6 movies for his children to watch while on a family trip. The table below shows the length of time for each of the 6 movies.

Family Trip Movies

| Movie | Length of Time (minutes) |
|--------------|-------------------------------------|
| 1 | 38 |
| 2 | 48 |
| 3 | 36 |
| 4 | 52 |
| 5 | 45 |
| 6 | 17 |

The children decide to watch Movie 3 and Movie 5. Will the length of time it takes to watch both movies be greater than or less than 1 hour? Write your answer in the space provided. Explain how you figured out your answer.

Greater Than or Less Than 1 Hour: _____

Grade 4

Item # 67

Math

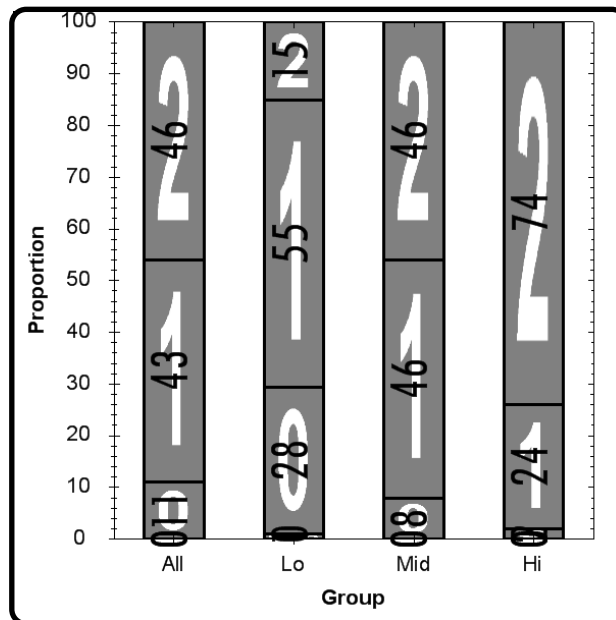
M1c

CID 3556393

Administration OP09

Type
Short AnswerMax Points
2N Count
6517Item Mean
1.350Discrimination
0.447

| | 0 | 1 | 2 | Omit | Invalid |
|----------------|----|----|----|------|---------|
| All | 11 | 43 | 46 | 0 | 0 |
| Low Scorers | 28 | 55 | 15 | 1 | 0 |
| Middle Scorers | 8 | 46 | 46 | 0 | 0 |
| High Scorers | 2 | 24 | 74 | 0 | 0 |



Notes:

Non LEP students may perform better on this item as compared to LEP students. (B)

