



**PAWS
Mathematics
Grade 3**

**Released Items
With Data**

2009

Copyright © **2010** by the Wyoming Department of Education.

All rights reserved. No part of this publication may be reproduced or transmitted in any form or by any means, electronic or mechanical, including photocopy, recording, or any information storage and retrieval system, without permission in writing from the Wyoming Department of Education.

Pearson and the *Pearson* logo are trademarks, in the U.S. and/or other countries, of Pearson Education, Inc. or its affiliate(s).

Portions of this work were previously published.

Printed in the United States of America.

The picture below shows the weights of the biggest pumpkins in a garden contest.



124 pounds



112 pounds



135 pounds



119 pounds

Which of the following lists the weights of the pumpkins in order from **LEAST** to **GREATEST**?

A.

119	112	135	124
-----	-----	-----	-----

C.

112	124	135	119
-----	-----	-----	-----

B.

112	119	124	135
-----	-----	-----	-----

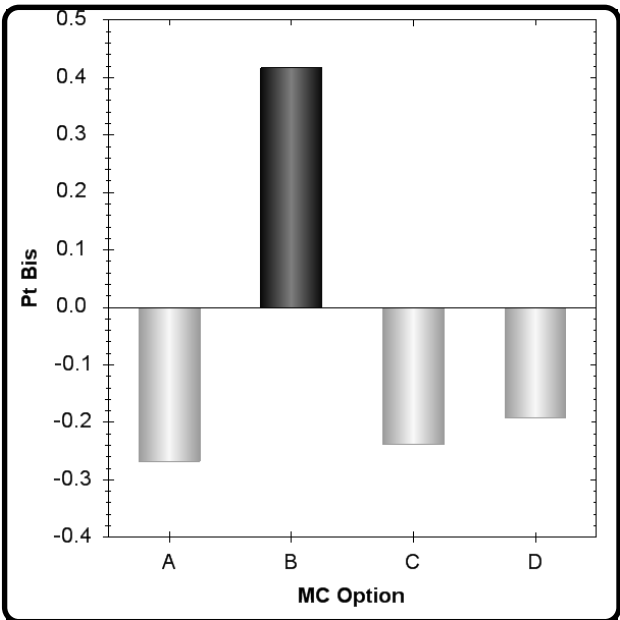
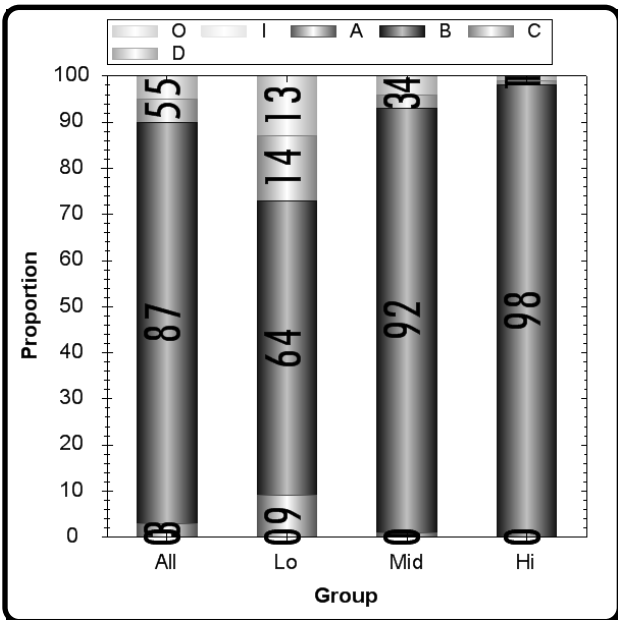
D.

119	112	124	135
-----	-----	-----	-----

Type	Max Points	Correct Answer	N Count	Item Mean	Discrimination
Multiple Choice	1	B	6560	0.873	0.417

	A	B	C	D	Omit	Invalid
All	3	87	5	5	0	0
Low Scorers	9	64	14	13	0	0
Middle Scorers	1	92	3	4	0	0
High Scorers	0	98	1	1	0	0

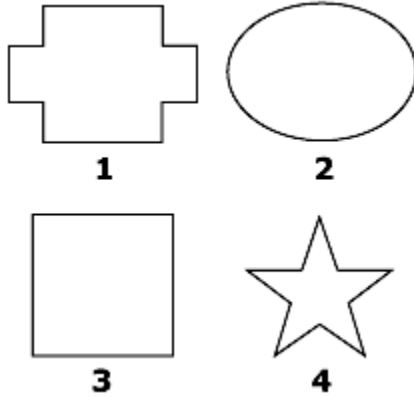
MC Item Option Discriminations			
A	B	C	D
-0.268	0.417	-0.238	-0.192



Notes:
 Non SPED students may perform better on this item as compared to SPED students. (B)

3508938

Marcy can only use the following shapes for a picture she is making. She needs 2 triangles to finish her picture.



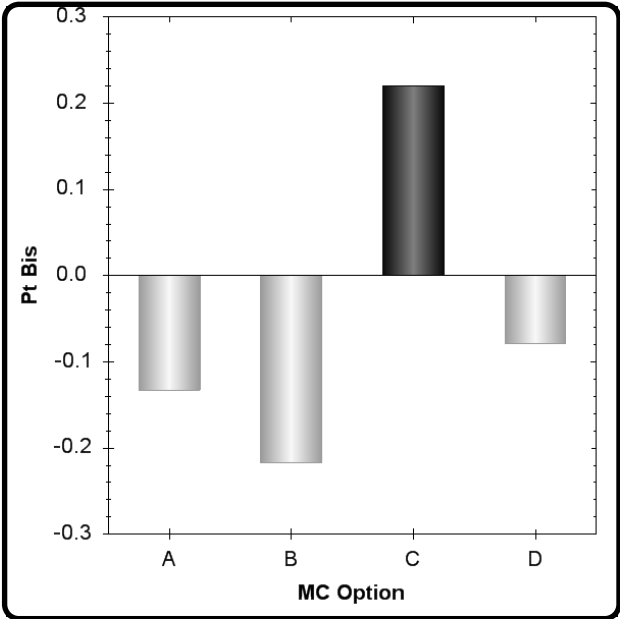
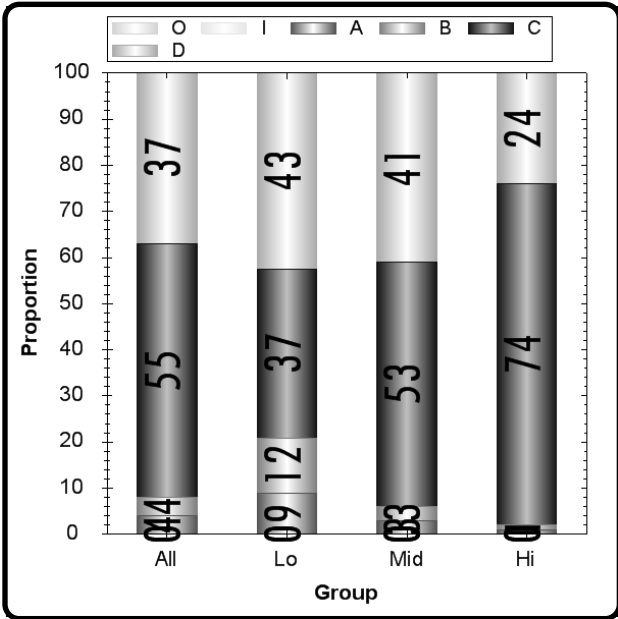
Which shape could Marcy cut one time to make only 2 triangles?

- A. 1**
- B. 2**
- C. 3**
- D. 4**

Type	Max Points	Correct Answer	N Count	Item Mean	Discrimination
Multiple Choice	1	C	6560	0.552	0.220

	A	B	C	D	Omit	Invalid
All	4	4	55	37	0	0
Low Scorers	9	12	37	43	0	0
Middle Scorers	3	3	53	41	0	0
High Scorers	1	1	74	24	0	0

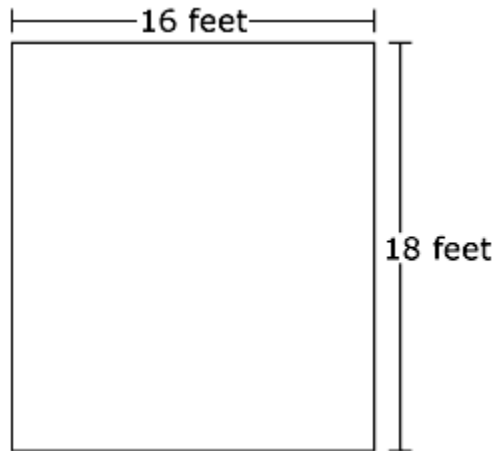
MC Item Option Discriminations			
A	B	C	D
-0.133	-0.217	0.220	-0.079



Notes:
 Low discrimination. Check item and key (if MC item) for ambiguity.

3508945

Sarah made a rectangular banner with the length and width measurements shown.



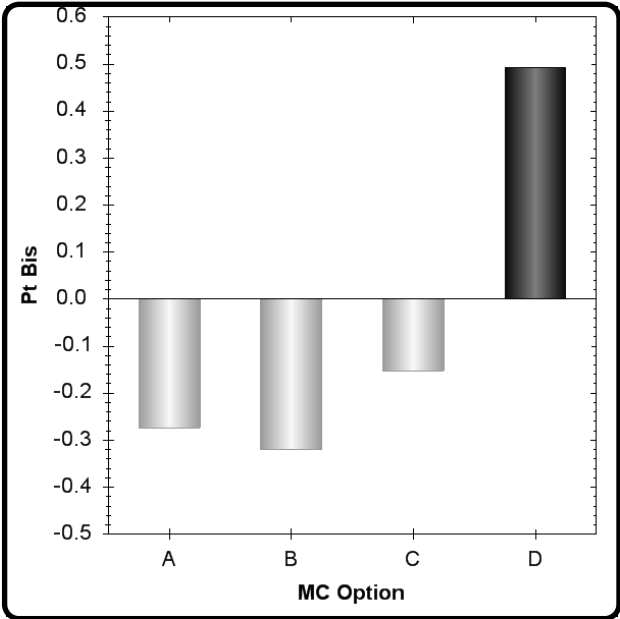
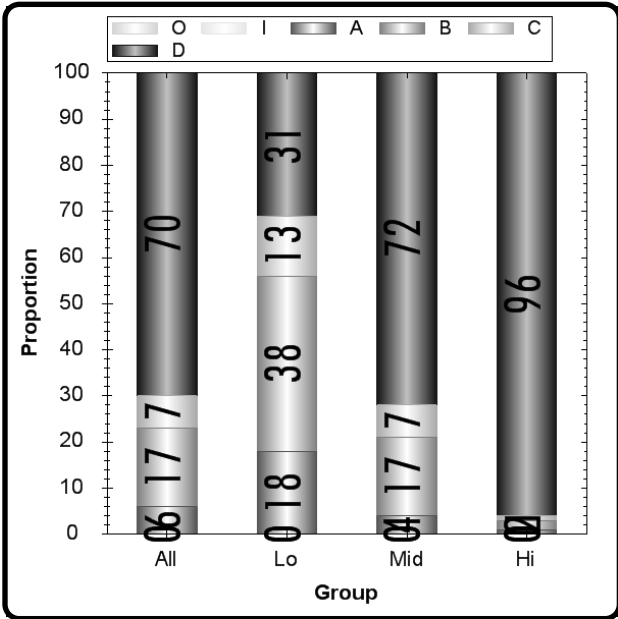
What is the perimeter of the banner?

- A.** 32 feet
- B.** 34 feet
- C.** 52 feet
- D.** 68 feet

Type	Max Points	Correct Answer	N Count	Item Mean	Discrimination
Multiple Choice	1	D	6560	0.695	0.493

	A	B	C	D	Omit	Invalid
All	6	17	7	70	0	0
Low Scorers	18	38	13	31	0	0
Middle Scorers	4	17	7	72	0	0
High Scorers	1	2	1	96	0	0

MC Item Option Discriminations			
A	B	C	D
-0.274	-0.320	-0.152	0.493



Notes:

3484051

Harold has a bag containing four cards of equal size and shape. Each card is labeled with one of the following towns.

Cheyenne, Laramie, Jackson, Douglas

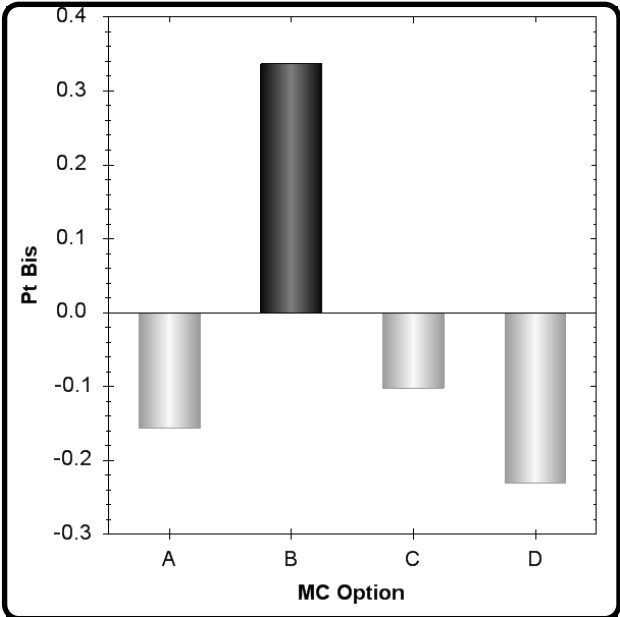
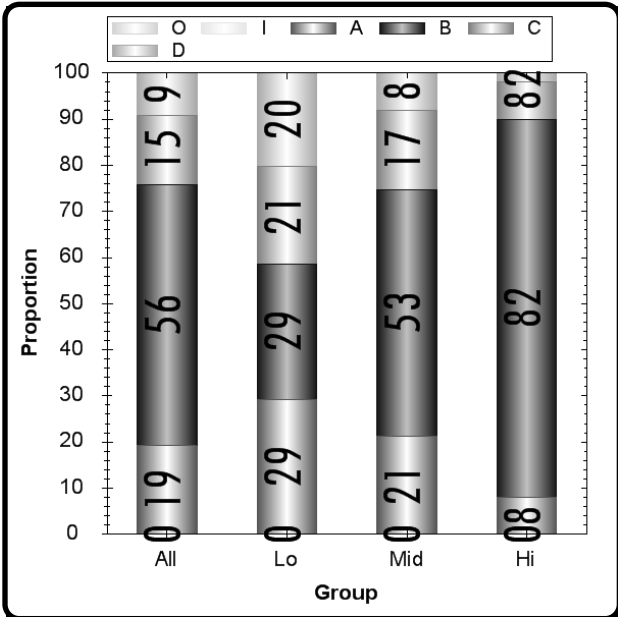
If Harold chooses one card from the bag without looking, what is the likelihood that the card is labeled "Laramie"?

- A.** 1 out of 3
- B.** 1 out of 4
- C.** 2 out of 4
- D.** 3 out of 4

Type	Max Points	Correct Answer	N Count	Item Mean	Discrimination
Multiple Choice	1	B	6560	0.560	0.337

	A	B	C	D	Omit	Invalid
All	19	56	15	9	0	0
Low Scorers	29	29	21	20	0	0
Middle Scorers	21	53	17	8	0	0
High Scorers	8	82	8	2	0	0




MC Item Option Discriminations			
A	B	C	D
-0.157	0.337	-0.102	-0.231



Notes:

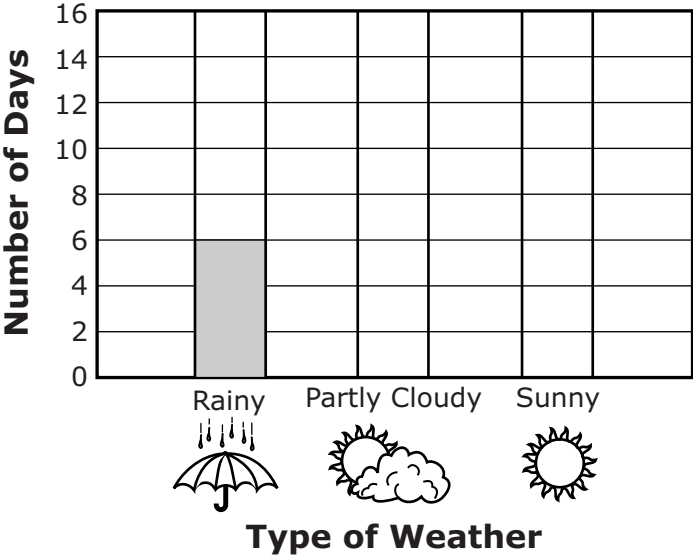
The students in Ms. Keith’s class used a tally chart to record the weather each day in September. A picture of their tally chart is shown.

SEPTEMBER WEATHER

Type of Weather	Number of Days
Rainy 	
Partly Cloudy 	
Sunny 	

Part A. Use data from the tally chart to correctly complete the bar graph provided.

SEPTEMBER WEATHER



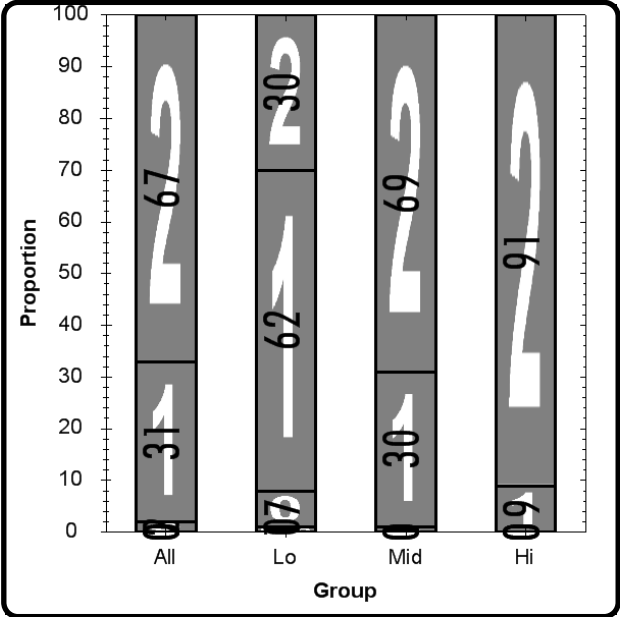
Part B. How many more days was the weather in September partly cloudy than it was sunny? Write your answer in the space provided. Show or explain how you figured out your answer.

How Many More Partly Cloudy Days: _____

Grade 3 Math CID 3337552
 Item # 61 Administration OP09
 D1a

Type Max Points N Count Item Mean Discrimination
 Short Answer 2 6560 1.643 0.486

	0	1	2	Omit	Invalid
All	2	31	67	0	0
Low Scorers	7	62	30	1	0
Middle Scorers	1	30	69	0	0
High Scorers	0	9	91	0	0



Notes:

