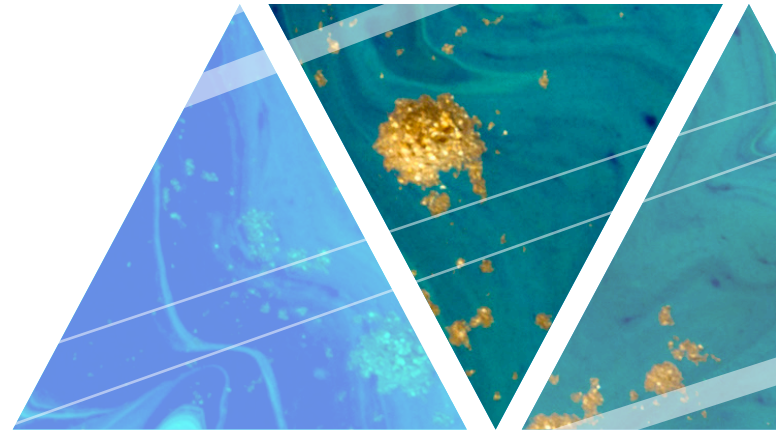


# ESSA in Wyoming

## FACT SHEET



Wyoming’s Consolidated State Plan for the Every Student Succeeds Act allows us to continue creating opportunities for students to keep Wyoming strong by ensuring they are ready for college, career, or the military. It is built on Wyoming’s strengths and designed to have a school accountability system which supports schools, while meeting federal and state requirements.

### Long-Term Goals for Schools

- The long-term goals are based on schools that performed among the 65th percentile of all public schools in Wyoming. In the 2015-16 school year, the top 35% of schools had a graduation rate of at least 88%. The goal is for all schools to perform at the same level within 15 years.
- The long-term goals for reading and math are also based on schools that performed among the 65th percentile in 2015-16, but these goals will be revisited once baseline data is available from the new statewide assessment, Wyoming Test of Proficiency and Progress (WY-TOPP), which will be given for the first time in the 2017-18 school year. The current goals were set using PAWS results for Grades 3-8 and ACT results for Grade 11.
- Stakeholder consultation will continue through the Advisory Committee, which developed the method for setting goals.

### Weighting Table: Accountability Measures

	<b>ACADEMIC INDICATORS</b>	<b>SCHOOL QUALITY/STUDENT SUCCESS INDICATORS</b>
Elementary & Middle Schools	<ul style="list-style-type: none"> <li>• Achievement on WY-TOPP (25%)</li> <li>• Growth on WY-TOPP (25%)</li> <li>• English Language Proficiency (25%)</li> </ul>	<ul style="list-style-type: none"> <li>• Equity (25%)</li> </ul>
High Schools	<ul style="list-style-type: none"> <li>• Achievement on WY-TOPP (20%)</li> <li>• Growth on WY-TOPP (20%)</li> <li>• 4-year, on-time Graduation Rate (20%)</li> <li>• English Language Proficiency (20%)</li> </ul>	<ul style="list-style-type: none"> <li>• Post-Secondary Readiness (using college, career, and military readiness measures) (20%)</li> </ul>

## Support for Schools

Schools with a graduation rate below 67% or the bottom 5% of Title I schools will be identified for Comprehensive Support and Improvement. They will participate in state-led supports such as data reviews, assessment literacy training, professional learning communities, and implementation of Multi-Tiered System of Support.

Schools with a group of students performing in the bottom 10% will be identified for Targeted Support and Improvement. These schools will participate in supports and interventions determined by the local schools and districts.

## Support for Educators

Wyoming's vision of excellent educators and school leaders includes:

- Make each student their priority, focus on high expectations for all, acquire deep content knowledge, and pair these with evidence-based instructional practices
- Provide supports necessary to meet every student where they are and help them grow academically and emotionally
- Create cultures of trust and a climate of learning
- Are accountable, professional, solution-oriented role models who contribute to collective efficacy throughout the educational system
- Build and collaborate in highly effective teams and networks

Stakeholder consultation will continue through a statewide needs assessment survey distributed to all Wyoming school districts and relative stakeholders. This needs assessment will be used to determine state-coordinated professional development activities.

## Support for Students

- Promote strategies that foster safe, positive, healthy, culturally competent, and inclusive learning environments and address students' varied needs in order to improve educational outcomes for all students
- Utilize a Multi-Tiered System of Support to ensure every student receives evidence-based academic and behavioral support
- Support English learners in achieving high levels in academic subject areas by assisting teachers and other school officials with the development, implementation, and sustainment of effective language instruction educational programs
- Train and support school staff to ensure homeless students have access to school and activities, as well as assistance with school records, supplies and transportation
- Assist students who have had contact with the juvenile justice system by maintaining academic support and facilitating transitions